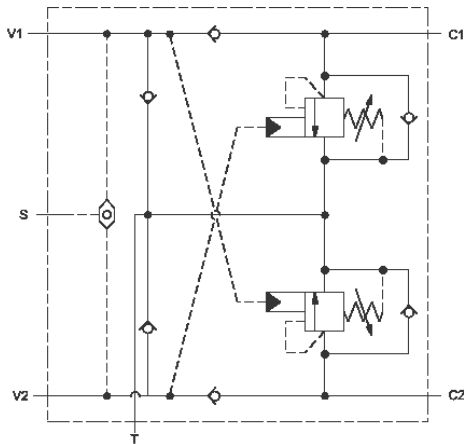




sunhydraulics.com/model/YCGR

This valve assembly provides overrunning load-control, load-port relief protection, supplies make-up oil, and flushes hot dirty oil out of the actuator and includes a load sense shuttle for brake release. All oil coming out of the actuator returns to tank through port T.



TECHNICAL DATA

NOTE:

Body Type	Line mount	DATA MAY VARY BY
Capacity	60 gpm	
Mounting Hole Diameter	.53 in.	
Mounting Hole Depth	Through	
Mounting Hole Quantity	2	

CONFIGURATION

- NOTES:**
- Important:** Carefully consider the maximum system pressure. The pressure rating of the manifold is dependent on the manifold material, with the port type/size a Functional Setting Range consideration. Manifolds constructed of aluminum are not rated for pressures higher than 3000 psi (210 bar), regardless of the port type/size specified.
 - Seal Material For detailed information regarding the cartridges contained in this assembly, click on the models codes shown in the Included Components tab.
 - Pilot Ratio (4th Letter) of Primary Cartridge
 - Port and Material Designation

CONFIGURATION. SEE CONFIGURATION SECTION.

OPTION SELECTION EXAMPLE: YCGRHMAN

CONTROL	(L)	FUNCTIONAL SETTING RANGE	(I)	SEAL MATERIAL	(V)
L	Standard Screw Adjustment	I 400 - 1500 psi w/25 psi Check (28 - 105 bar w/ 1,7 bar Check), 1000 psi (70 bar) Standard Setting A 1000 - 4000 psi w/4 psi Check (70 - 280 bar w/ 0,3 bar Check), 3000 psi (210 bar) Standard Setting B 400 - 1500 psi w/4 psi Check (28 - 105 bar w/ 0,3 bar Check), 1000 psi (70 bar) Standard Setting H 1000 - 4000 psi w/25 psi Check (70 - 280 bar w/ 1,7 bar Check), 3000 psi (210 bar) Standard Setting	V	Viton	
C	Tamper Resistant - Factory Set		N	Buna-N	

PRIMARY CARTRIDGE	(A)
A	3:1 (with CBGA primary cartridge, 3:1 pilot ratio, standard capacity counterbalance valve)
H	10:1 (with CBGH primary cartridge, 10:1 pilot ratio, standard capacity counterbalance valve)
G	4.5:1 (with CBGG primary cartridge, 4.5:1 pilot ratio, standard capacity counterbalance valve)