

This assembly will automatically discharge an accumulator through a 0.125 inch orifice whenever the pump is shut off. Whenever the pump is started, the pilot-to-close check valve closes, blocking the discharge path back to tank. The standard check valve prevents oil in the accumulator from back-flowing through the pump.

**TECHNICAL DATA** NOTE: DATA MAY VARY BY CONFIGURATION. SEE CONFIGURATION SECTION.

Body Type	Line mount
Capacity	80 gpm
Mounting Hole Quantity	2

- NOTES:**
- 1" Code 61 Flange Mounting Hole Data: Inch: 3/8-16 UNC x .88 (22,2 mm) DP, Metric: M10 x 1.5-6H x .88 (22,2 mm) DP
  - **Important:** Carefully consider the maximum system pressure. The pressure rating of the manifold is dependent on the manifold material, with the port type/size a secondary consideration. Manifolds constructed of aluminum are not rated for pressures higher than 3000 psi (210 bar), regardless of the port type/size specified.
  - For detailed information regarding the cartridges contained in this assembly, click on the models codes shown in the Included Components tab.

**OPTION SELECTION EXAMPLE: YCHEXCNAV**

CONTROL	(X) CRACKING PRESSURE	(C) SEAL MATERIAL	(N)
<b>X</b> Standard Pilot	<b>C</b> 30 psi (2 bar)	<b>N</b> Buna-N	
	A 4 psi (0,3 bar)	V Viton	
	B 15 psi (1 bar)		
	D 50 psi (3,5 bar)		
	E 75 psi (5 bar)		
	F 100 psi (7 bar)		

**PRIMARY CARTRIDGE** (A)

<b>A</b> A (with CODA primary cartridge, Pilot-to-close check valve)
--

**INCLUDED COMPONENTS**

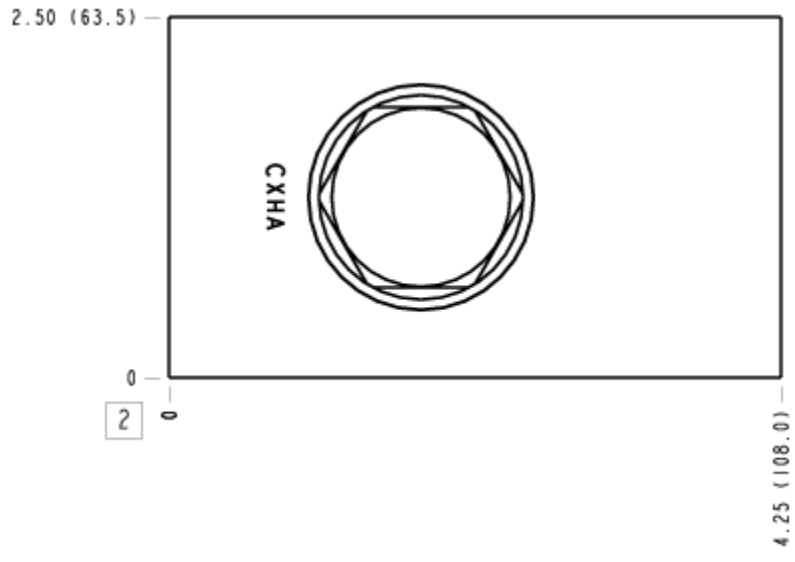
Part	Description	Quantity
CODAXCN	Cartridge - Primary	1
CXHAXCN	Cartridge	1

**MANIFOLD FACES**

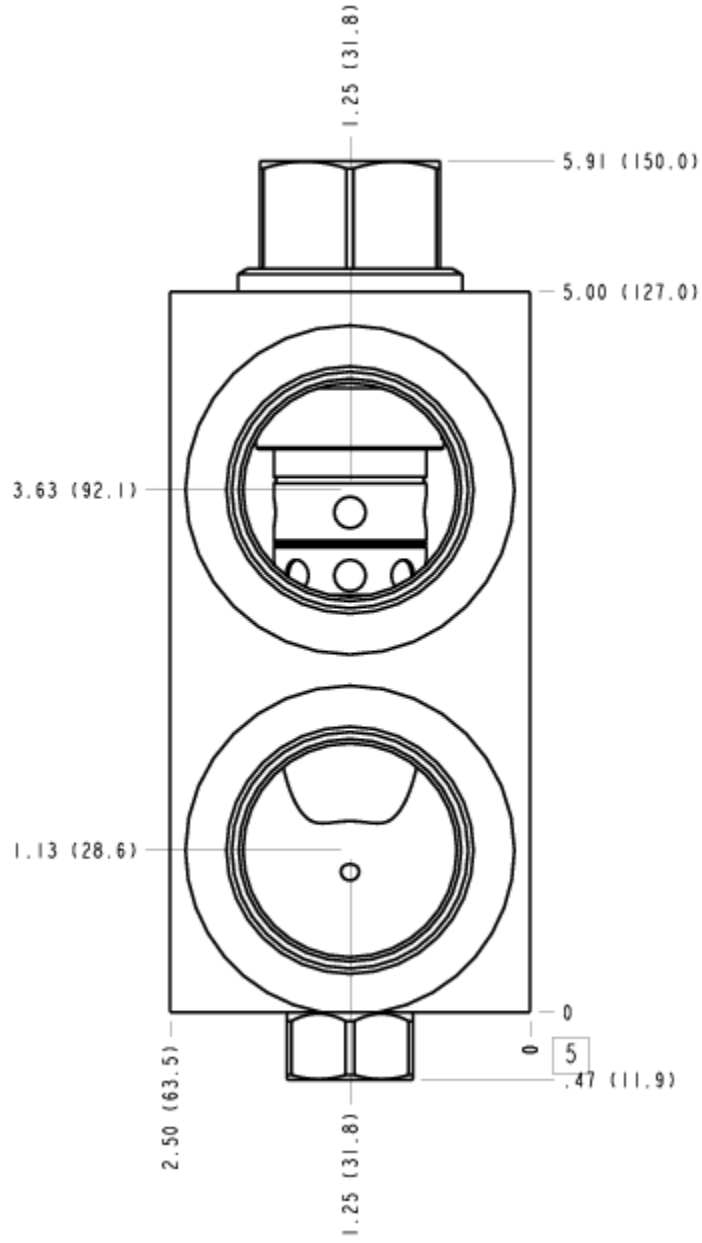
**FACE GRID**

1	2	3	4
5	6	7	8
9	10	11	12

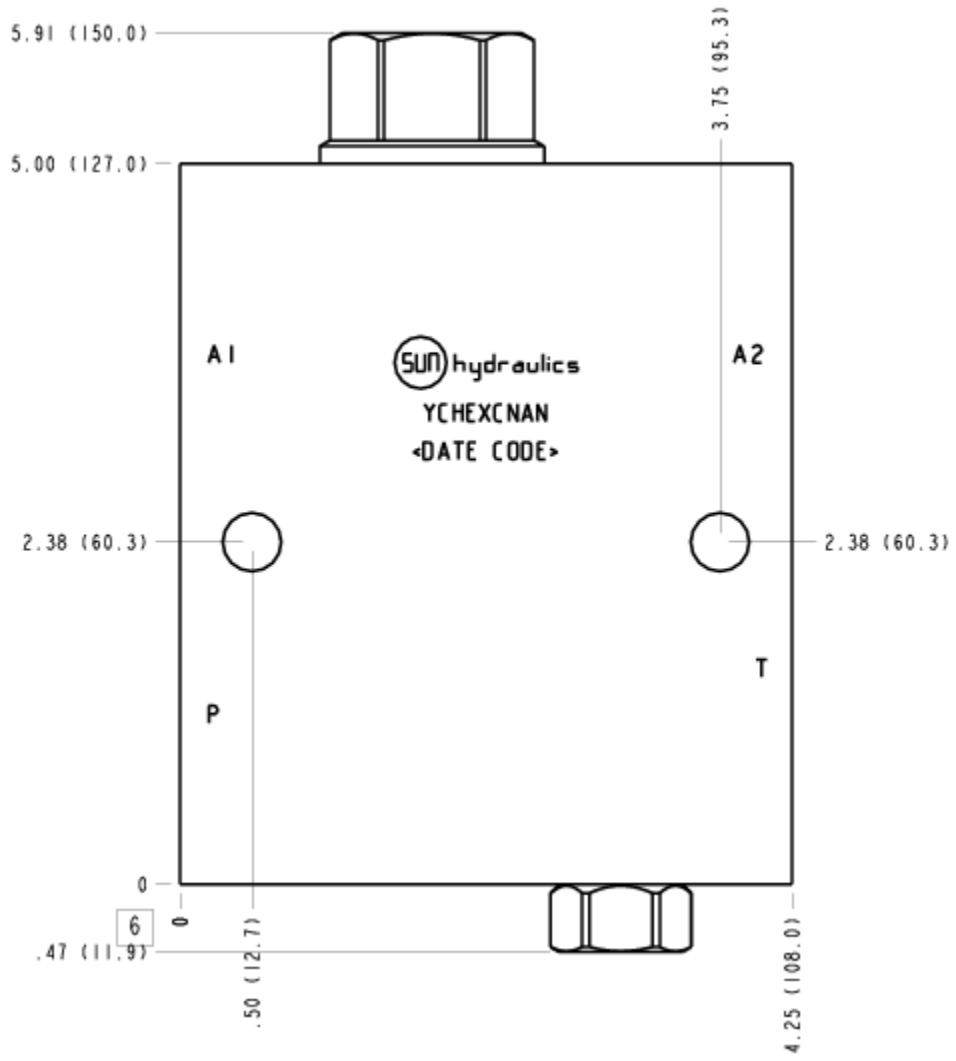
FACE 2



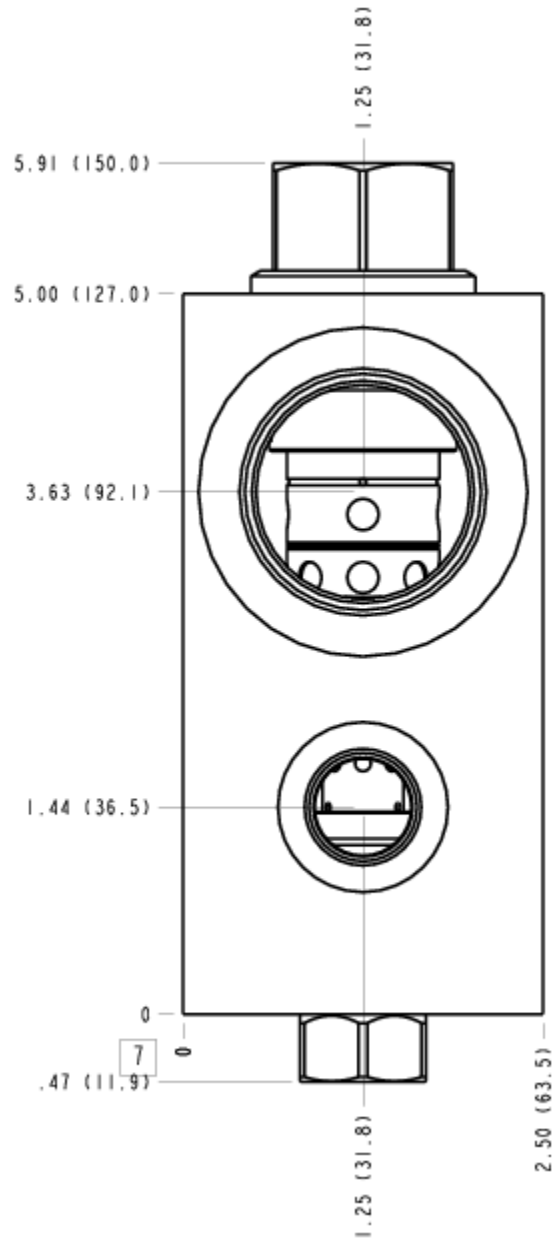
FACE 5



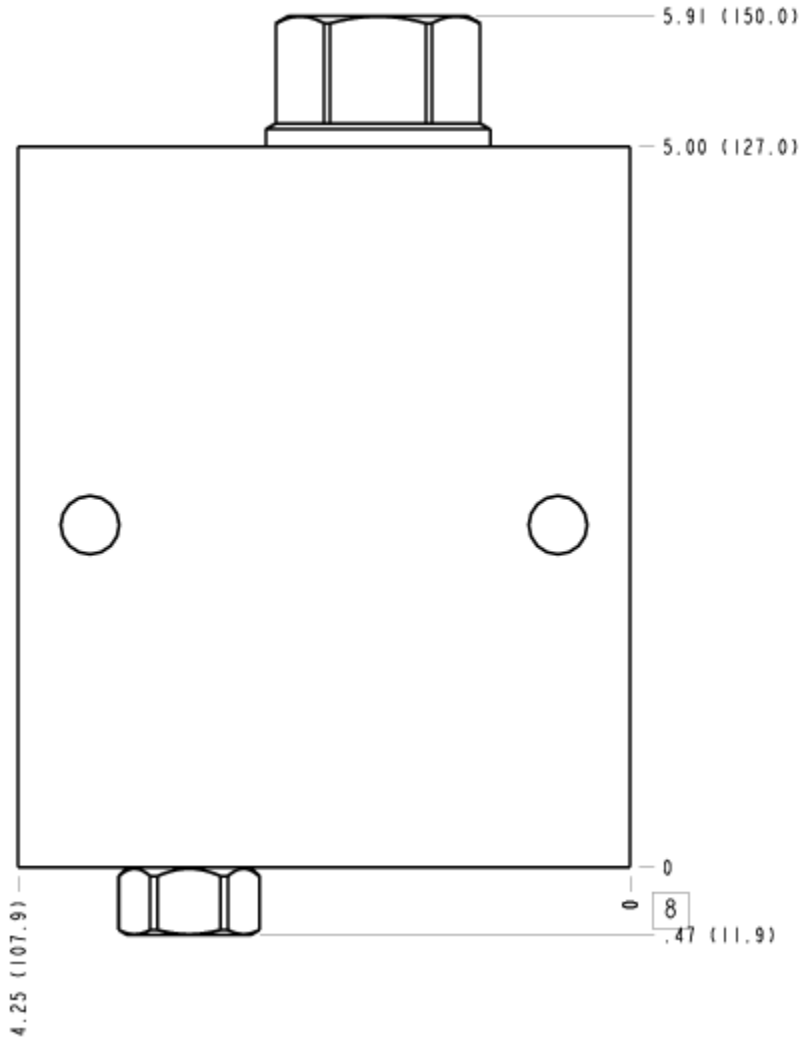
# FACE 6



FACE 7



FACE 8



FACE 10

