

### TECHNICAL DATA

Body Type	Line mount
Capacity	320 L/min.
Mounting Hole Quantity	2

**OPTION SELECTION EXAMPLE: YCHEXCNAN**

CONTROL	(X) CRACKING PRESSURE	(C) SEAL MATERIAL	(N)
<b>X</b> piloto estándar	<b>C</b> 30 psi (2 bar)	<b>N</b> Buna-N	
	<b>D</b> 50 psi (3,5 bar)	<b>V</b> Viton	
	<b>E</b> 75 psi (5 bar)		
	<b>F</b> 100 psi (7 bar)		

**PRIMARY CARTRIDGE (A)**

<b>A</b> A (with CODA primary cartridge, Pilotaje para cerrar anti-retorno válvula )
--

**INCLUDED COMPONENTS**

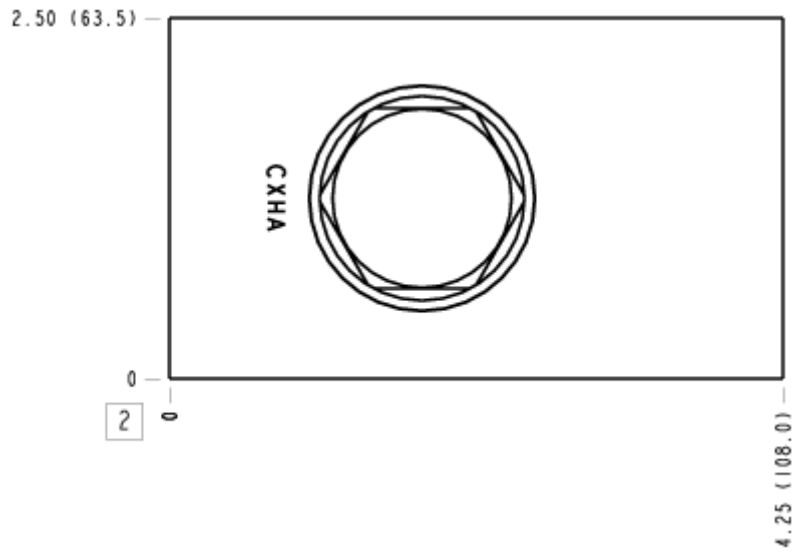
Part	Description	Quantity
CODAXCN	Cartridge - Primary	1
CXHAXCN	Cartridge	1

**MANIFOLD FACES**

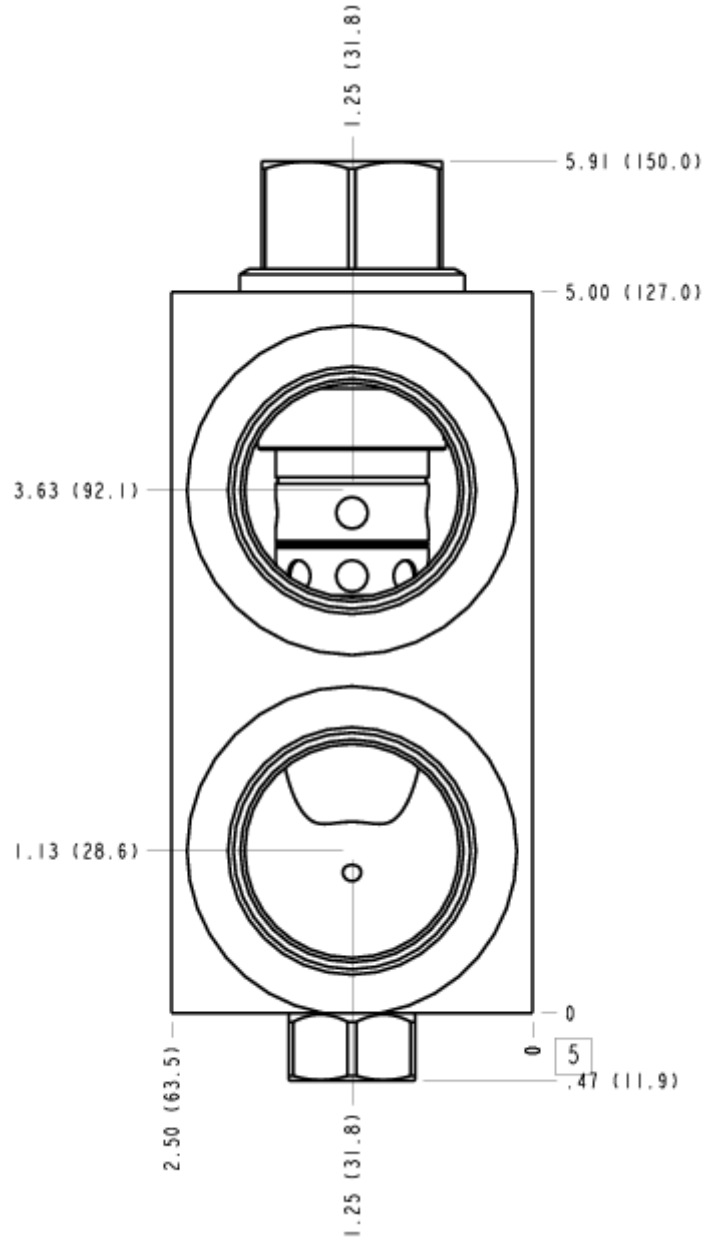
**FACE GRID**

1	2	3	4
5	6	7	8
9	10	11	12

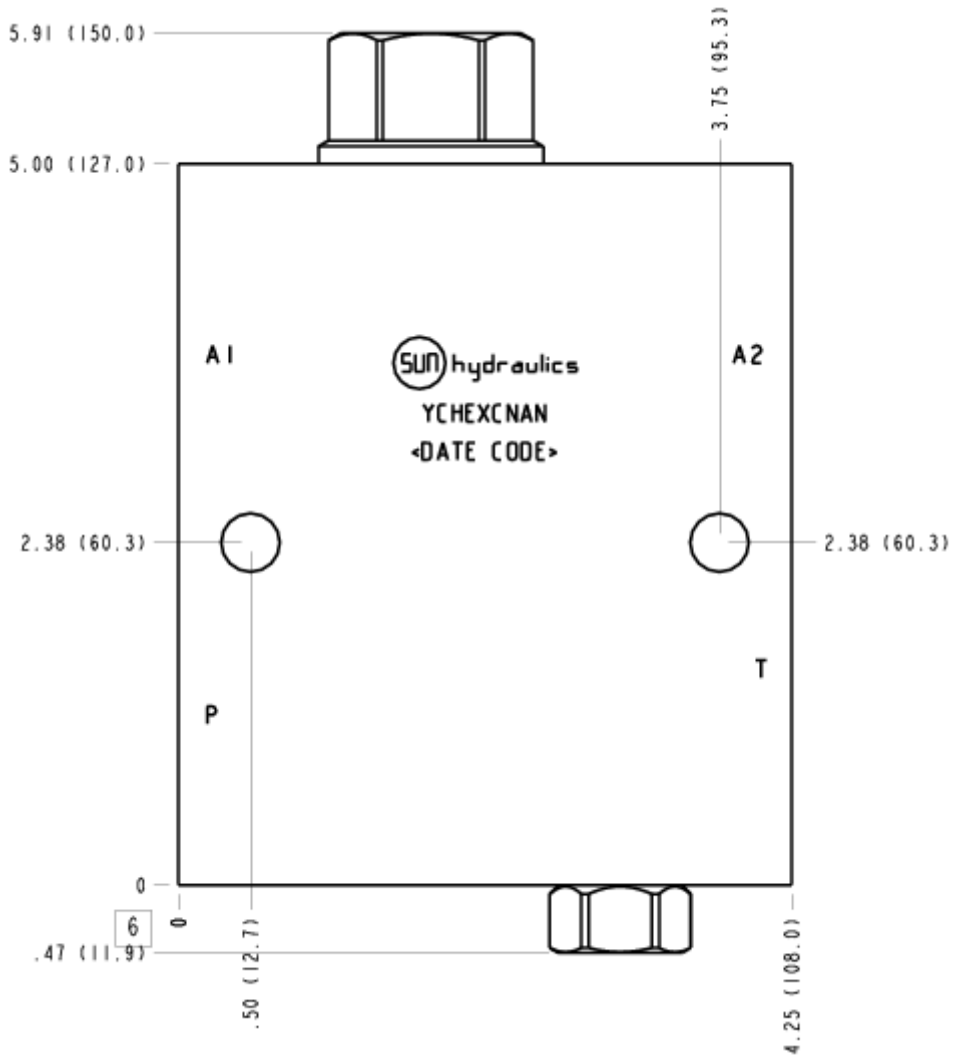
FACE 2



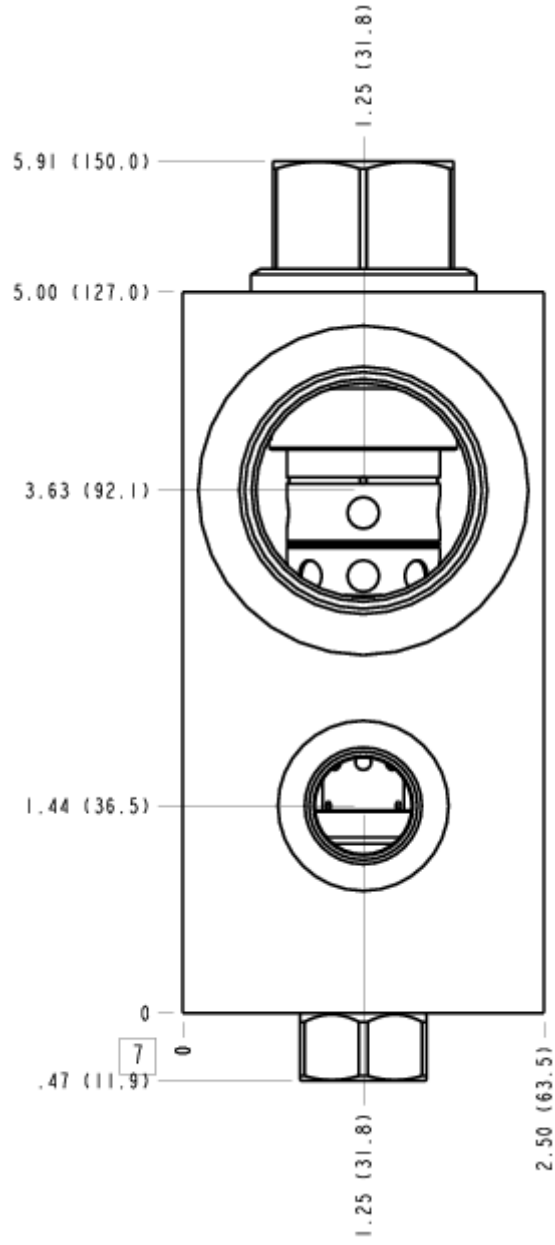
# FACE 5



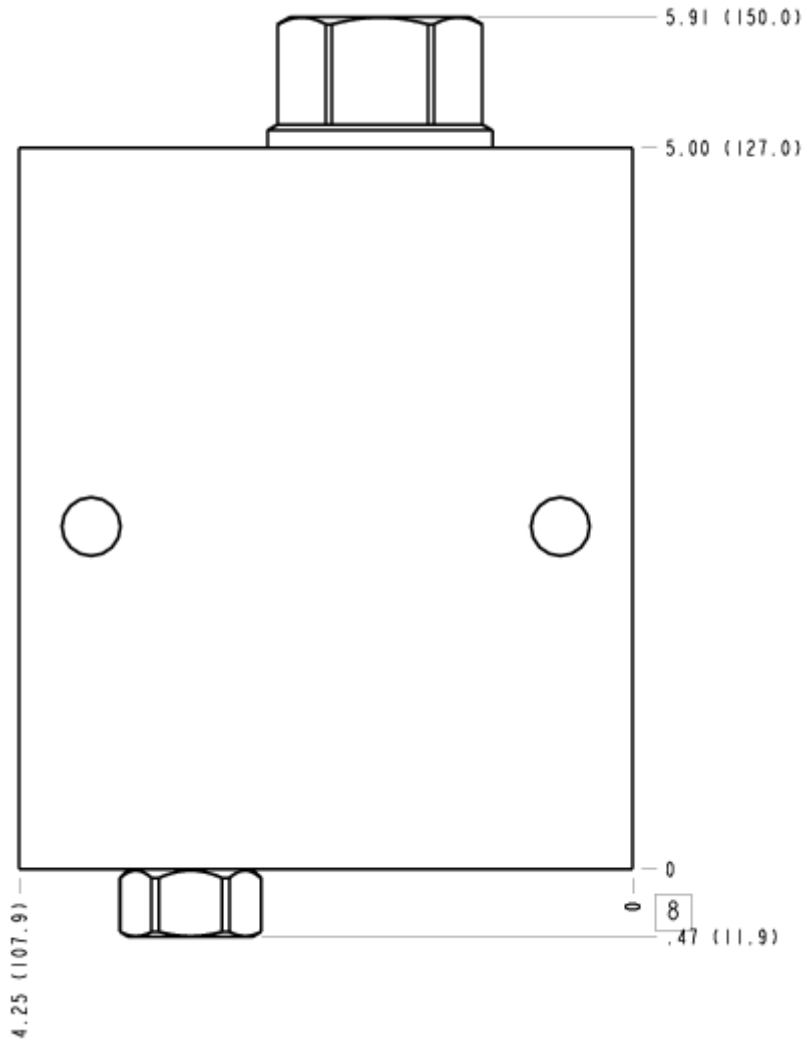
FACE 6



FACE 7



FACE 8



FACE 10

