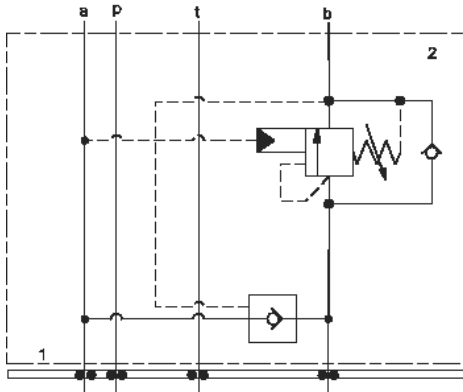
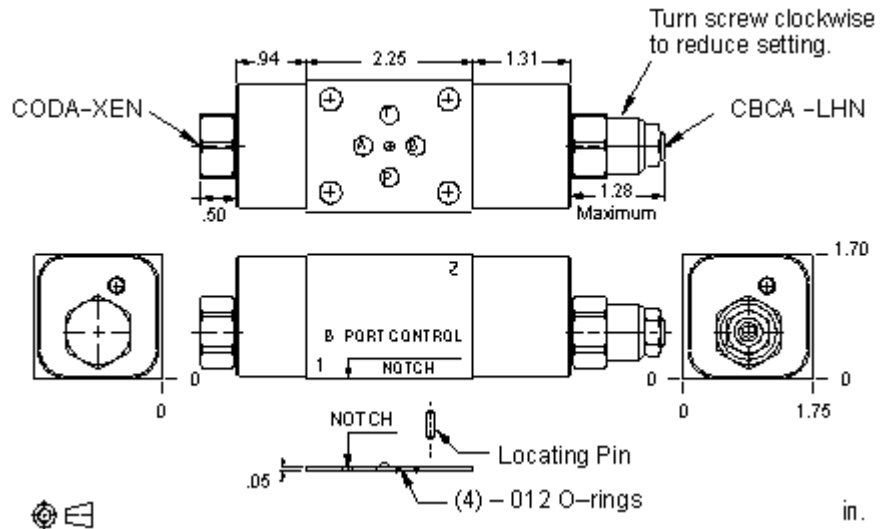


A to B



B to A



TECHNICAL DATA NOTE: DATA MAY VARY BY CONFIGURATION. SEE CONFIGURATION SECTION.

Body Type	apilables
Interface	ISO 03
Body Features	A to B or B to A
Seal Plate Included (see notes)	Yes
Stack Height	44,5 mm

CONFIGURATION OPTIONS

Model Code Example: YDCALHNAA

CONTROL	(L)	FUNCTIONAL SETTING RANGE	(H)	SEAL MATERIAL	(N)
L				N	Buna-N
	Standard Screw Adjustment			V	Viton
C			H		
	Tamper Resistant - Factory Set				
		1000 - 4000 psi w/25 psi Check (70 - 280 bar w/ 1,7 bar Check), 3000 psi (210 bar) Standard Setting			
		A			
		1000 - 4000 psi w/4 psi Check (70 - 280 bar w/ 0,3 bar Check), 3000 psi (210 bar) Standard Setting			
		B			
		400 - 1500 psi w/4 psi Check (28 - 105 bar w/ 0,3 bar Check), 1000 psi (70 bar) Standard Setting			

PRIMARY CARTRIDGE

(A)

A	A (with CBCA primary cartridge, Proporción de pilotaje 3:1 , capacidad estándar contrabalance válvula)
A	A (with CBCAX primary cartridge, Ajuste fijo, proporción de pilotaje 3:1 , capacidad estándar contrabalance válvula)

INCLUDED COMPONENTS

Part	Description	Quantity
500-001-012*	O-Ring	4
700-002*	Seal Plate	1
811-001-006*	Pin	1
850-004-218*	Plug	2
CBCALHN	Cartridge - Primary	1
CODAXEN	Cartridge	1