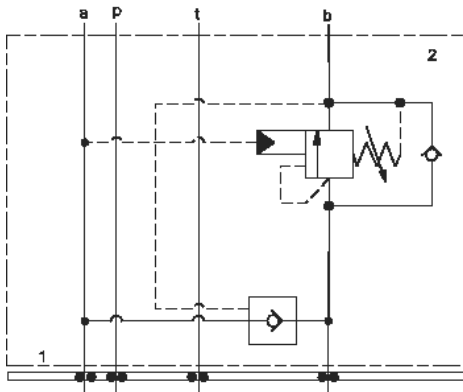
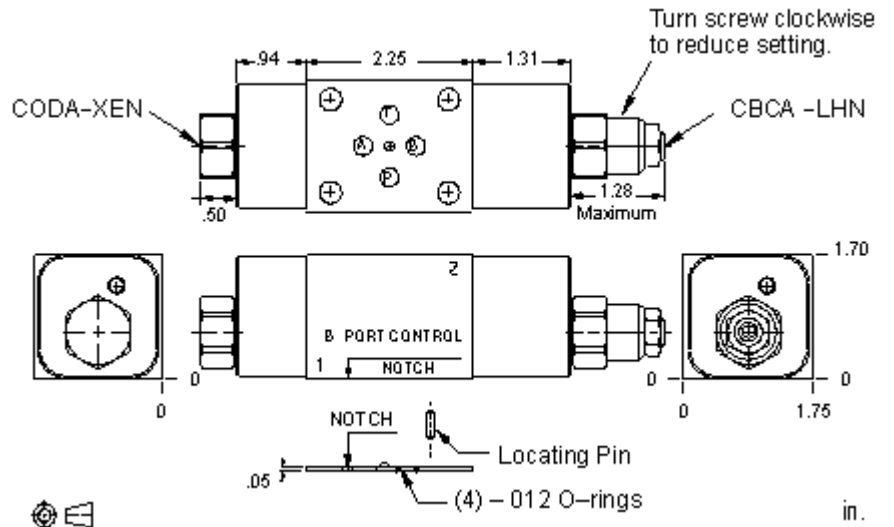


A to B



B to A



TECHNICAL DATA NOTE: DATA MAY VARY BY CONFIGURATION. SEE CONFIGURATION SECTION.

| | |
|---------------------------------|------------------|
| Body Type | apilables |
| Interface | ISO 03 |
| Capacity | 40 L/min. |
| Body Features | A to B or B to A |
| Seal Plate Included (see notes) | Yes |
| Stack Height | 44,5 mm |

OPTION SELECTION EXAMPLE: YDCALHNA

| CONTROL | (L) FUNCTIONAL SETTING RANGE | (H) SEAL MATERIAL | (N) |
|------------------------------------|--|-------------------|-----|
| L Standard Screw Adjustment | H 1000 - 4000 psi w/25 psi Check (70 - 280 bar w/ 1,7 bar Check), 3000 psi (210 bar) Standard Setting | N Buna-N | |
| | A 1000 - 4000 psi w/4 psi Check (70 - 280 bar w/ 0,3 bar Check), 3000 psi (210 bar) Standard Setting | V Viton | |
| | B 400 - 1500 psi w/4 psi Check (28 - 105 bar w/ 0,3 bar Check), 1000 psi (70 bar) Standard Setting | | |
| | I 400 - 1500 psi w/25 psi Check (28 - 105 bar w/ 1,7 bar Check), 1000 psi (70 bar) Standard Setting | | |

PRIMARY CARTRIDGE (A)

| | |
|----------|---|
| A | A (with CBCA primary cartridge, Proporción de pilotaje 3:1 , capacidad estándar contrabalance válvula) |
| A | A (with CBCAX primary cartridge, Ajuste fijo, proporción de pilotaje 3:1 , capacidad estándar contrabalance válvula) |

INCLUDED COMPONENTS

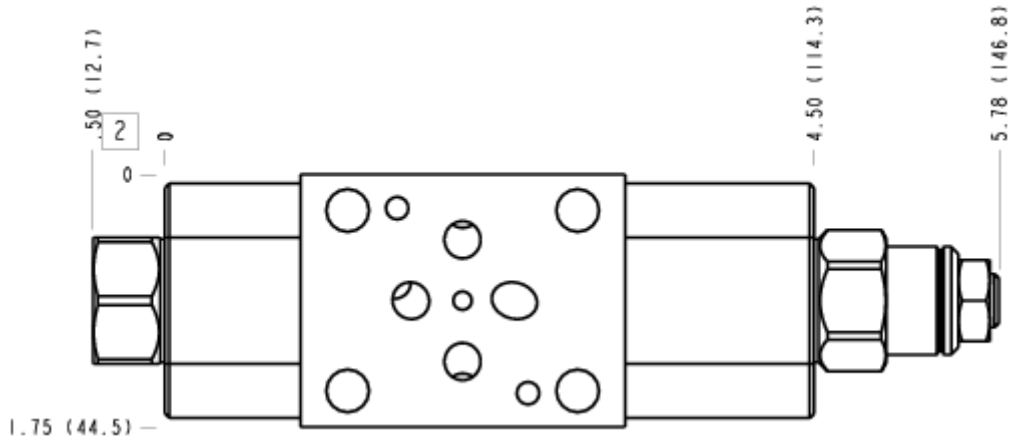
| Part | Description | Quantity |
|--------------|---------------------|----------|
| 500-001-012* | O-Ring | 4 |
| 700-002* | Seal Plate | 1 |
| 811-001-006* | Pin | 1 |
| 850-004-218* | Plug | 2 |
| CBCALHN | Cartridge - Primary | 1 |
| CODAXEN | Cartridge | 1 |

MANIFOLD FACES

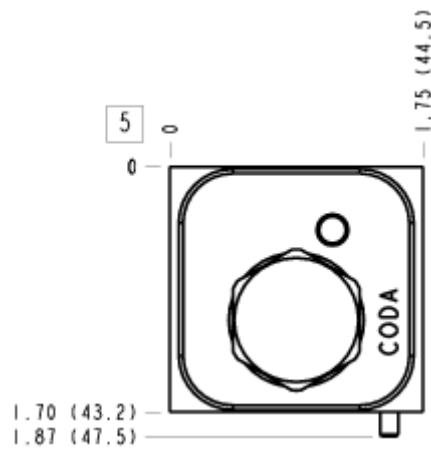
FACE GRID

| | | | |
|---|----|----|----|
| 1 | 2 | 3 | 4 |
| 5 | 6 | 7 | 8 |
| 9 | 10 | 11 | 12 |

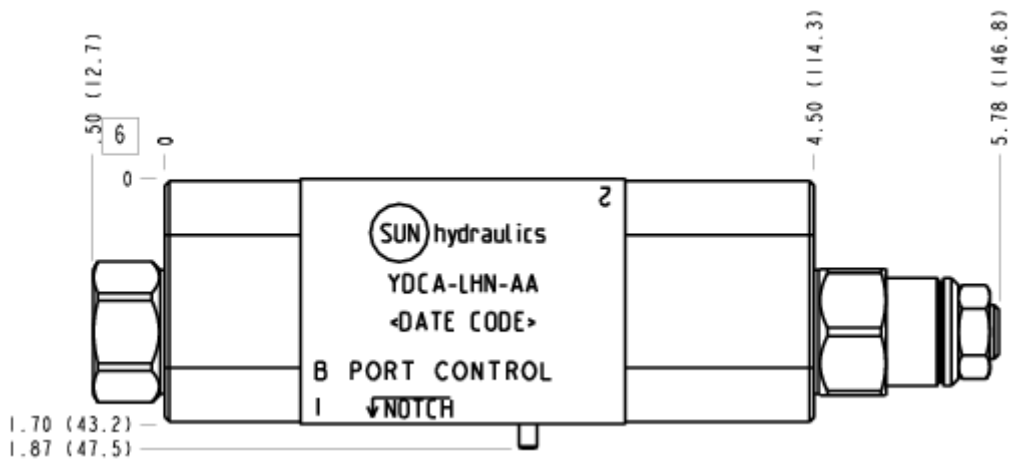
FACE 2



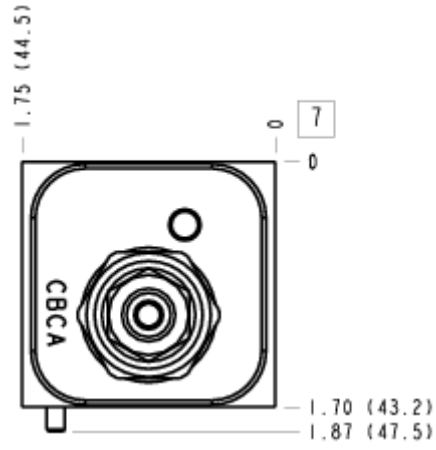
FACE 5



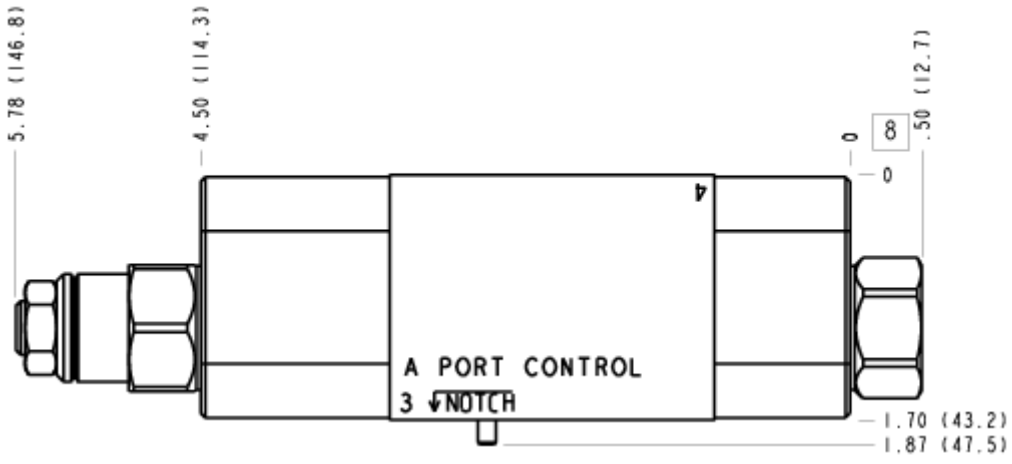
FACE 6



FACE 7



FACE 8



FACE 10

