

TECHNICAL DATA

Body Type	Sandwich
Interface	ISO 03
Capacity	40 L/min.
Body Features	B to P
Seal Plate Included (see notes)	Yes
Stack Height	44,5 mm
Mounting Hole Diameter	5,2 mm
Mounting Hole Depth	Through
Mounting Hole Quantity	4

OPTION SELECTION EXAMPLE: YDCKXCNA

CONTROL	(X) CRACKING PRESSURE	(C) SEAL MATERIAL	(N)
X Not Adjustable	C 30 psi (2 bar)	N Buna-N	
	D 50 psi (3,5 bar)	V Viton	
	E 75 psi (5 bar)		
	F 100 psi (7 bar)		

PRIMARY CARTRIDGE (A)

A A (with CXDA primary cartridge, Caudal libre de nariz al lado anti-retorno válvula)

INCLUDED COMPONENTS

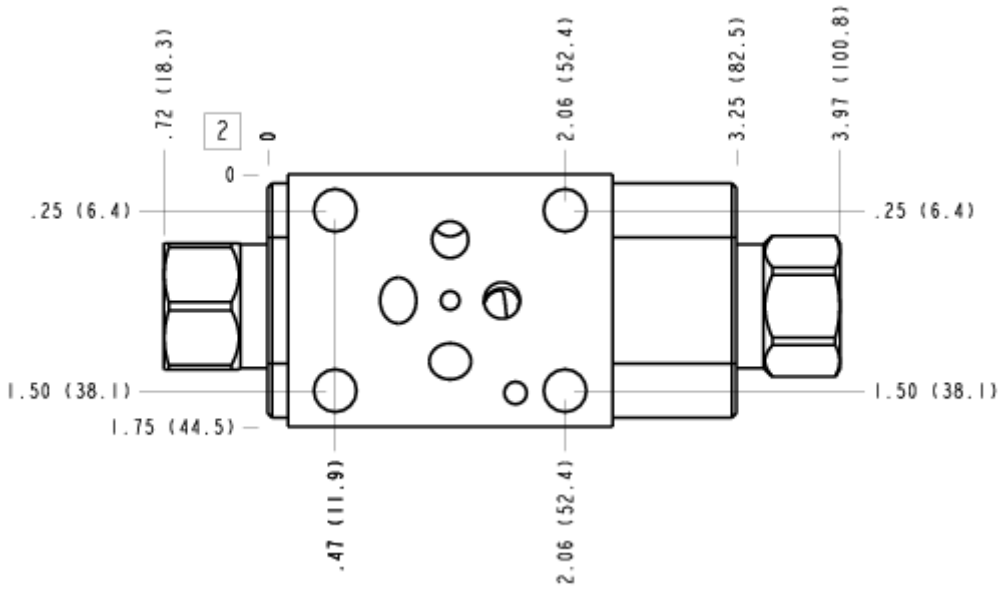
Part	Description	Quantity
500-001-012*	O-Ring	4
700-002*	Seal Plate	1
811-001-006*	Pin	1
CXDAXCN	Cartridge - Primary	2

MANIFOLD FACES

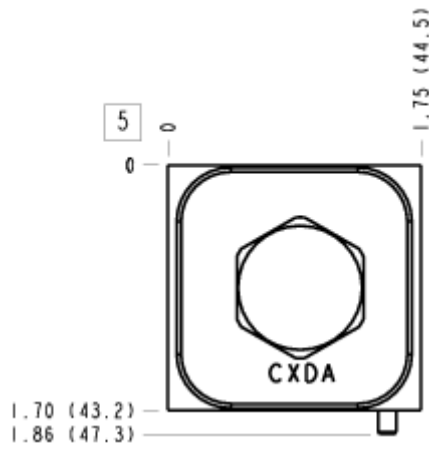
FACE GRID

1	2	3	4
5	6	7	8
9	10	11	12

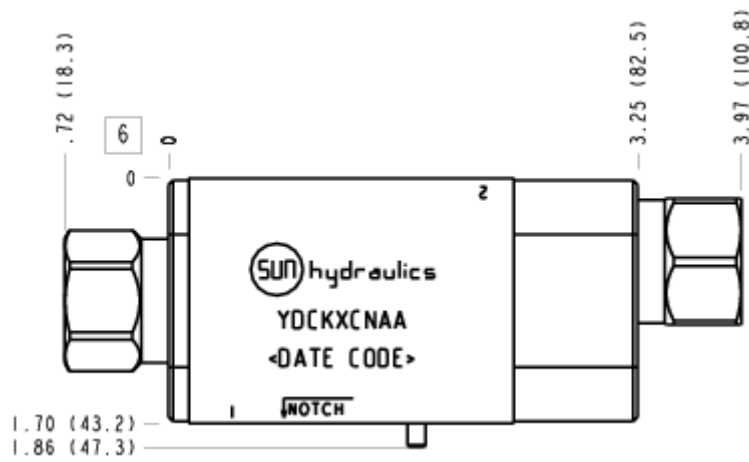
FACE 2



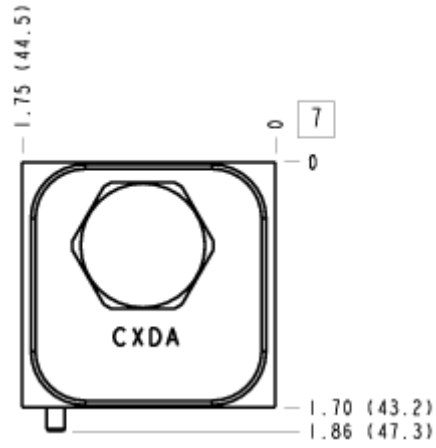
FACE 5



FACE 6



FACE 7



FACE 10

