

This assembly allows a directional valve to be removed and serviced without disturbing a stack of sandwiches or shutting down a central supply system. The manifold is fastened to the existing subplate and provides a new subplate pattern to fasten a directional valve to. Included in the assembly are a needle valve to block the P port and a check valve to provide isolation from the tank side of the circuit.

**TECHNICAL DATA** NOTE: DATA MAY VARY BY CONFIGURATION. SEE CONFIGURATION SECTION.

Body Type	Sandwich
Interface	ISO 03
Capacity	5 gpm
Body Features	Meter in P
Seal Plate Included (see notes)	No
Stack Height	1.70 in.

- NOTES:**
- Seal retainer plate is not required for this assembly.
  - For detailed information regarding the cartridges contained in this assembly, click on the models codes shown in the Included Components tab.
  - **Important:** Carefully consider the maximum system pressure. The pressure rating of the manifold is dependent on the manifold material, with the port type/size a secondary consideration. Manifolds constructed of aluminum are not rated for pressures higher than 3000 psi (210 bar), regardless of the port type/size specified.

**OPTION SELECTION EXAMPLE: YDCLLFNCA**

CONTROL		(L) MAXIMUM ORIFICE DIAMETER	(F) SEAL MATERIAL	(N)	
<b>L</b>	Standard Screw Adjustment	<b>F</b>	.33 in. (8.4 mm)	<b>N</b>	Buna-N
<b>H</b>	Calibrated Handknob with Detent Lock			<b>V</b>	Viton
<b>K</b>	Handknob				
<b>Y</b>	Tri-Grip Handknob				

**PRIMARY CARTRIDGE (C)**

<b>C</b>	30 psi (2 bar) (with NFCD primary cartridge, Fully adjustable needle valve)
<b>A</b>	4 psi (0,3 bar) (with NFCD primary cartridge, Fully adjustable needle valve)
<b>B</b>	15 psi (1 bar) (with NFCD primary cartridge, Fully adjustable needle valve)
<b>D</b>	50 psi (3,5 bar) (with NFCD primary cartridge, Fully adjustable needle valve)
<b>E</b>	75 psi (5 bar) (with NFCD primary cartridge, Fully adjustable needle valve)
<b>F</b>	100 psi (7 bar) (with NFCD primary cartridge, Fully adjustable needle valve)
<b>Z</b>	1 psi (0,07 bar) (with NFCD primary cartridge, Fully adjustable needle valve)

**INCLUDED COMPONENTS**

Part	Description	Quantity
300-002-008*	Screw	4
350-023*	Studnut	4
500-001-012*	O-Ring	4
811-001-006*	Pin	1
CXDAXCN	Cartridge	1
NFCDLFN	Cartridge - Primary	1

**TECHNICAL FEATURES**

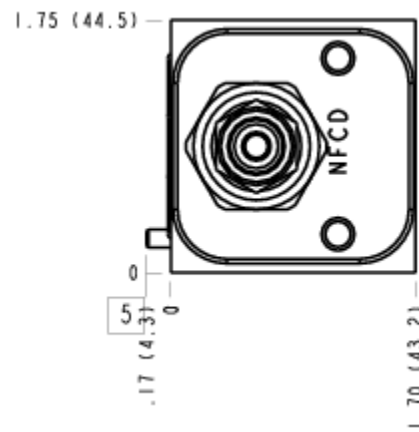
- The sharp-edged orifice design minimizes flow variations due to viscosity changes.
- A balanced adjustment mechanism allows for easy adjustment even at high pressures.
- Because needle valves are non-compensating devices, the fixed orifice size will regulate flow through the valve in proportion to the square root of the pressure differential across ports 1 and 2.

# MANIFOLD FACES

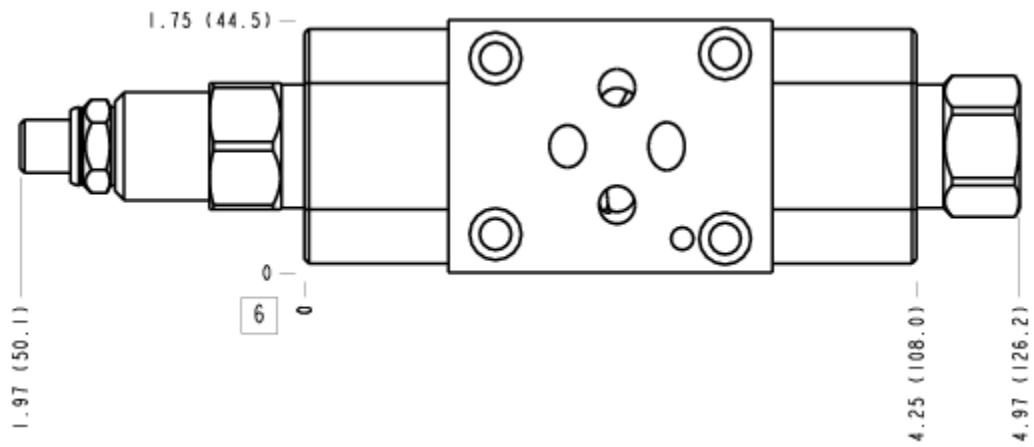
## FACE GRID

5	6	7	8
9	10	11	12

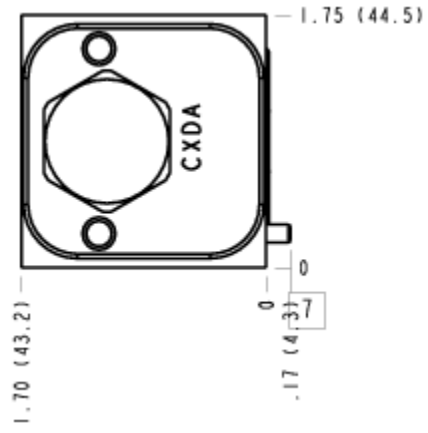
### FACE 5



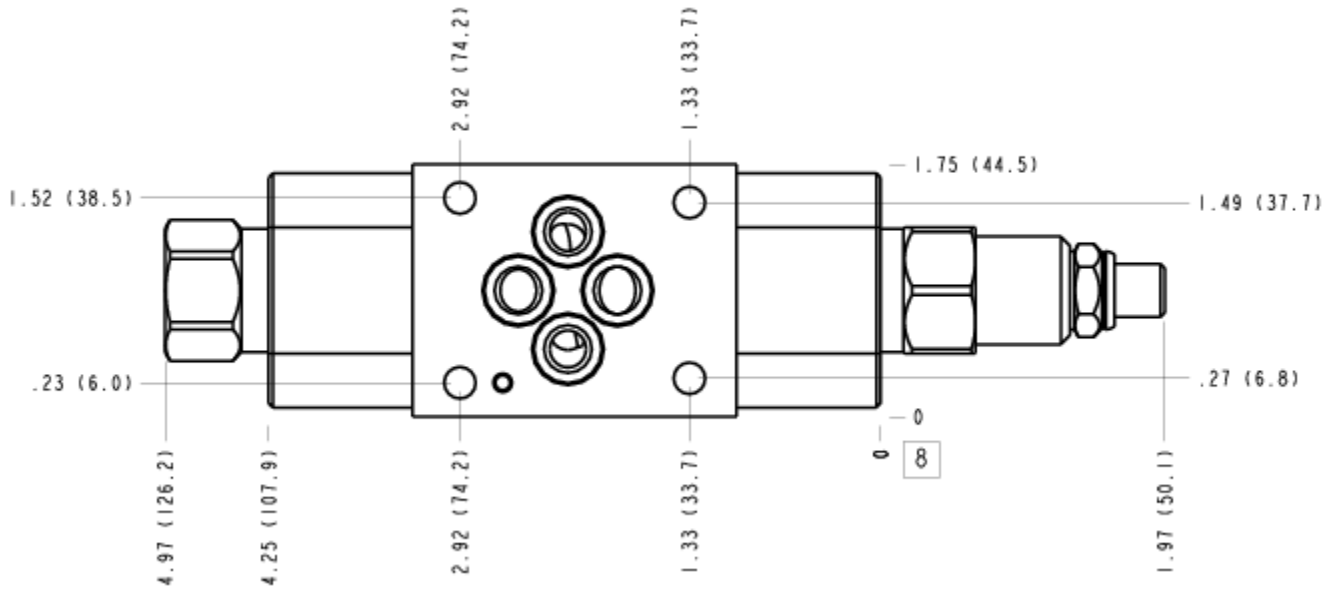
### FACE 6



FACE 7



FACE 8



FACE 10

