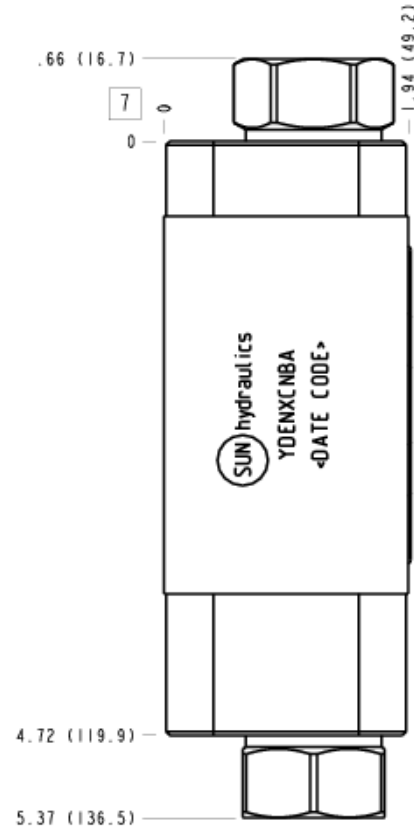


CONFIGURATION

X Control	Not Adjustable
C Cracking Pressure	30 psi (2 bar)
N Seal Material	Buna-N
B Primary Cartridge	B (with CXEE primary cartridge, Caudal libre del lado a la nariz anti-retorno válvula con puerto 3 bloqueado)
A Port and Material Designation	A Aluminum



NOTE: DATA MAY VARY FROM DRAWING. SEE CONFIGURATION SECTION.

TECHNICAL DATA

Body Type	apililables
Interface	ISO 05
Capacity	80 L/min.
Body Features	B a A
Seal Plate Included (see notes)	No
Stack Height	49 mm

OPTION SELECTION EXAMPLE: YDENXCNBA

CONTROL	(X) CRACKING PRESSURE	(C) SEAL MATERIAL	(N)
X Not Adjustable	C 30 psi (2 bar)	N Buna-N	
	F 100 psi (7 bar)	V Viton	
	Z 1 psi (0,07 bar)		

PRIMARY CARTRIDGE (B)

B B (with CXEE primary cartridge, Caudal libre del lado a la nariz anti-retorno válvula con puerto 3 bloqueado)
--

INCLUDED COMPONENTS

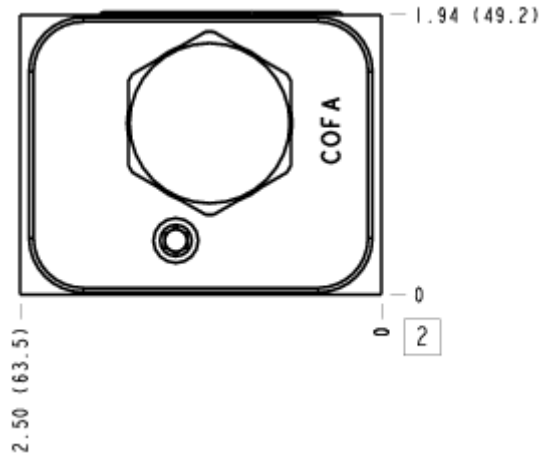
Part	Description	Quantity
340-001*	Pipe Plug	2
500-001-014*	O-Ring	5
COFAXEN	Cartridge	1
CXEEXCN	Cartridge - Primary	1

MANIFOLD FACES

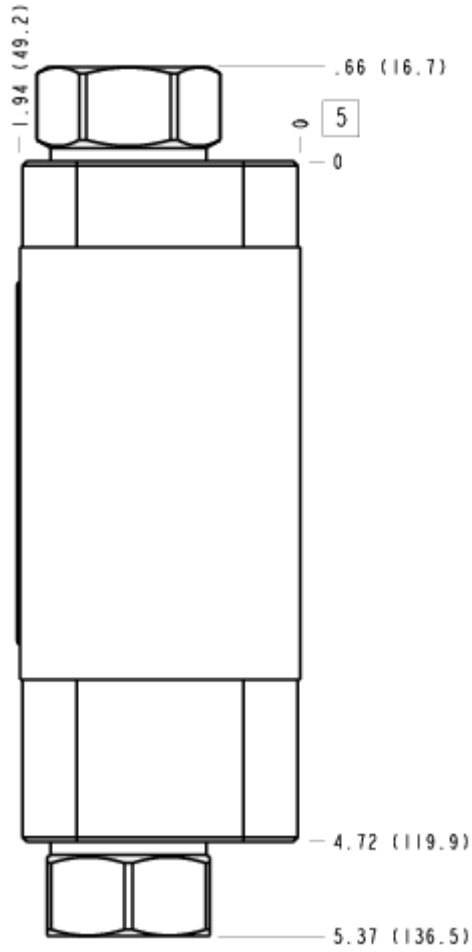
FACE GRID

1	2	3	4
5	6	7	8
9	10	11	12

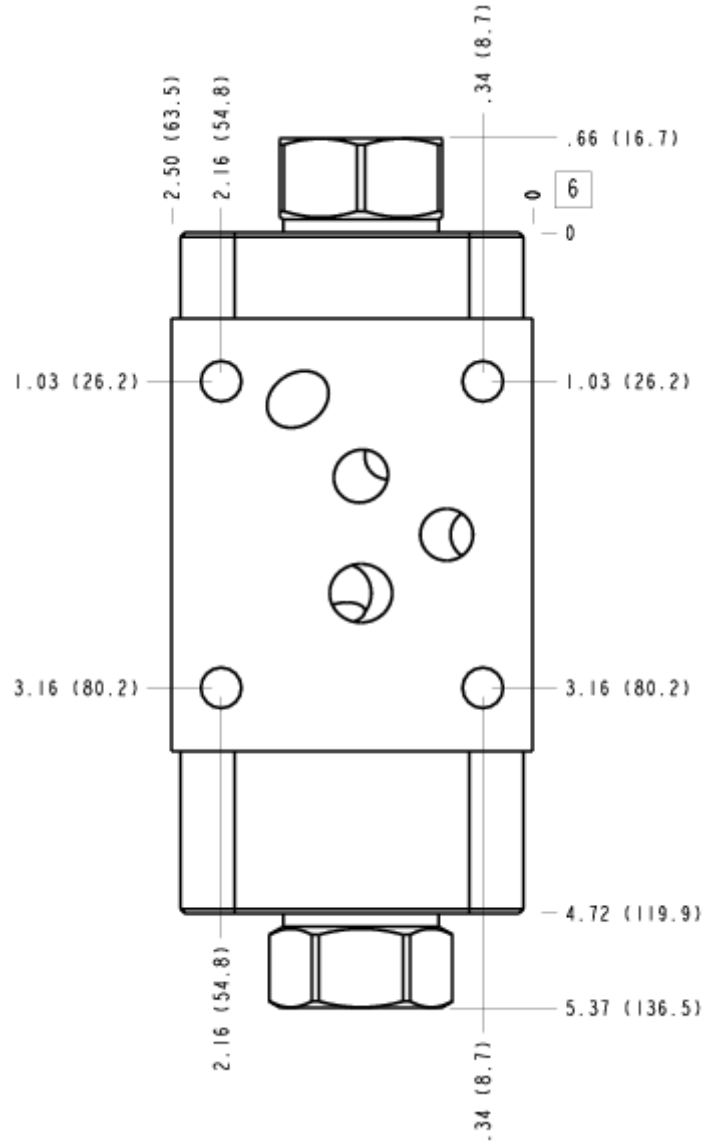
FACE 2



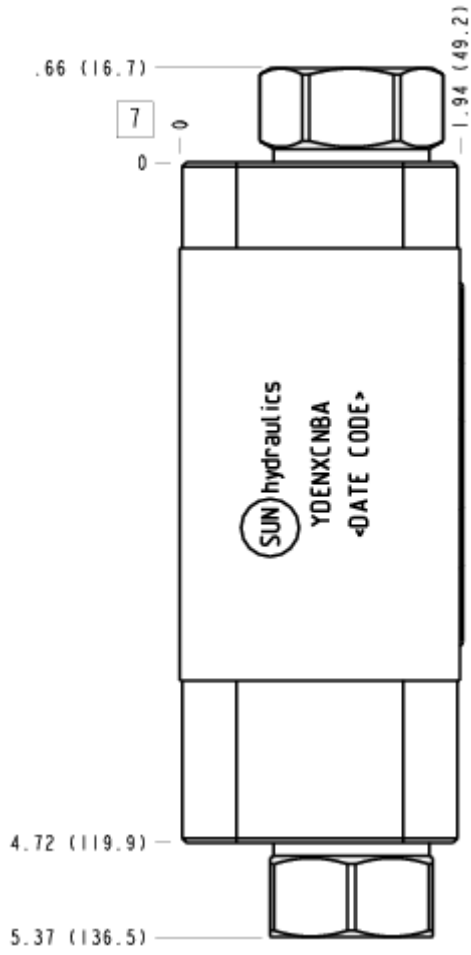
FACE 5



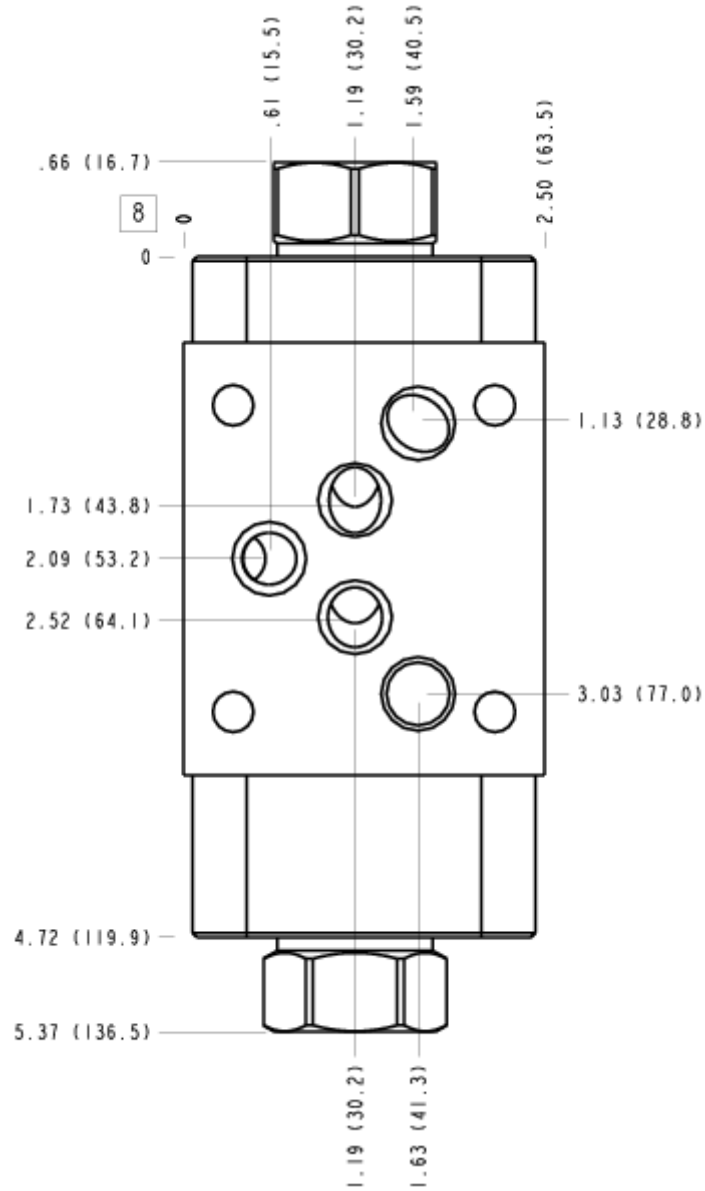
FACE 6



FACE 7



FACE 8



FACE 10

