

TECHNICAL DATA NOTE: DATA MAY VARY BY CONFIGURATION. SEE CONFIGURATION SECTION.

Body Type	montaje en línea
Capacity	120 L/min.
Mounting Hole Diameter	10,7 mm
Mounting Hole Depth	Through
Mounting Hole Quantity	2

OPTION SELECTION EXAMPLE: YDEPXCNAL

CONTROL	(X) CRACKING PRESSURE	(C) SEAL MATERIAL	(N)
X Not Adjustable	C 30 psi (2 bar)	N Buna-N	
	F 100 psi (7 bar)	V Viton	
	Z 1 psi (0,07 bar)		

PRIMARY CARTRIDGE (A)

A A (with CXEE primary cartridge, Caudal libre del lado a la nariz anti-retorno válvula con puerto 3 bloqueado)
--

INCLUDED COMPONENTS

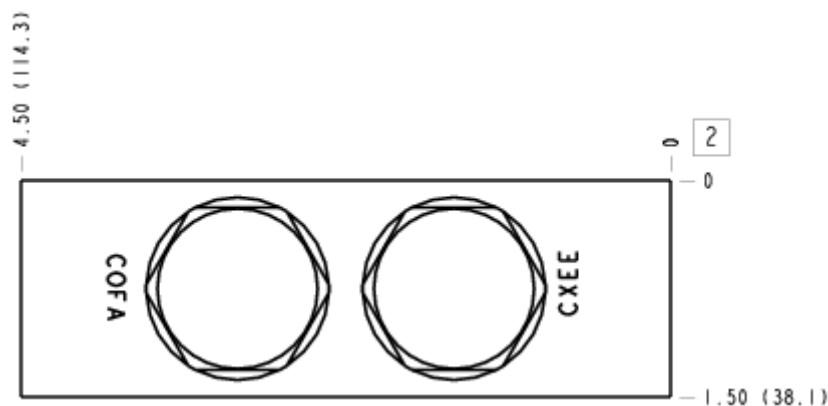
Part	Description	Quantity
COFAXEN	Cartridge	1
CXEEXCN	Cartridge - Primary	1

MANIFOLD FACES

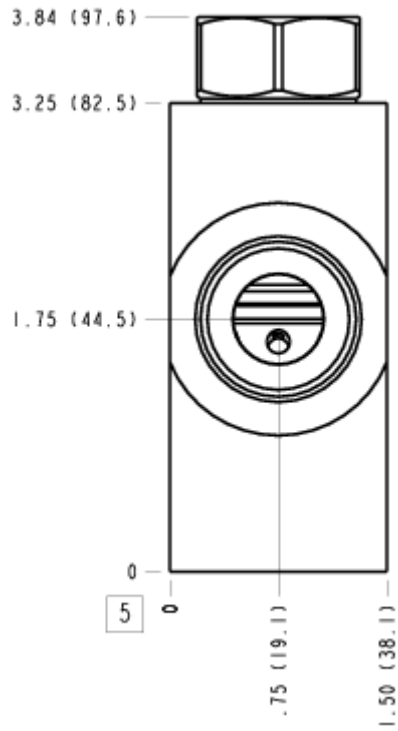
FACE GRID

1	2	3	4
5	6	7	8
9	10	11	12

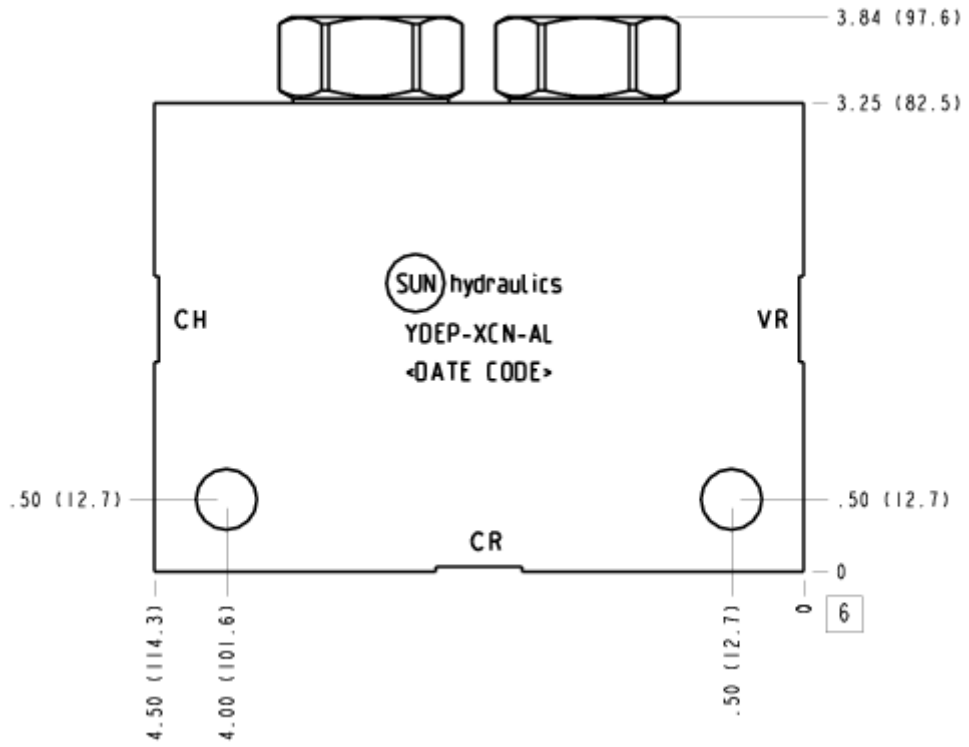
FACE 2



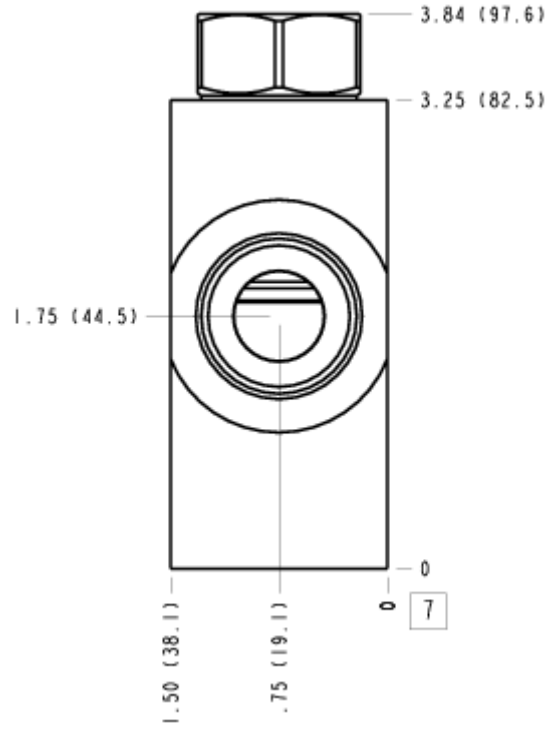
FACE 5



FACE 6



FACE 7



FACE 10

