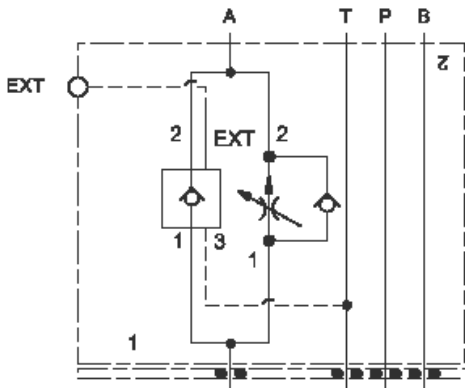
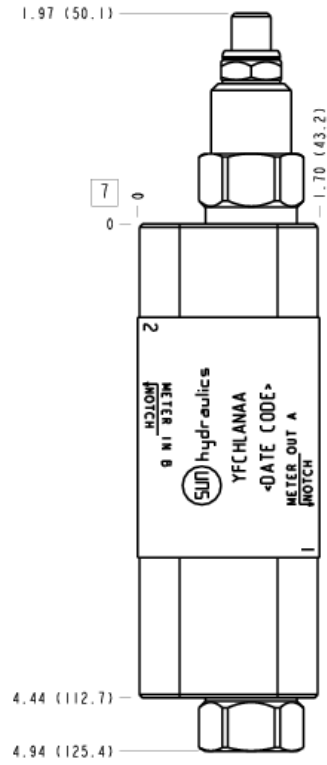


Meter in B



Meter out A



CONFIGURATION OPTIONS

Model Code Example: YFCHLANAA

| CONTROL | (L) | ADJUSTMENT RANGE | (A) | SEAL MATERIAL | (N) |
|---------|--------------------------------|------------------|------------------------------|---------------|--------|
| L | Standard Screw Adjustment | A | .1 - 6 gpm (0,4 - 23 L/min.) | N | Buna-N |
| C | Tamper Resistant - Factory Set | B | .1 - 2 gpm (0,4 - 8 L/min.) | V | Viton |
| Y | manilla de tres agarres | | | | |

PRIMARY CARTRIDGE

(A)

| | |
|---|--|
| A | A (with FDBA primary cartridge, Totalmente ajustable compensado por presión control de caudal válvula con anti-retorno de caudal inverso) |
|---|--|

INCLUDED COMPONENTS

| Part | Description | Quantity |
|--------------|---------------------|----------|
| 500-001-012* | O-Ring | 4 |
| 700-002* | Seal Plate | 1 |
| 811-001-006* | Pin | 1 |
| 850-004-250* | Plug | 2 |
| CKCHVCN | Cartridge | 1 |
| FDBALAN | Cartridge - Primary | 1 |