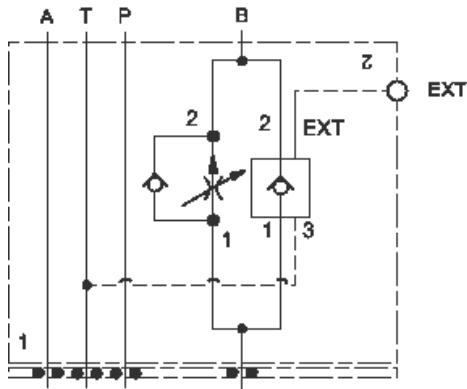


Meter in A



Meter out B

TECHNICAL DATA NOTE: DATA MAY VARY BY CONFIGURATION. SEE CONFIGURATION SECTION.

	ISO 03
Stack Height	44,5 mm
()	
	0 - 6 gpm
	Meter in on B or meter out on A

CONFIGURATION OPTIONS

Model Code Example: YFCILANA

(L)

(A)

(N)

L	A	.1 - 6 gpm (0,4 - 23 L/min.)	N
H	B	.1 - 2 gpm (0,4 - 8 L/min.)	V
O			

PRIMARY CARTRIDGE

(A)

A	A (with FDBA primary cartridge,)
----------	-----------------------------------