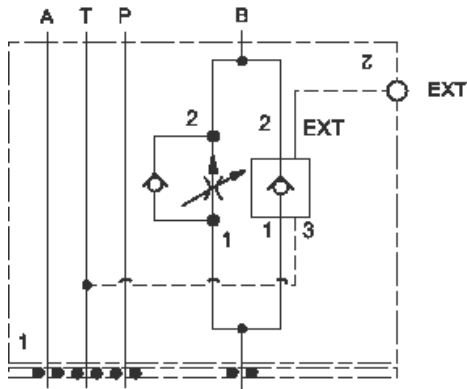


Meter in A



Meter out B

**TECHNICAL DATA** NOTE: DATA MAY VARY BY CONFIGURATION. SEE CONFIGURATION SECTION.

	ISO 03
	60 L/min.
Stack Height	44,5 mm
( )	
	0 - 6 gpm
	Meter in on B or meter out on A

OPTION SELECTION EXAMPLE: YFCILANA

(L)

(A)

(N)

L

A

.1 - 6 gpm (0,4 - 23 L/min.)

N

H

B

.1 - 2 gpm (0,4 - 8 L/min.)

V

O

PRIMARY CARTRIDGE

(A)

A

A (with FDDB primary cartridge,

)