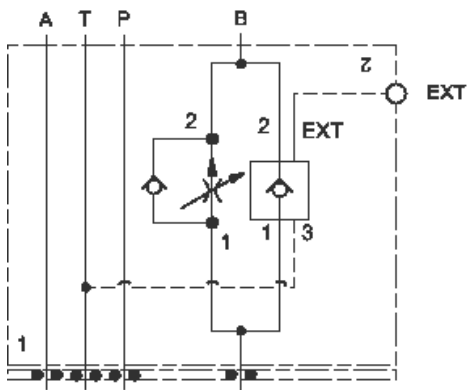
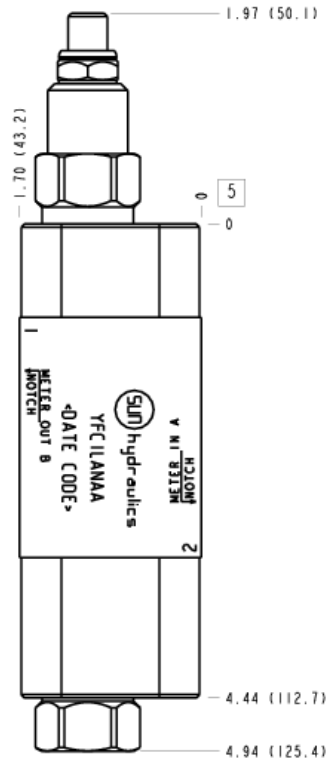


Meter in A



Meter out B



This assembly consists of a fully-adjustable, pressure-compensated flow control with reverse-flow check which provides precise flow regulation for meter-in or meter-out applications where there may be wide pressure fluctuations. It is infinitely adjustable from nearly closed up to the maximum flow. An integral high-capacity check valve provides unrestricted flow in the reverse direction. The rapid or feed rate is selected by a vented, pilot-to-open check valve with an external pilot port.

**TECHNICAL DATA** NOTE: DATA MAY VARY BY CONFIGURATION. SEE CONFIGURATION SECTION.

Body Type	Sandwich
Interface	ISO 03
Body Features	Meter in on B or meter out on A
Control Flow Range	0 - 6 gpm
Seal Plate Included (see notes)	Yes
Stack Height	1.75 in.

- NOTES:**
- The external 1/4 NPTF pilot port is part of the pilot to open check cartridge.
  - Stack height value in technical data table includes seal retainer plate.
  - For detailed information regarding the cartridges contained in this assembly, click on the models codes shown in the Included Components tab.
  - **Important:** Carefully consider the maximum system pressure. The pressure rating of the manifold is dependent on the manifold material, with the port type/size a secondary consideration. Manifolds constructed of aluminum are not rated for pressures higher than 3000 psi (210 bar), regardless of the port type/size specified.

**CONFIGURATION OPTIONS**

Model Code Example: YFCILANAA

CONTROL	(L) ADJUSTMENT RANGE	(A) SEAL MATERIAL	(N)
<b>L</b> Standard Screw Adjustment	<b>A</b> .1 - 6 gpm (0,4 - 23 L/min.)	<b>N</b> Buna-N	
<b>C</b> Tamper Resistant - Factory Set	<b>B</b> .1 - 2 gpm (0,4 - 8 L/min.)	<b>V</b> Viton	
<b>H</b> Calibrated Handknob with Detent Lock			
<b>K</b> Handknob			
<b>Y</b> Tri-Grip Handknob			

**PRIMARY CARTRIDGE**

(A)

<b>A</b> A (with FDBA primary cartridge, Fully adjustable pressure compensated flow control valve with reverse flow check)
--

**INCLUDED COMPONENTS**

Part	Description	Quantity
500-001-012*	O-Ring	4
700-002*	Seal Plate	1
811-001-006*	Pin	1
850-004-250*	Plug	2
CKCHVCN	Cartridge	1
FDBALAN	Cartridge - Primary	1