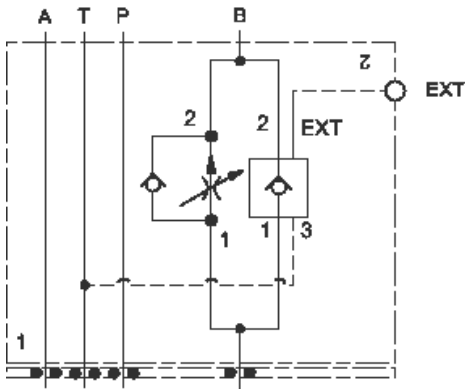
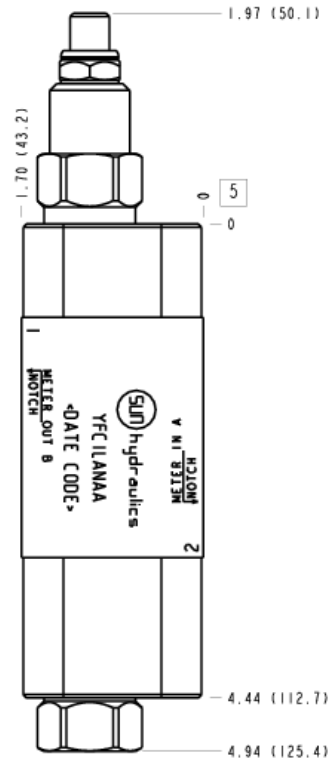


Meter in A



Meter out B



TECHNICAL DATA NOTE: DATA MAY VARY BY CONFIGURATION. SEE CONFIGURATION SECTION.

Body Type	apilables
Interface	ISO 03
Body Features	Meter in on B or meter out on A
Control Flow Range	0 - 6 gpm
Seal Plate Included (see notes)	Yes
Stack Height	44,5 mm

CONFIGURATION OPTIONS

Model Code Example: YFCILANAA

CONTROL	(L)	ADJUSTMENT RANGE	(A)	SEAL MATERIAL	(N)
L	Standard Screw Adjustment	A	.1 - 6 gpm (0,4 - 23 L/min.)	N	Buna-N
C	Tamper Resistant - Factory Set	B	.1 - 2 gpm (0,4 - 8 L/min.)	V	Viton
H	Calibrated Handknob with Detent Lock				
K	manilla				

PRIMARY CARTRIDGE

(A)

A	A (with FDBA primary cartridge, Totalmente ajustable compensado por presión control de caudal válvula con anti-retorno de caudal inverso)
----------	--

INCLUDED COMPONENTS

Part	Description	Quantity
500-001-012*	O-Ring	4
700-002*	Seal Plate	1
811-001-006*	Pin	1
850-004-250*	Plug	2
CKCHVCN	Cartridge	1
FDBALAN	Cartridge - Primary	1