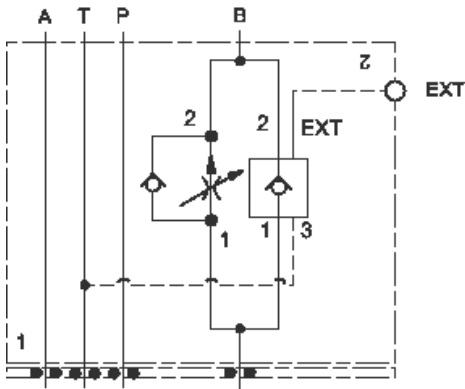
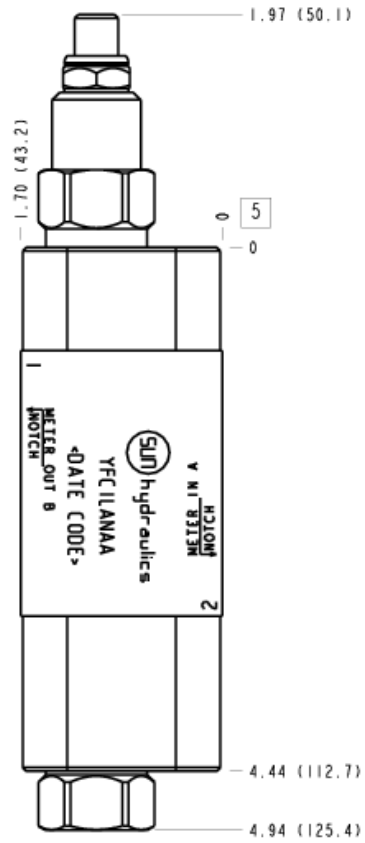


Meter in A



Meter out B



TECHNICAL DATA

Body Type	Sandwich
Interface	ISO 03
Capacity	60 L/min.
Body Features	Meter in on B or meter out on A
Control Flow Range	0 - 6 gpm
Seal Plate Included (see notes)	Yes
Stack Height	44,5 mm

OPTION SELECTION EXAMPLE: YFCILANAA

CONTROL	(L) ADJUSTMENT RANGE	(A) SEAL MATERIAL	(N)
L Standard Screw Adjustment	A .1 - 6 gpm (0,4 - 23 L/min.)	N Buna-N	
C Tamper Resistant - Factory Set	B .1 - 2 gpm (0,4 - 8 L/min.)	V Viton	
Y manilla de tres agarres			

PRIMARY CARTRIDGE (A)

A A (with FDBA primary cartridge, Totalmente ajustable compensado por presión control de caudal válvula con anti-retorno de caudal inverso)

INCLUDED COMPONENTS

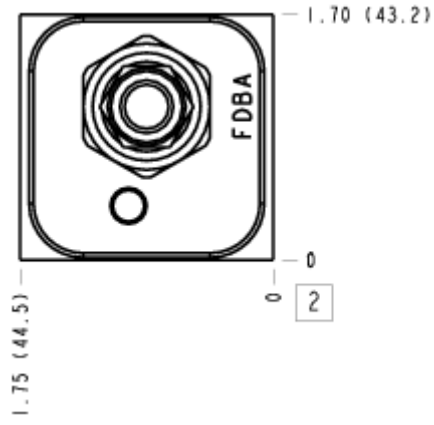
Part	Description	Quantity
500-001-012*	O-Ring	4
700-002*	Seal Plate	1
811-001-006*	Pin	1
850-004-250*	Plug	2
CKCHVCN	Cartridge	1
FDBALAN	Cartridge - Primary	1

MANIFOLD FACES

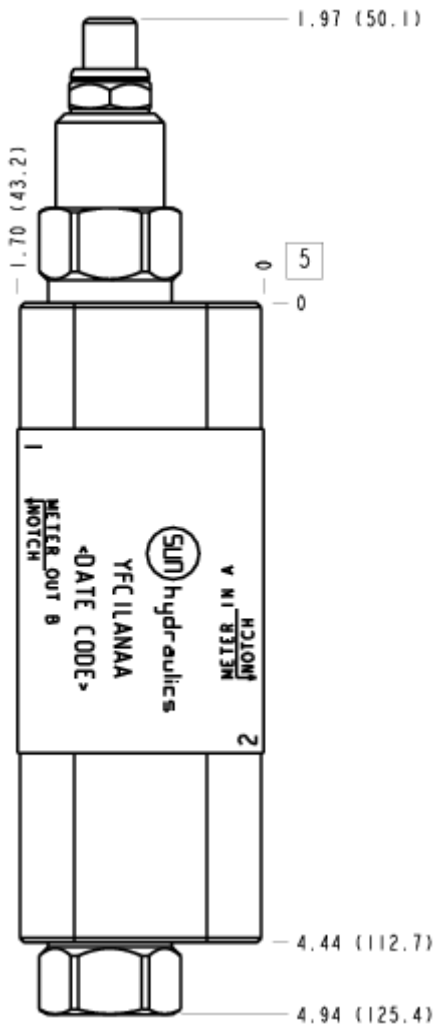
FACE GRID

1	2	3	4
5	6	7	8
9	10	11	12

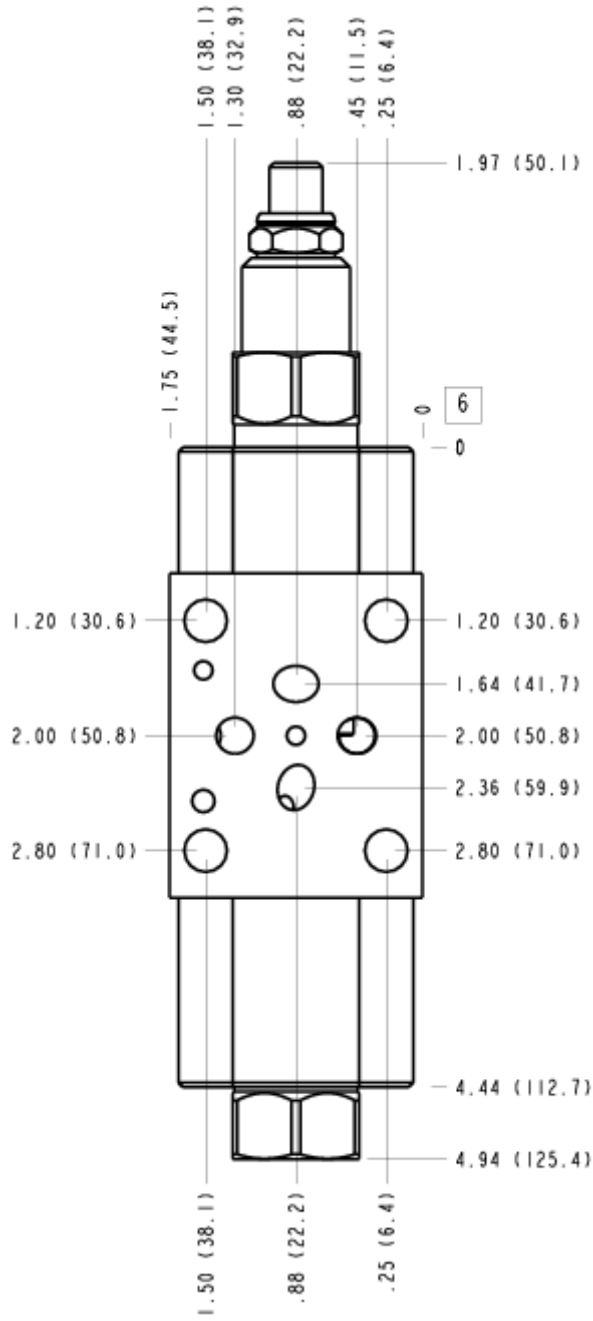
FACE 2



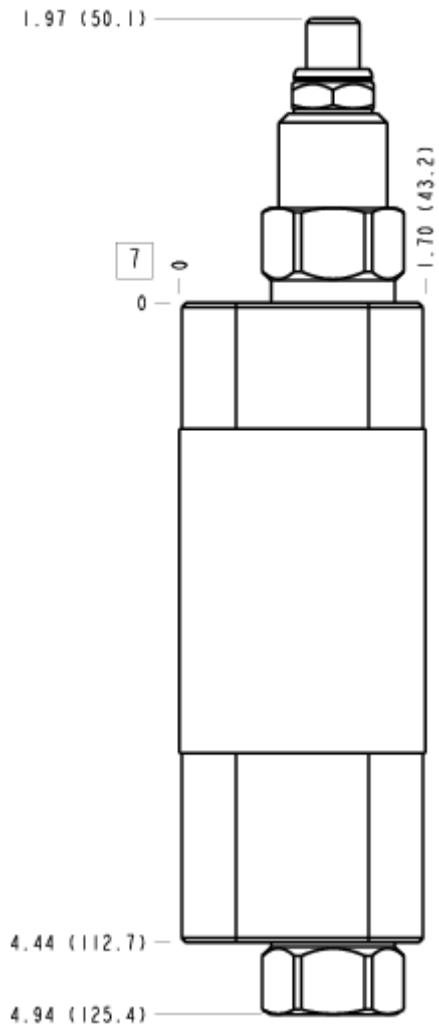
FACE 5



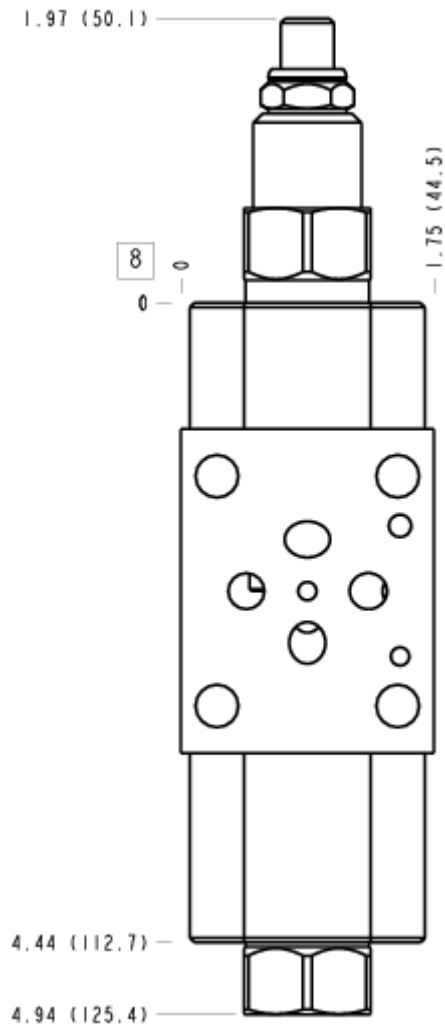
FACE 6



FACE 7



FACE 8



FACE 10

