

This assembly consists of a three-port normally closed modulating element with relief which provides two functions when combined with an external orifice. The mainstage is a bypass compensator that controls a priority flow into the circuit, determined by the orifice created by the needle valve. Input flow in excess of the priority flow is bypassed to tank (port T). If the inlet (port P) pressure rises to the valve setting, the valve operates as a normal relief valve.

TECHNICAL DATA NOTE: DATA MAY VARY BY CONFIGURATION. SEE CONFIGURATION SECTION.

Body Type	Line mount
Capacity	15 gpm
Mounting Hole Diameter	.34 in.
Mounting Hole Depth	Through
Mounting Hole Quantity	2

- NOTES:**
- **Important:** Carefully consider the maximum system pressure. The pressure rating of the manifold is dependent on the manifold material, with the port type/size a secondary consideration. Manifolds constructed of aluminum are not rated for pressures higher than 3000 psi (210 bar), regardless of the port type/size specified.
 - For detailed information regarding the cartridges contained in this assembly, click on the models codes shown in the Included Components tab.

OPTION SELECTION EXAMPLE: YFCPLCNAJ

CONTROL	(L) MAXIMUM ORIFICE DIAMETER	(C) SEAL MATERIAL	(N)
L Standard Screw Adjustment	C .19 in. (4,8 mm)	N Buna-N	
H Calibrated Handknob with Detent Lock	D .09 in. (2,3 mm)	V Viton	
K Handknob			

PRIMARY CARTRIDGE	(A)
A	A (with NFCC primary cartridge, Fully adjustable needle valve)

INCLUDED COMPONENTS

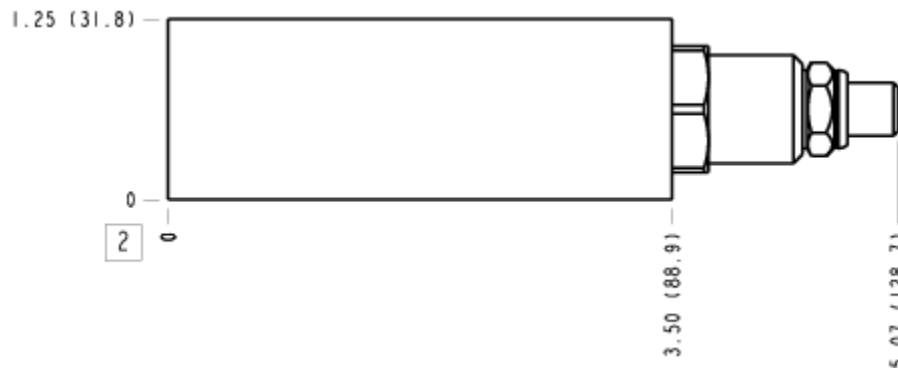
Part	Description	Quantity
NFCCLCN	Cartridge - Primary	1
RVCBLAN	Cartridge	1

MANIFOLD FACES

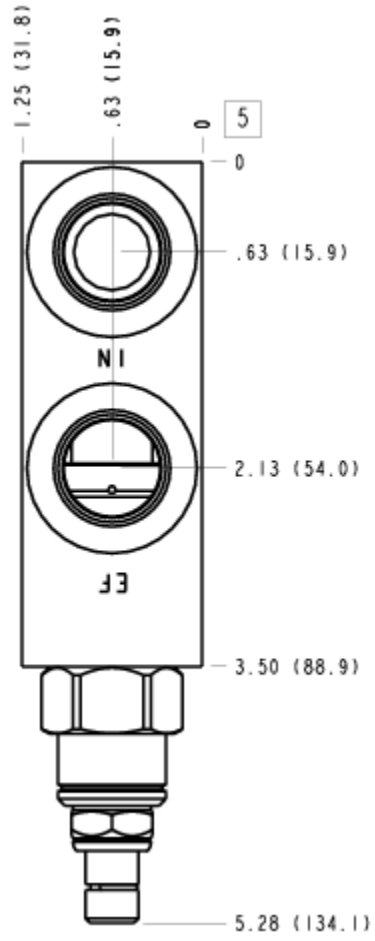
FACE GRID

1	2	3	4
5	6	7	8
9	10	11	12

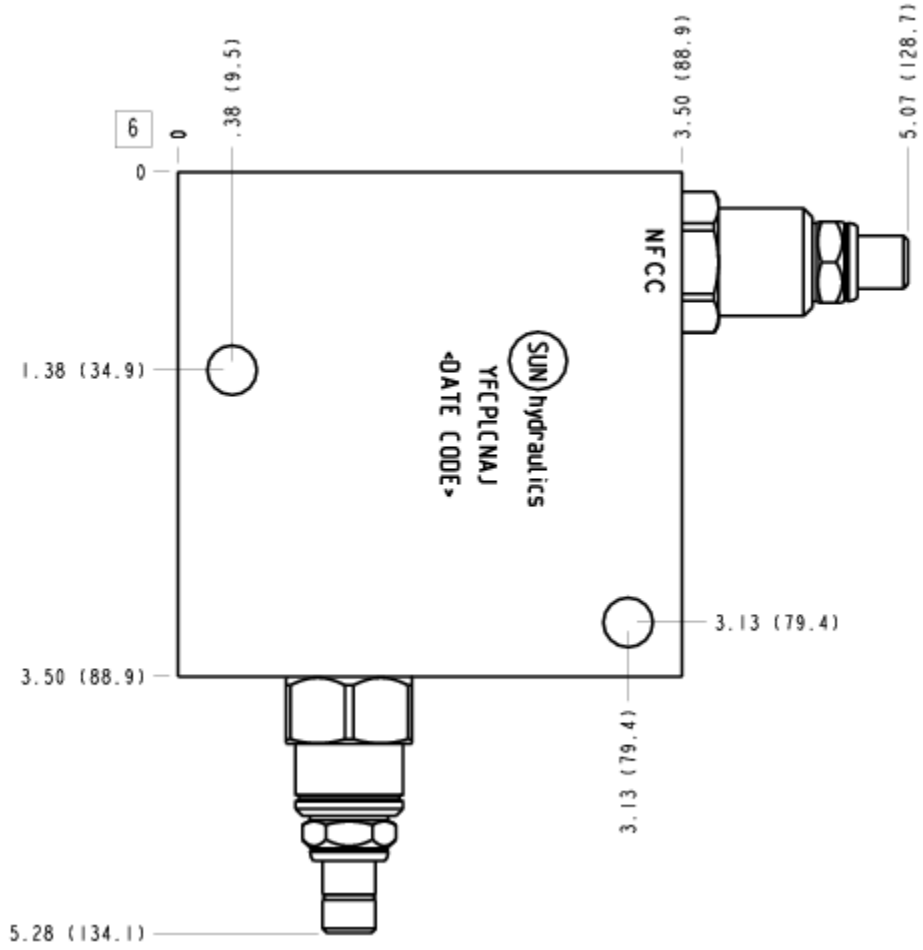
FACE 2



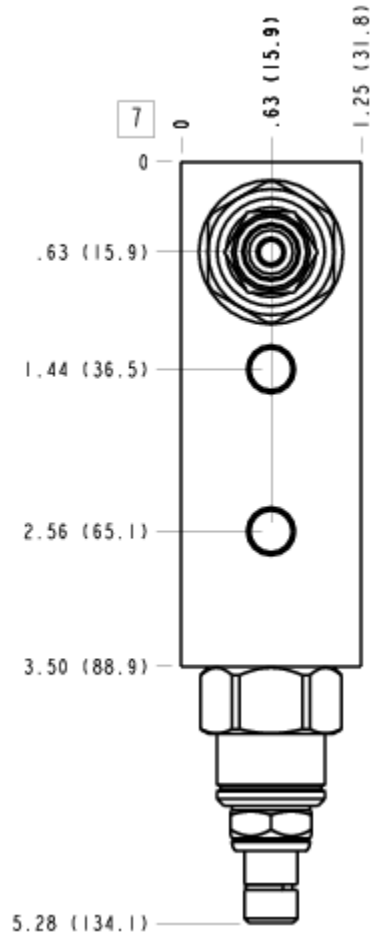
FACE 5



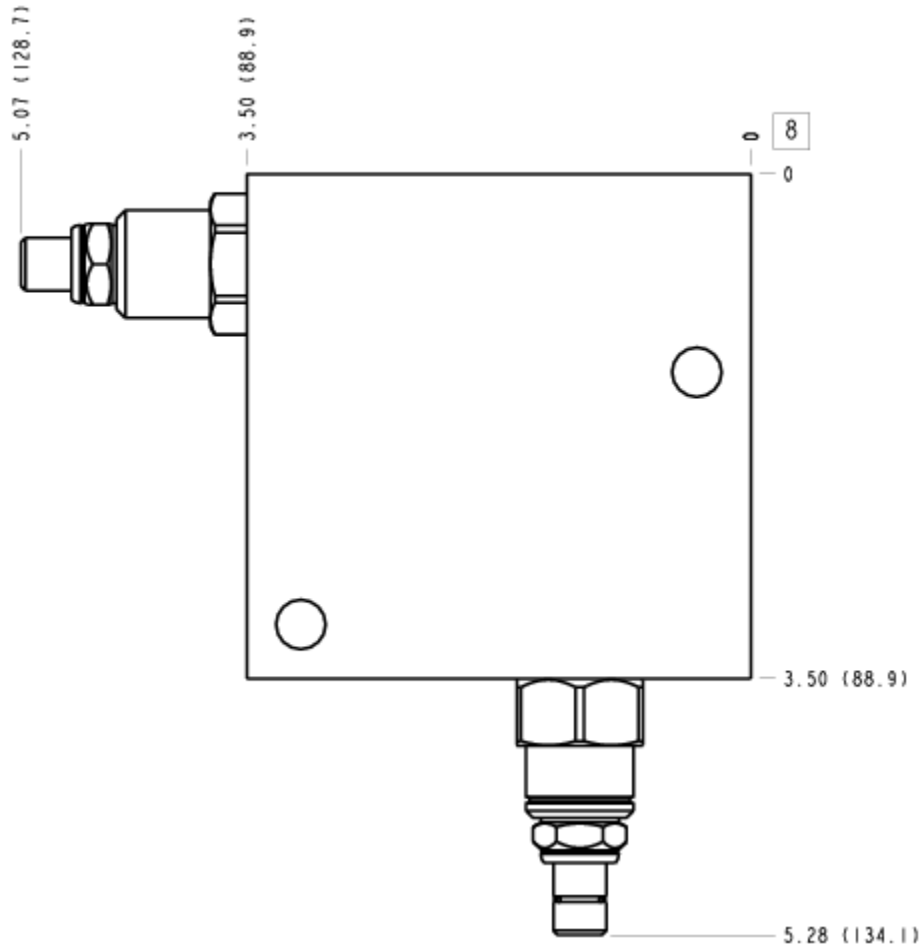
FACE 6



FACE 7



FACE 8



FACE 10

