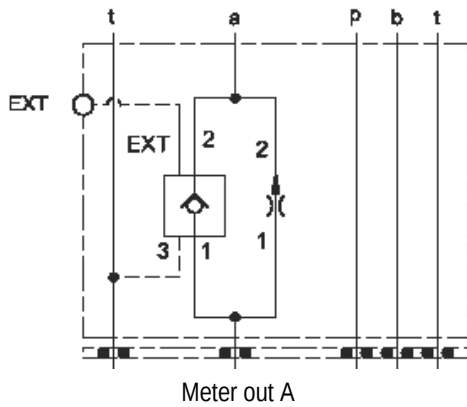


TECHNICAL DATA NOTE: DATA MAY VARY BY CONFIGURATION. SEE CONFIGURATION SECTION.

	ISO 05
()	
	0 - 12 gpm
	Meter in on B or meter out on A



CONFIGURATION OPTIONS

Model Code Example: YFECXANBA

(X)

(A)

(N)

X	A	.1 - 12 gpm (0,4 - 45 L/min.)	N
C	-		V

PRIMARY CARTRIDGE

(B)

B	B (with FXDA primary cartridge, Fixed-orifice,)		
B	B (with FXDA8 primary cartridge,	fixed-orifice,	T-8A)

INCLUDED COMPONENTS

Part	Description	Quantity
500-001-014*	O-Ring	5
700-001*	Seal Plate	1
CKIEVCN	Cartridge	1
FXDAXAN	Cartridge - Primary	1