



**OPTION SELECTION EXAMPLE: YFEGXANAL**

CONTROL	(X) SETTING RANGE	(A) SEAL MATERIAL	(N)
<b>X</b> Not Adjustable	<b>A</b> Replaceable Orifice .1 - 12 gpm (0,4 - 45 L/min.)	<b>N</b> Buna-N	
<b>C</b> Tamper Resistant - Factory Set	<b>B</b> Permanent Orifice .1 - 12 gpm (0,4 - 45 L/min.)	<b>V</b> Viton	
<b>K</b> manilla	<b>I</b> Incomplete (no orifice) 17 gpm (64 L/min.)		
<b>L</b> Tuning Adjustment			

**PRIMARY CARTRIDGE (A)**

<b>A</b> A (with FRDA primary cartridge, Fixed-orifice, desvió / restrictivo, prioritario, control de caudal válvula )
--

**INCLUDED COMPONENTS**

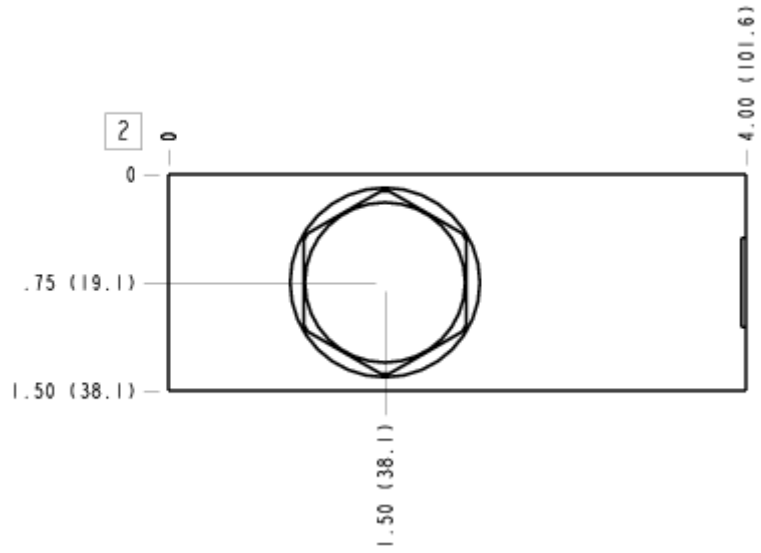
Part	Description	Quantity
FRDAXAN	Cartridge - Primary	1
RPECFAN	Cartridge	1

**MANIFOLD FACES**

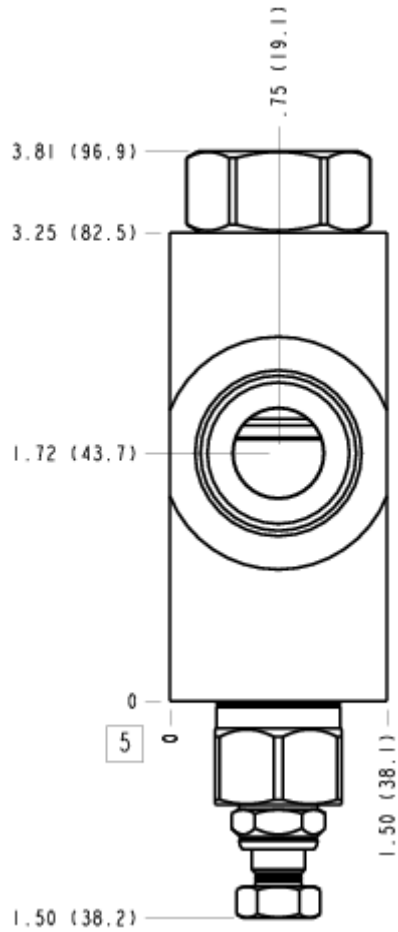
**FACE GRID**

1	2	3	4
5	6	7	8
9	10	11	12

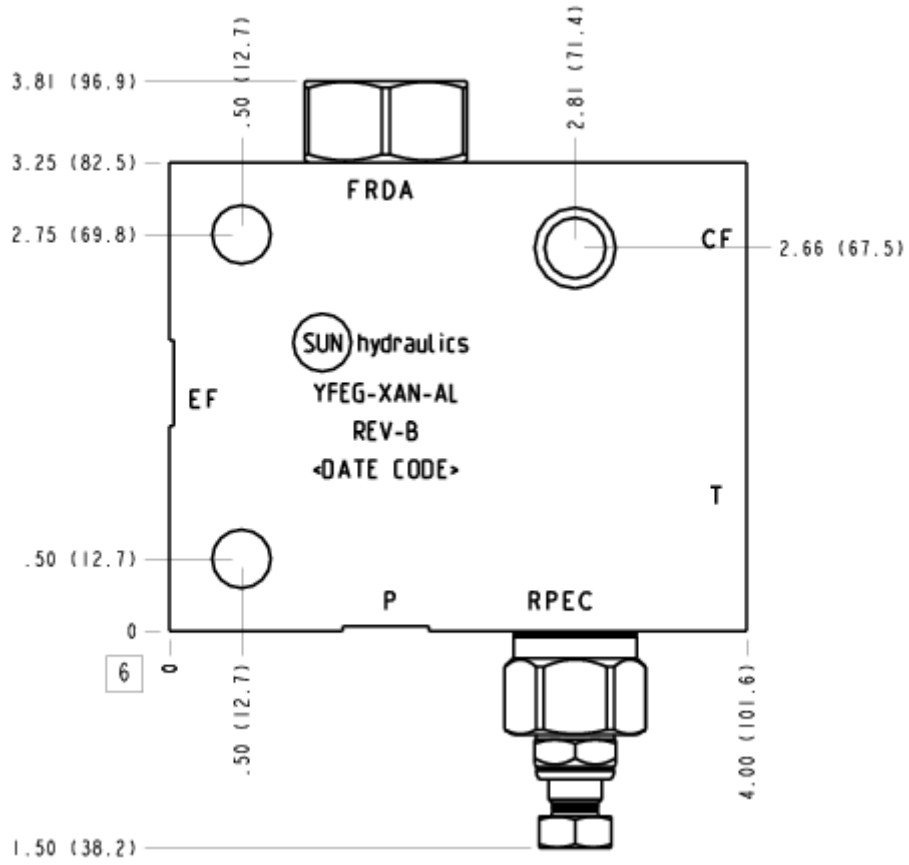
## FACE 2



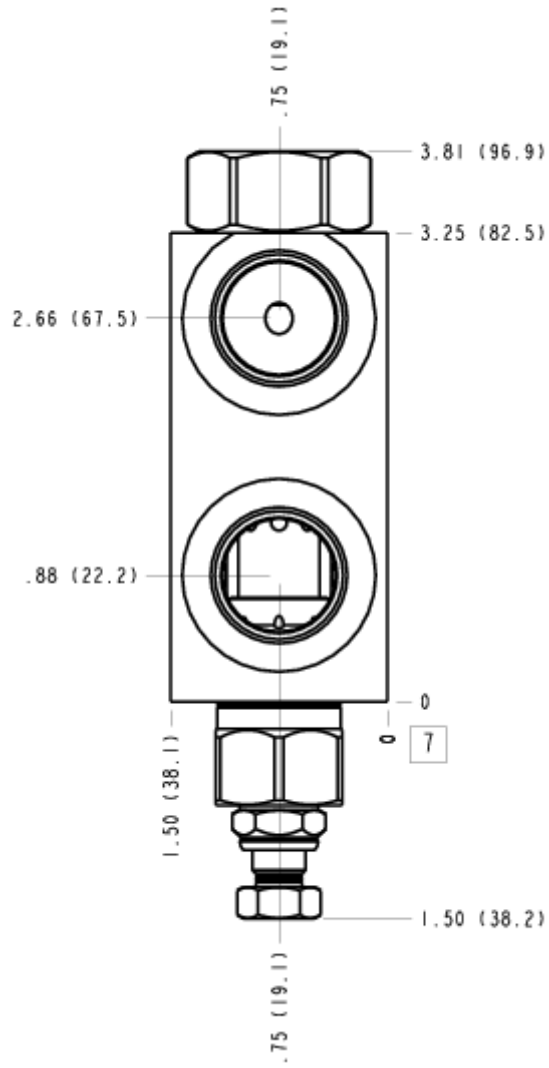
## FACE 5



# FACE 6



### FACE 7



### FACE 10

