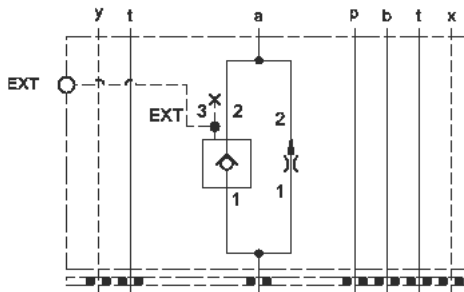


Meter in B



Meter out A

This assembly consists of a fixed-orifice, pressure-compensated flow control valve which provides precise flow regulation for meter-in or meter-out applications where there may be wide pressure fluctuations. The flow setting is specified by the user and is set at the factory. The rapid or feed rate is selected by a pilot-to-open check valve with an external pilot port.

TECHNICAL DATA NOTE: DATA MAY VARY BY CONFIGURATION. SEE CONFIGURATION SECTION.

Body Type	Sandwich
Interface	ISO 05 - X&Y
Capacity	30 gpm
Body Features	Meter in on B or meter out on A
Control Flow Range	0 - 12 gpm
Seal Plate Included (see notes)	Yes
Stack Height	2.49 in.

- NOTES:**
- The external 1/4 NPTF pilot port is part of the pilot to open check cartridge.
 - Stack height value in technical data table includes seal retainer plate.
 - For detailed information regarding the cartridges contained in this assembly, click on the models codes shown in the Included Components tab.
 - **Important:** Carefully consider the maximum system pressure. The pressure rating of the manifold is dependent on the manifold material, with the port type/size a secondary consideration. Manifolds constructed of aluminum are not rated for pressures higher than 3000 psi (210 bar), regardless of the port type/size specified.

OPTION SELECTION EXAMPLE: YFEHXANB

CONTROL		(X) SETTING RANGE	(A) SEAL MATERIAL	(N)	
X	Not Adjustable	A	Replaceable Orifice .1 - 12 gpm (0,4 - 45 L/min.)	N	Buna-N
C	Tamper Resistant - Factory Set	B	Permanent Orifice .1 - 12 gpm (0,4 - 45 L/min.)	V	Viton
K	Handknob	I	Incomplete (no orifice) 17 gpm (64 L/min.)		
L	Tuning Adjustment				

PRIMARY CARTRIDGE		(B)
B	B (with FXDA primary cartridge, Fixed-orifice, pressure compensated flow control valve)	
B	B (with FXDA8 primary cartridge, Ventable fixed-orifice, pressure compensated flow control valve with integral T-8A control cavity)	

TECHNICAL FEATURES

- The sharp-edged orifice design minimizes flow variations due to viscosity changes.
- The tuneable control option provides +/- 25% variation from the nominal factory pre-set flow. Turn the adjustment clockwise to increase.
- Customer must specify a flow rating. Factory set flow ratings are within +/- 10% of the requested setting.