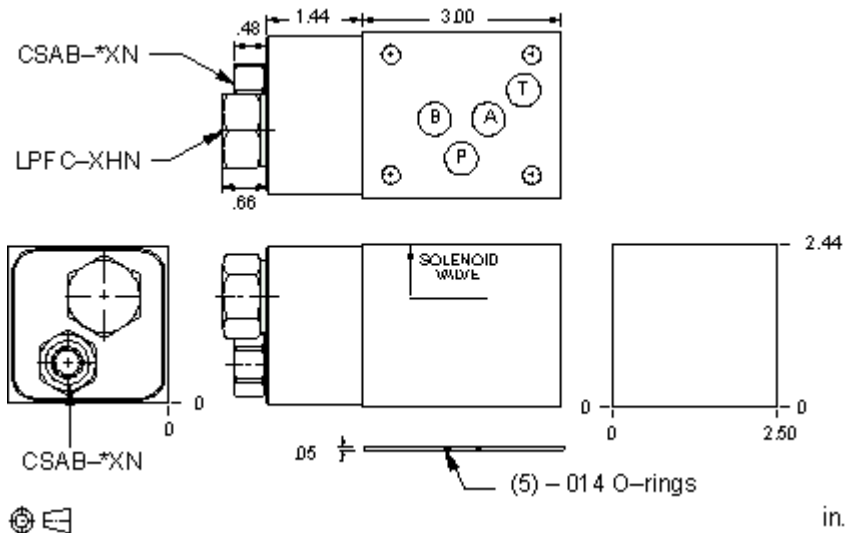


Restrictive pressure compensator



This valve assembly consists of a normally-open restrictive style compensator on the P port and a shuttle that senses pressure from the higher of the 2 work ports. Its purpose is to provide a relatively constant pressure drop across the directional valve thus isolating the directional valve spool from high flow forces. This is accomplished by throttling the supply into the P port. The constant drop creates a pressure compensated flow control out of the directional valve.

TECHNICAL DATA NOTE: DATA MAY VARY BY CONFIGURATION. SEE CONFIGURATION SECTION.

Body Type	Sandwich
Interface	ISO 05
Body Features	Meter in P
Seal Plate Included (see notes)	Yes
Stack Height	2.49 in.

- NOTES:**
- Stack height value in technical data table includes seal retainer plate.
 - For detailed information regarding the cartridges contained in this assembly, click on the models codes shown in the Included Components tab.
 - **Important:** Carefully consider the maximum system pressure. The pressure rating of the manifold is dependent on the manifold material, with the port type/size a secondary consideration. Manifolds constructed of aluminum are not rated for pressures higher than 3000 psi (210 bar), regardless of the port type/size specified.

CONFIGURATION OPTIONS

Model Code Example: YFEJXHNA

CONTROL (X)	DIFFERENTIAL PRESSURE (H)	SEAL MATERIAL (N)	SEAL MATERIAL (N)	MATERIAL DESIGNATION (A)
X Not Adjustable	H 200 psi (14 bar) D 50 psi (3,5 bar) F 100 psi (7 bar) G 150 psi (10,5 bar)	N Buna-N V Viton	N Buna-N V Viton	A A Aluminum A/S A/S Iron