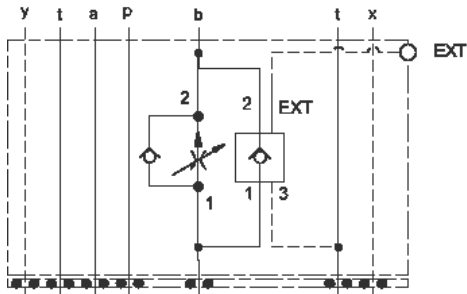


Meter in A



Meter out B

This assembly consists of a fully-adjustable, pressure-compensated flow control with reverse-flow check which provides precise flow regulation for meter-in or meter-out applications where there may be wide pressure fluctuations. It is infinitely adjustable from nearly closed up to the maximum flow. An integral high-capacity check valve provides unrestricted flow in the reverse direction. The rapid or feed rate is selected by a vented, pilot-to-open check valve with an external pilot port.

**TECHNICAL DATA** NOTE: DATA MAY VARY BY CONFIGURATION. SEE CONFIGURATION SECTION.

Body Type	Sandwich
Interface	ISO 05 - X&Y
Body Features	Meter in on A or meter out on B
Control Flow Range	0 - 12 gpm
Seal Plate Included (see notes)	Yes
Stack Height	2.49 in.

- NOTES:**
- The external 1/4 NPTF pilot port is part of the pilot to open check cartridge.
  - Stack height value in technical data table includes seal retainer plate.
  - For detailed information regarding the cartridges contained in this assembly, click on the models codes shown in the Included Components tab.
  - **Important:** Carefully consider the maximum system pressure. The pressure rating of the manifold is dependent on the manifold material, with the port type/size a secondary consideration. Manifolds constructed of aluminum are not rated for pressures higher than 3000 psi (210 bar), regardless of the port type/size specified.

**CONFIGURATION OPTIONS**

Model Code Example: YFEOLANB

CONTROL	(L)	ADJUSTMENT RANGE	(A)	SEAL MATERIAL	(N)
L	Standard Screw Adjustment	A	.2 - 12 gpm (0,8 - 45 L/min.)	N	Buna-N
C	Tamper Resistant - Factory Set	B	.2 - 3 gpm (0,8 - 11 L/min.)	V	Viton
H	Calibrated Handknob with Detent Lock				
K	Handknob				
Y	Tri-Grip Handknob				

**PRIMARY CARTRIDGE**

(B)

B	B (with FDCB primary cartridge, Fully adjustable pressure compensated flow control valve with reverse flow check)				
---	---	--	--	--	--