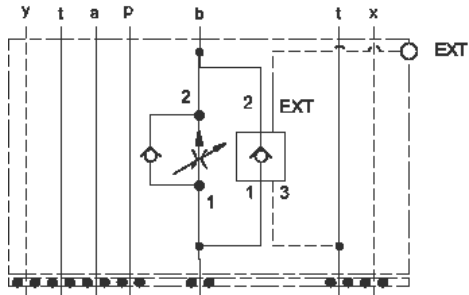


Meter in A



Meter out B

TECHNICAL DATA NOTE: DATA MAY VARY BY CONFIGURATION. SEE CONFIGURATION SECTION.

Body Type	aplilables
Interface	ISO 05 - X&Y
Capacity	120 L/min.
Body Features	Meter in on A or meter out on B
Control Flow Range	0 - 12 gpm
Seal Plate Included (see notes)	Yes
Stack Height	63 mm

OPTION SELECTION EXAMPLE: YFEOLANB

CONTROL		(L) ADJUSTMENT RANGE	(A) SEAL MATERIAL	(N)	
L	Standard Screw Adjustment	A	.2 - 12 gpm (0.8 - 45 L/min.)	N	Buna-N
C	Tamper Resistant - Factory Set			V	Viton
H	Calibrated Handknob with Detent Lock				
K	manilla				
PRIMARY CARTRIDGE				(B)	
B	B (with FDCB primary cartridge, Totalmente ajustable compensado por presión control de caudal válvula con anti-retorno de caudal inverso)				