

**TECHNICAL DATA** NOTE: DATA MAY VARY BY CONFIGURATION. SEE CONFIGURATION SECTION.

|  |            |
|--|------------|
|  |            |
|  | ISO 08     |
|  | 480 L/min. |
|  | P          |

**OPTION SELECTION EXAMPLE: YFICXHNCA**

(X) (H) (N)

|          |                           |          |
|----------|---------------------------|----------|
| <b>X</b> | <b>H</b> 200 psi (14 bar) | <b>N</b> |
|          | <b>D</b> 50 psi (3,5 bar) | <b>V</b> |
|          | <b>F</b> 100 psi (7 bar)  |          |

**PRIMARY CARTRIDGE**

(C)

|  |
|--|
| <b>C</b> C (with LRJC primary cartridge, ) |
|--|

**INCLUDED COMPONENTS**

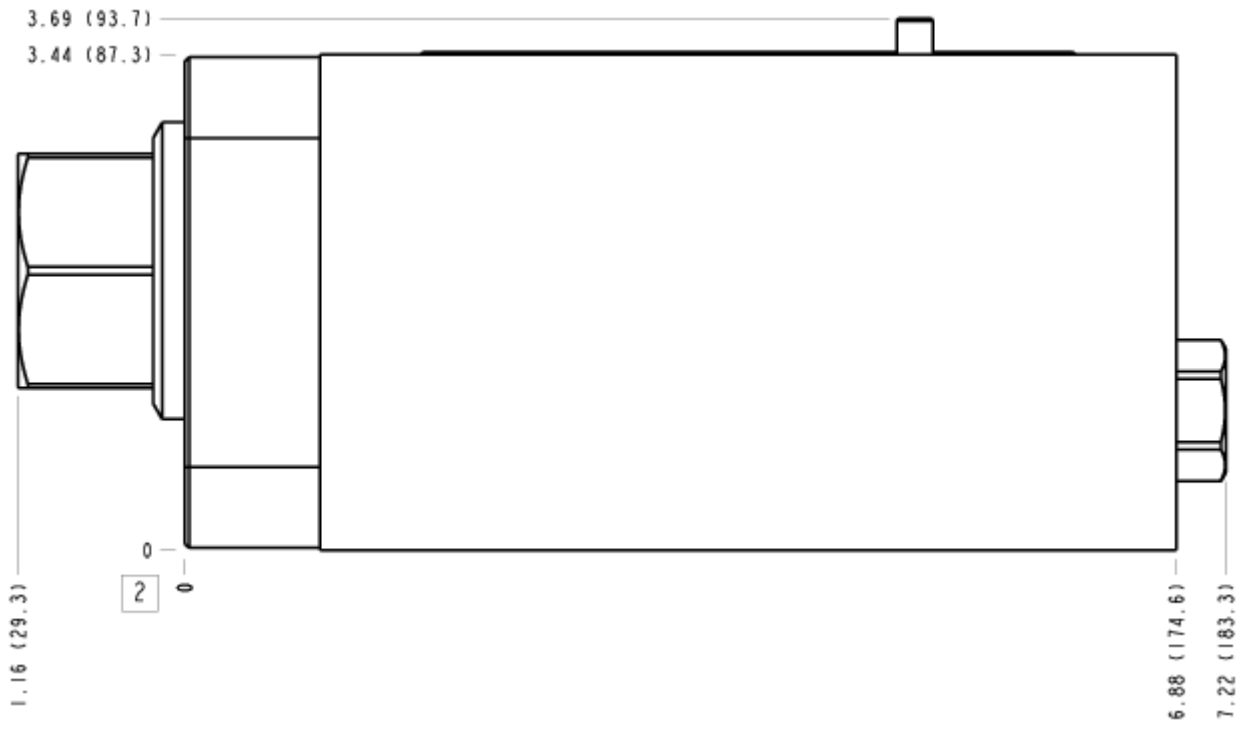
| Part          | Description         | Quantity |
|---------------|---------------------|----------|
| 500-001-114*  | O-Ring              | 2        |
| 500-001-121*  | O-Ring              | 4        |
| 811-001-002*  | Locating Pin        | 1        |
| A330-006-004* | SAE Plug            | 1        |
| CSABXXN       | Cartridge           | 1        |
| LRJCXHN       | Cartridge - Primary | 1        |

**MANIFOLD FACES**

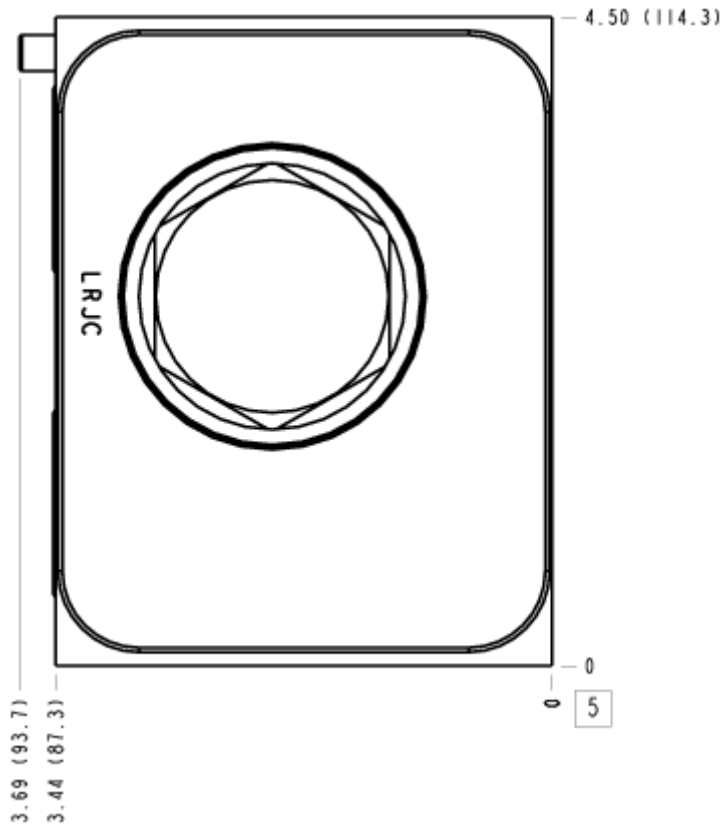
**FACE GRID**

|   |    |    |    |
|---|----|----|----|
| 1 | 2  | 3  | 4  |
| 5 | 6  | 7  | 8  |
| 9 | 10 | 11 | 12 |

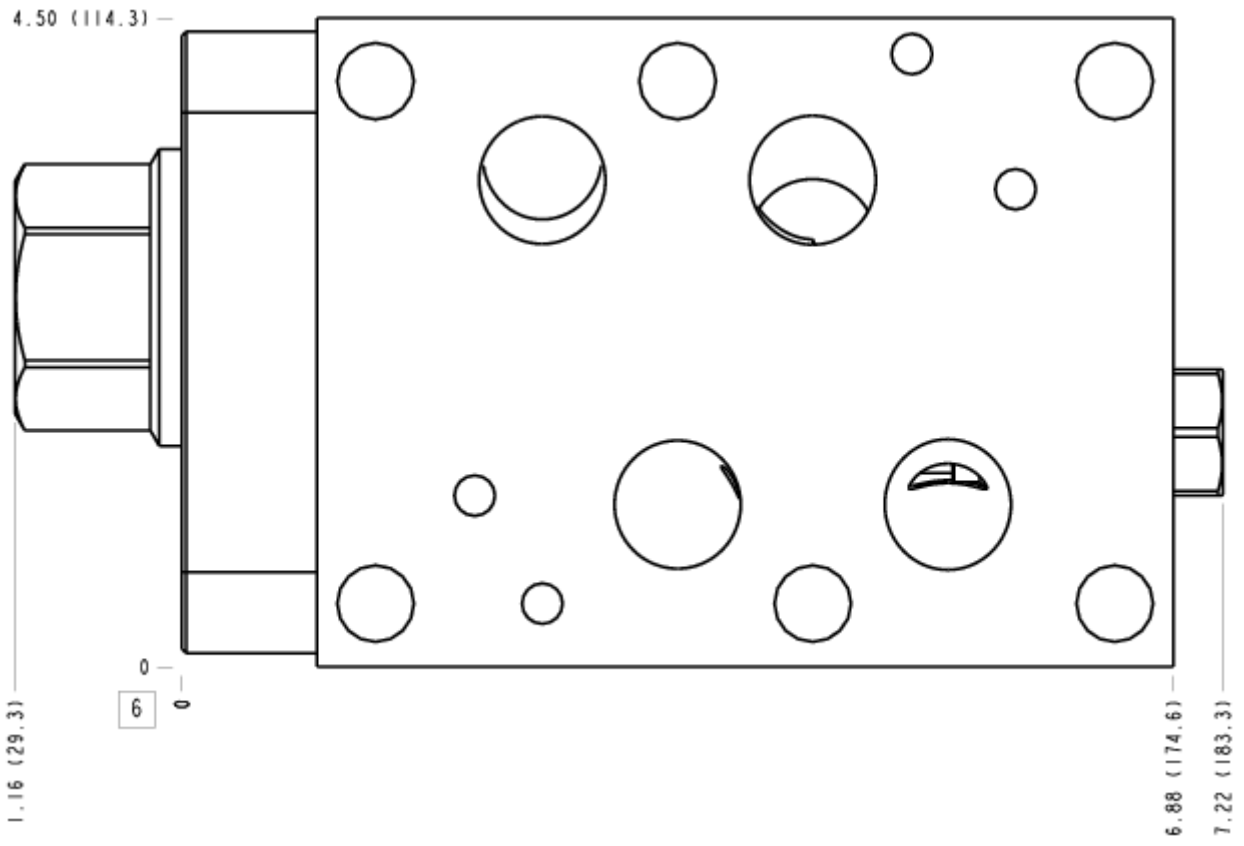
FACE 2



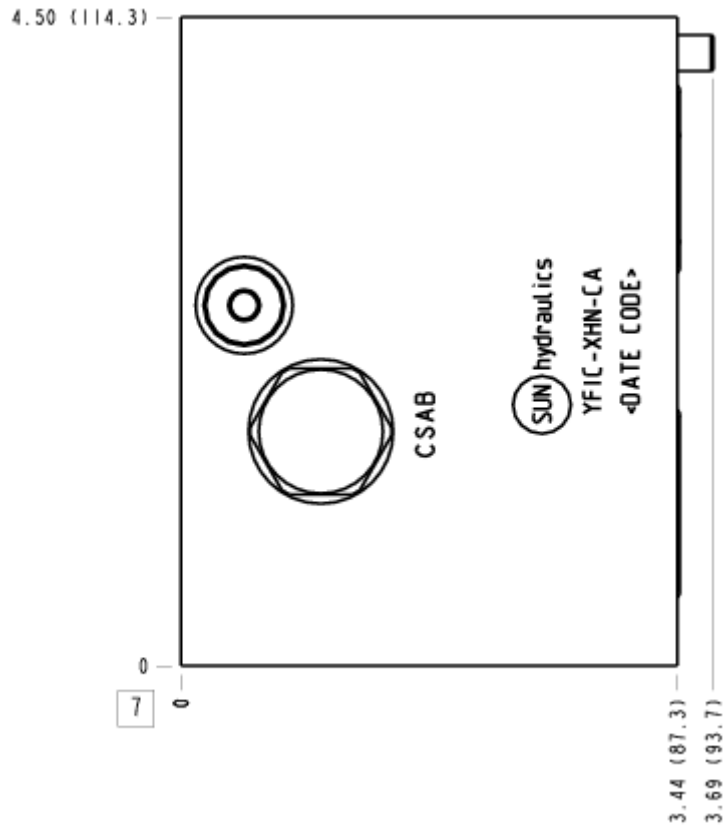
FACE 5



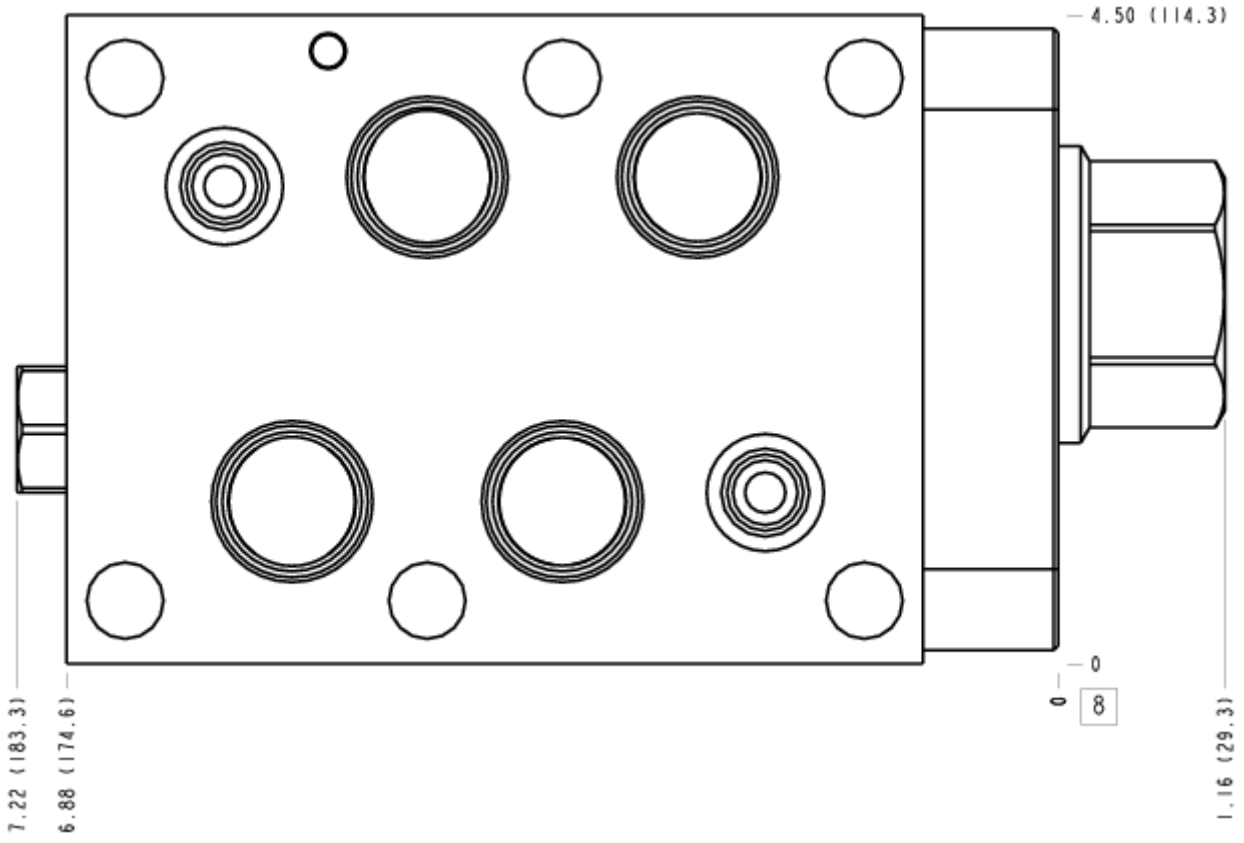
FACE 6



FACE 7



FACE 8



FACE 10

