

TECHNICAL DATA

Body Type	Line mount
Capacity	12 - 60 L/min.
Mounting Hole Thread	.375-16 UNC - 2B in.
Mounting Hole Depth	15,7 mm
Mounting Hole Quantity	4

OPTION SELECTION EXAMPLE: YGDAXANAK

CONTROL	(X) FLOW SPLIT	(A) SEAL MATERIAL	(N)
X Not Adjustable	A 50/50	N Buna-N	
		V Viton	

PRIMARY CARTRIDGE	(A)
A A (with FSDA primary cartridge, Centro cerrado, divisor / combinador de caudal válvula)	

INCLUDED COMPONENTS

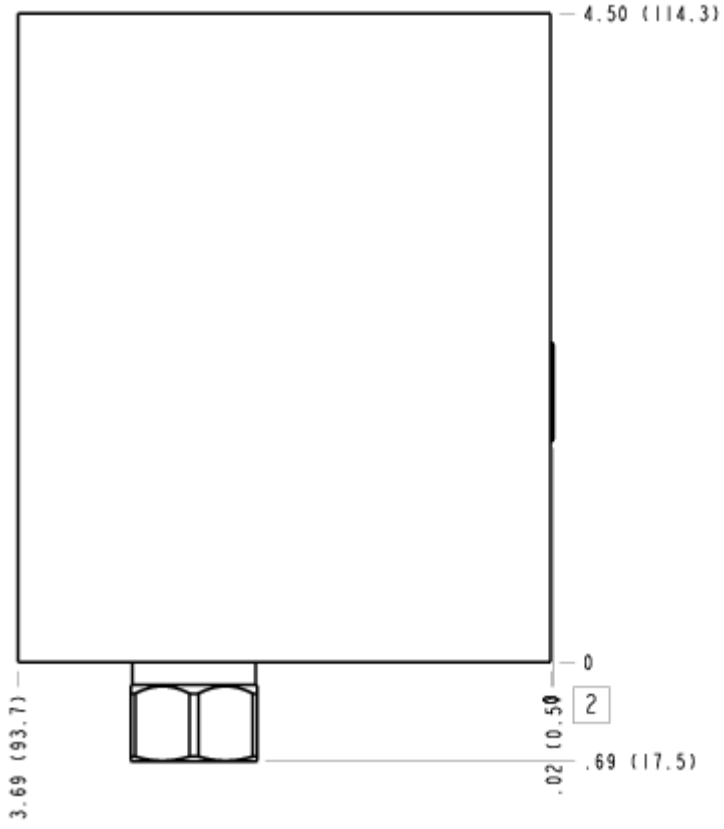
Part	Description	Quantity
A330-006-006*	SAE Plug	2
FSCAXAN	Cartridge	2
FSDAXAN	Cartridge - Primary	1

MANIFOLD FACES

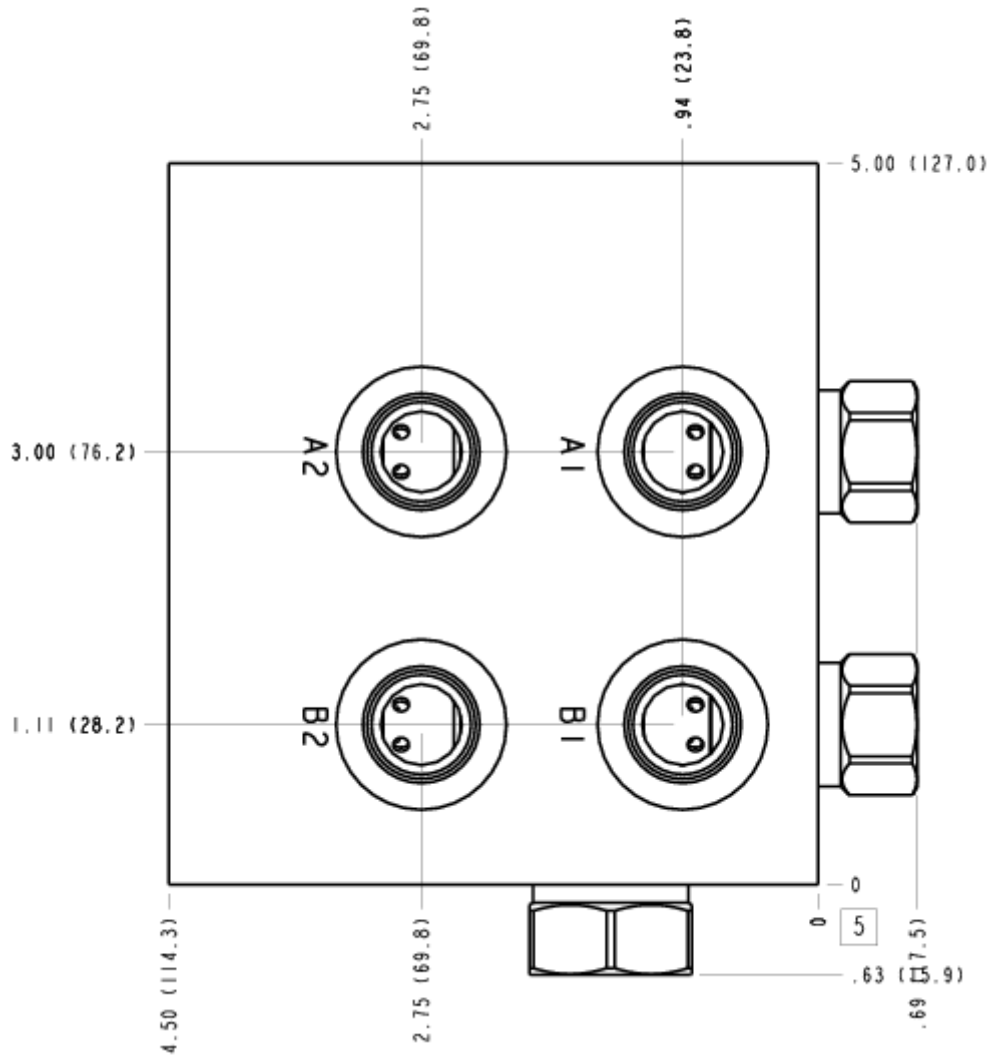
FACE GRID

1	2	3	4
5	6	7	8
9	10	11	12

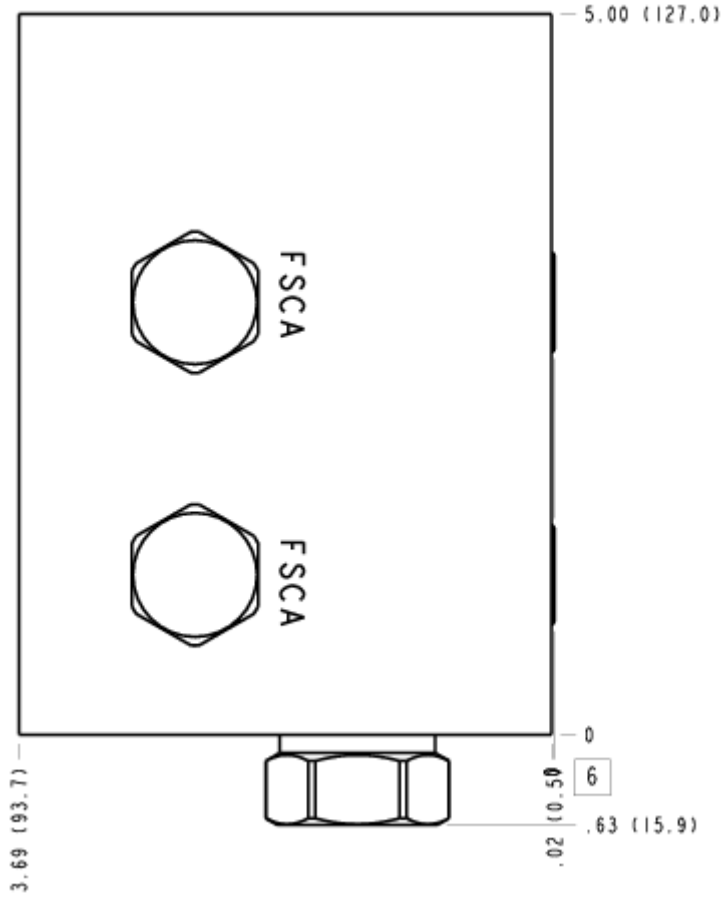
FACE 2



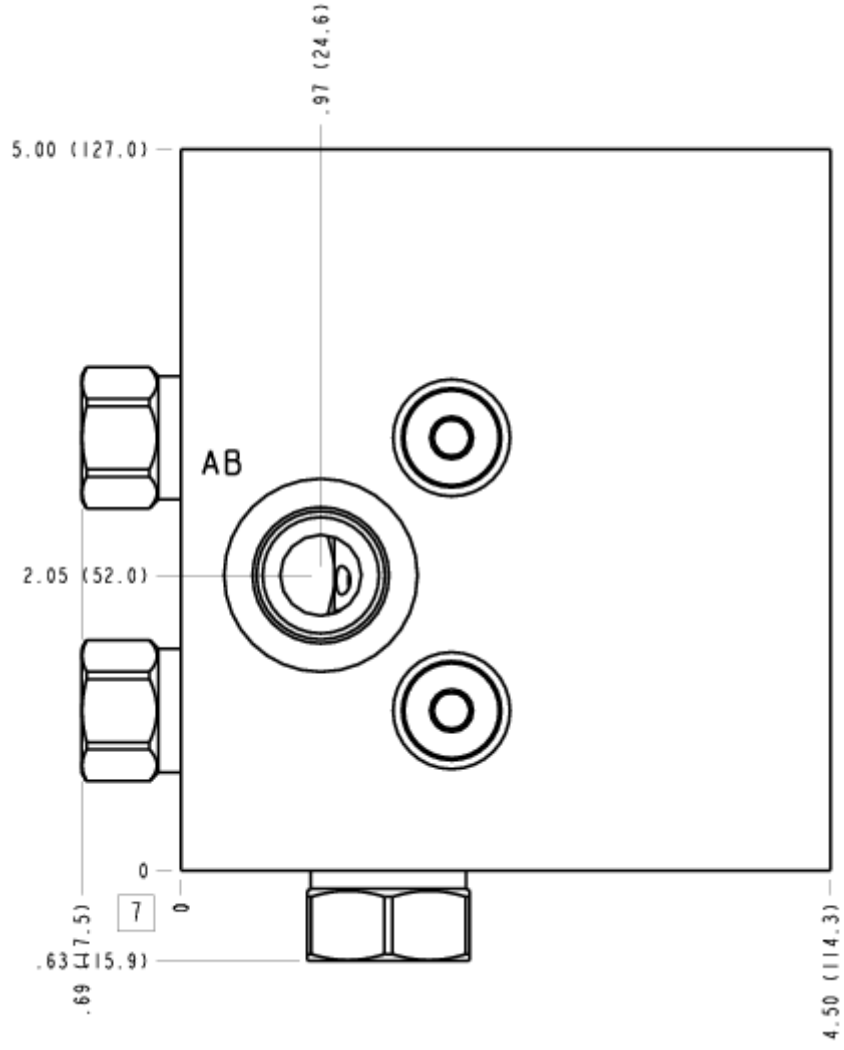
FACE 5



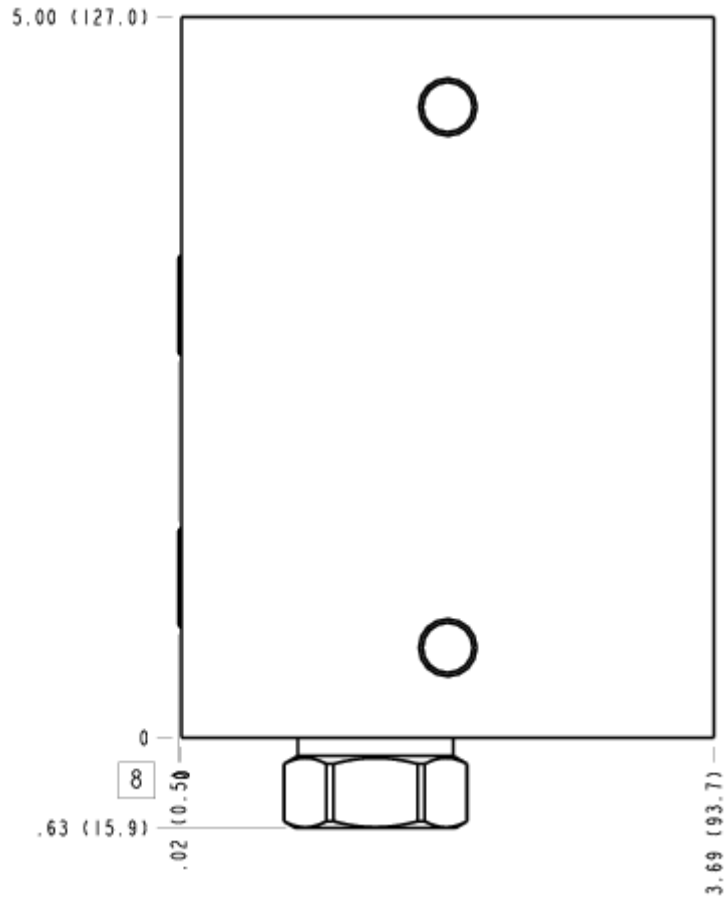
FACE 6



FACE 7



FACE 8



FACE 10

