

TECHNICAL DATA

Body Type	Line mount
Capacity	45 - 240 L/min.
Mounting Hole Thread	.375-16 UNC - 2B in.
Mounting Hole Depth	19 mm
Mounting Hole Quantity	4

OPTION SELECTION EXAMPLE: YGFAXANAJ

CONTROL	(X) FLOW SPLIT	(A) SEAL MATERIAL	(N)
X Not Adjustable	A 50/50	N Buna-N	
		V Viton	

PRIMARY CARTRIDGE	(A)
A 50/50 (with FSFA primary cartridge, Centro cerrado, divisor / combinador de caudal válvula)	

INCLUDED COMPONENTS

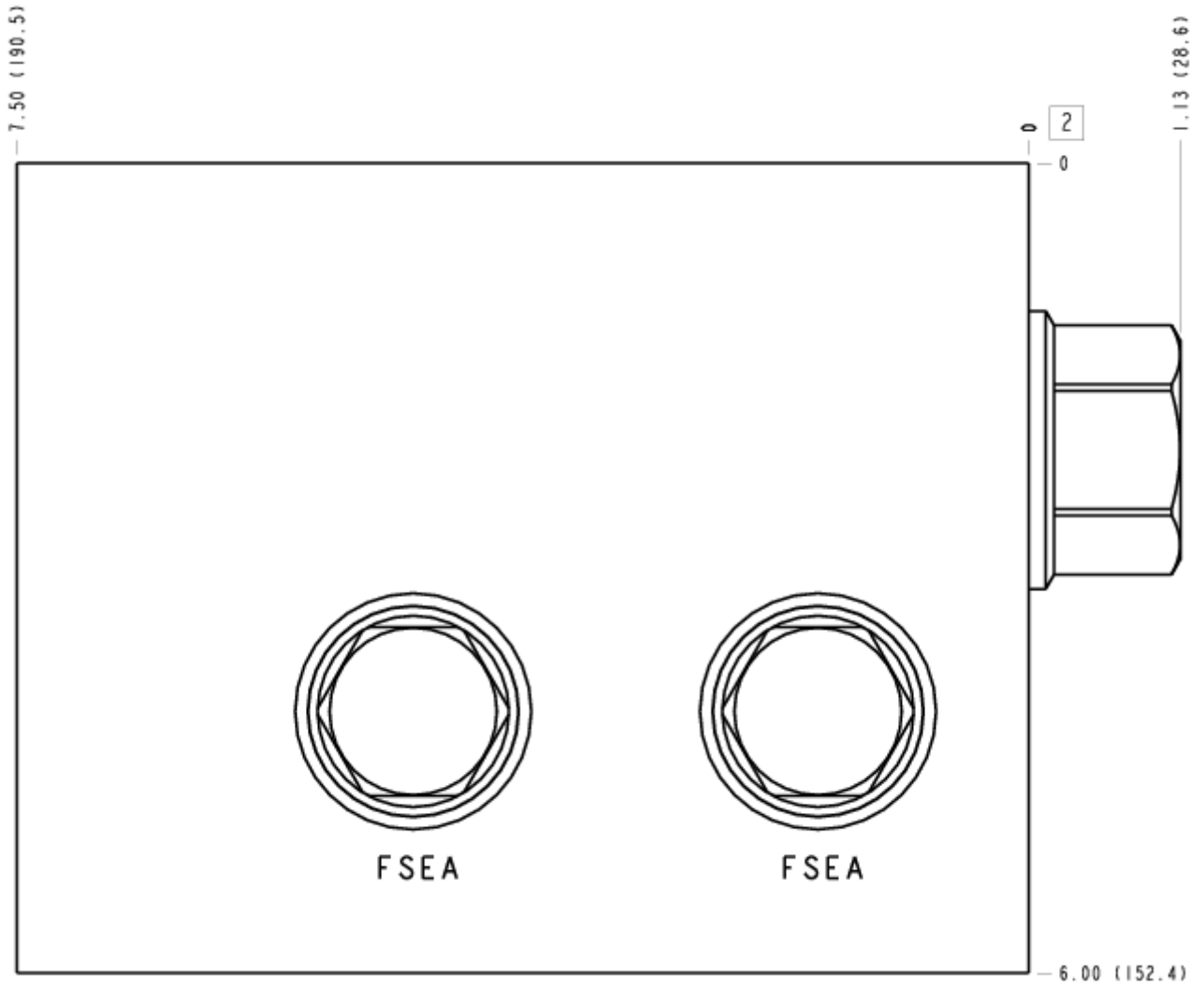
Part	Description	Quantity
A330-006-012*	SAE Plug	2
FSEAXAN	Cartridge	2
FSFAXAN	Cartridge - Primary	1

MANIFOLD FACES

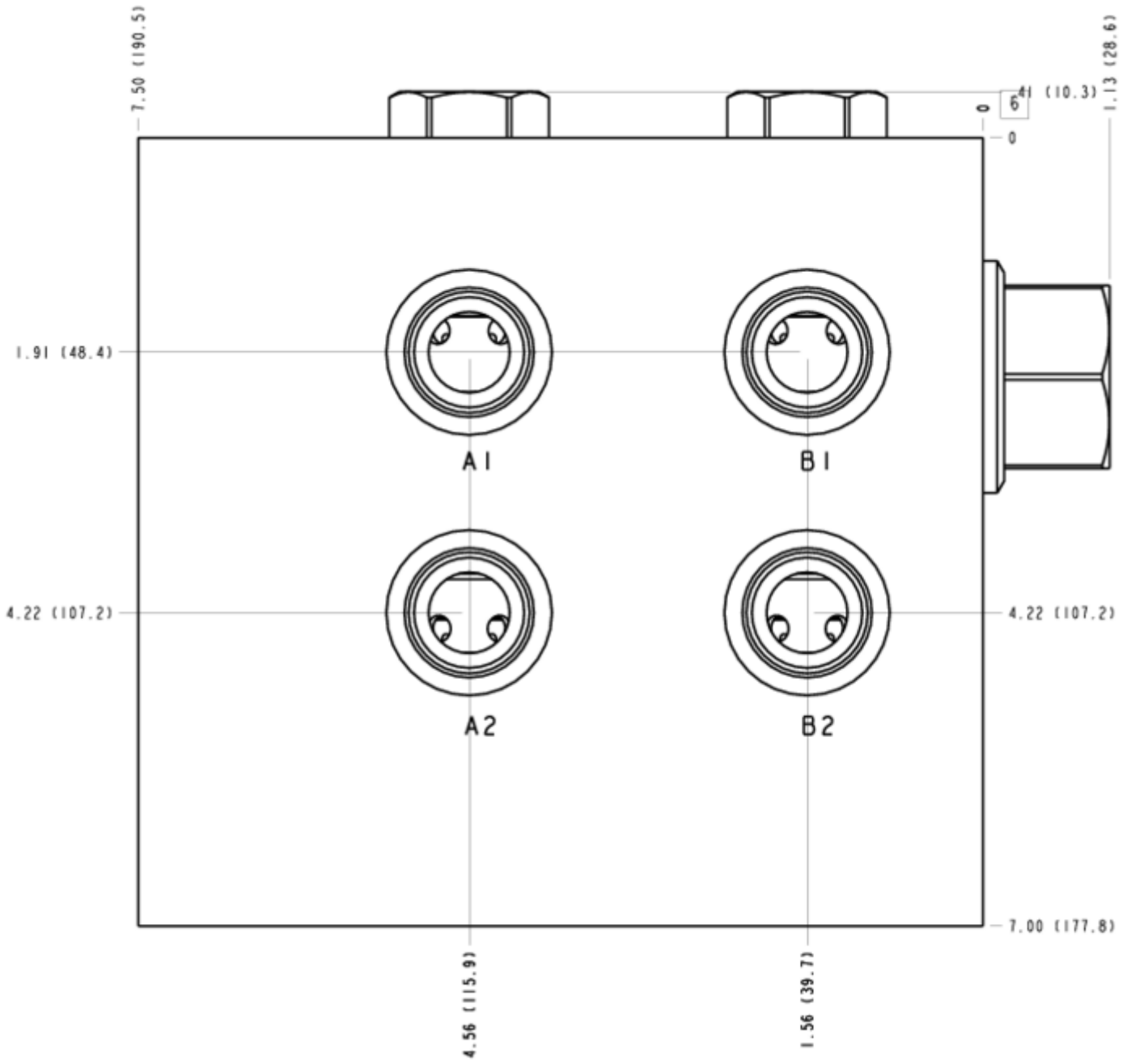
FACE GRID

1	2	3	4
5	6	7	8
9	10	11	12

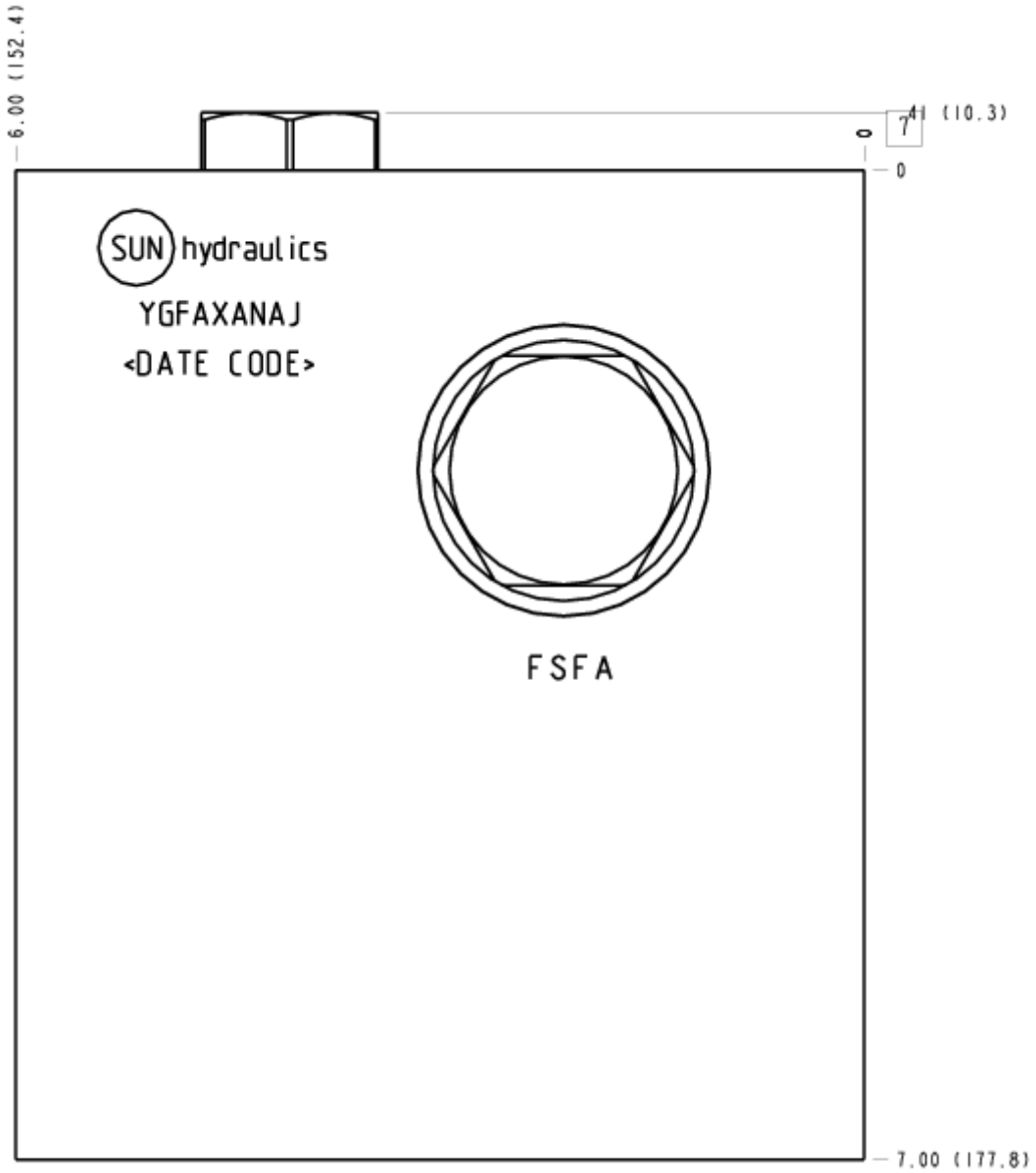
FACE 2



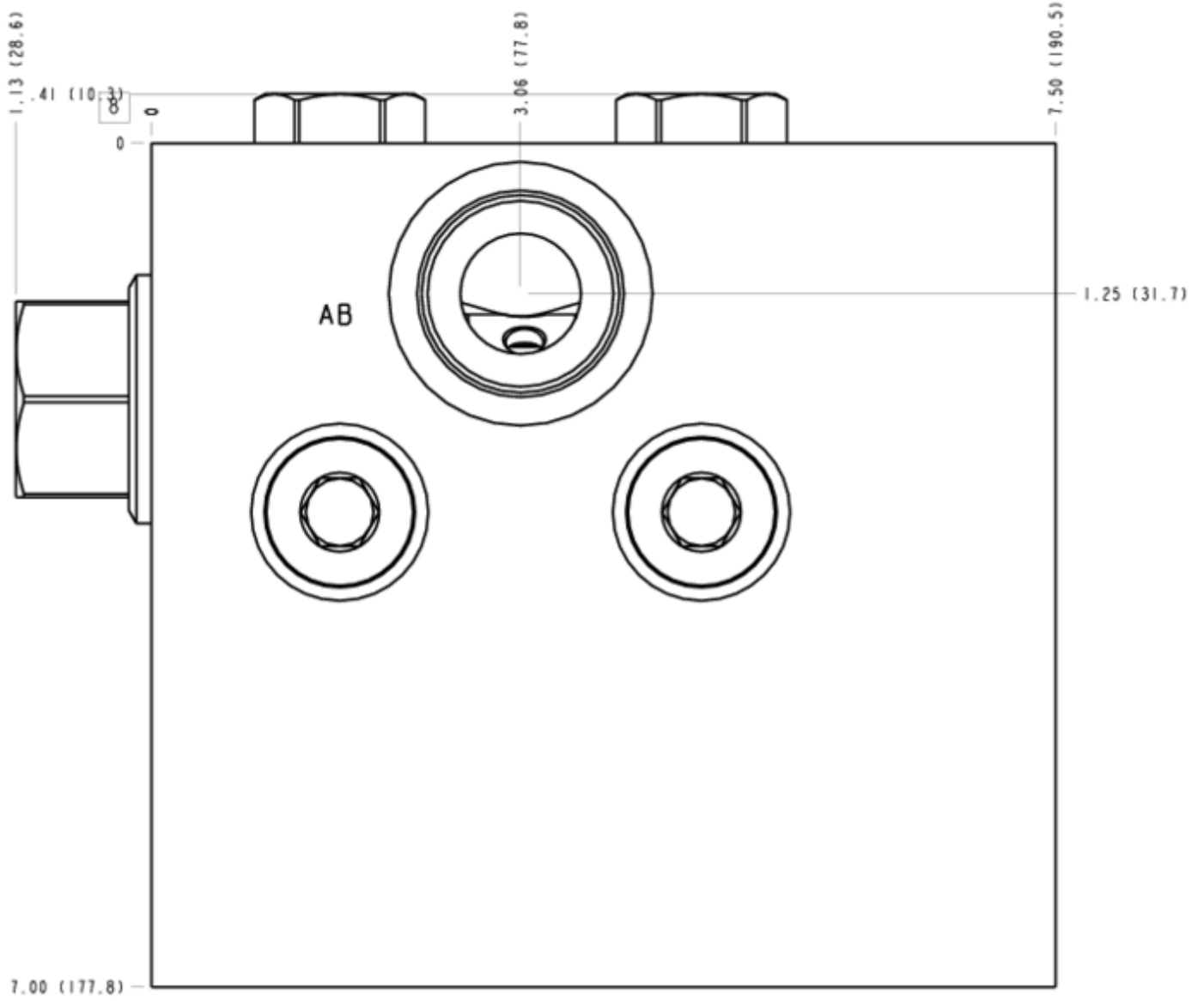
FACE 6



FACE 7



FACE 8



FACE 10

