

## TECHNICAL DATA

Body Type	Line mount
Capacity	60 - 270 L/min.
Mounting Hole Diameter	10,7 mm
Mounting Hole Depth	Through
Mounting Hole Quantity	2



## OPTION SELECTION EXAMPLE: YGFBXANXN

CONTROL	(X)	FLOW SPLIT	(A)	SEAL MATERIAL	(N)	ORIFICE PART DESIGNATION	(X)	PORT AND MATERIAL DESIGNATION	(N)
<b>X</b> Not Adjustable		<b>A</b> 50/50		<b>N</b> Buna-N <b>V</b> Viton		<b>X</b> Slip @ 3000 psi = 36.67 gpm (with FSFH primary cartridge, Alta capacidad , centro cerrado, divisor / combinador de caudal válvula )		<b>N</b> Ports 2, 3, 4 — SAE 20; Gage Ports (Plugged) — SAE 8; Aluminum	
						<b>A</b> Slip @ 3000 psi = 0 gpm (with FSFH primary cartridge, Alta capacidad , centro cerrado, divisor / combinador de caudal válvula )		<b>5</b> Port 3 — 1 1/4 in. Code 62; Ports 2 & 4 — 1" Code 62; Gage Ports (Plugged) — SAE 8; Aluminum	
						<b>T</b> Slip @ 3000 psi = 12.33 gpm (with FSFH primary cartridge, Alta capacidad , centro cerrado, divisor / combinador de caudal válvula )		<b>5/M</b> Port 3 — 1 1/4 in. Code 62; Ports 2 & 4 — 1" Code 62; Gage Ports (Plugged) — SAE 8; Metric Aluminum	
						<b>Y</b> Slip @ 3000 psi = 64.85 gpm (with FSFH primary cartridge, Alta capacidad , centro cerrado, divisor / combinador de caudal válvula )		<b>5/S</b> Port 3 — 1 1/4 in. Code 62; Ports 2 & 4 — 1" Code 62; Gage Ports (Plugged) — SAE 8; Iron	
						<b>Z</b> No Orifice Plug Installed (with FSFH primary cartridge, Alta capacidad , centro cerrado, divisor / combinador de caudal válvula )		<b>5/T</b> Port 3 — 1 1/4 in. Code 62; Ports 2 & 4 — 1" Code 62; Gage Ports (Plugged) — SAE 8; Metric Iron	
								<b>E</b> Ports 2, 3, 4 — 1" NPTF; Gage Ports (Plugged) — SAE 8; Aluminum	
								<b>E/S</b> Ports 2, 3, 4 — 1" NPTF; Gage Ports (Plugged) — SAE 8; Iron	
								<b>F</b> Ports 2, 3, 4 — 1 1/4" NPTF; Gage Ports (Plugged) — SAE 8; Aluminum	
								<b>F/S</b> Ports 2, 3, 4 — 1 1/4" NPTF; Gage Ports (Plugged) — SAE 8; Iron	
								<b>M</b> Ports 2, 3, 4 — SAE 16; Gage Ports (Plugged) — SAE 8; Aluminum	
								<b>M/S</b> Ports 2, 3, 4 — SAE 16; Gage Ports (Plugged) — SAE 8; Iron	
								<b>NS</b> Ports 2, 3, 4 — SAE 20; Gage Ports (Plugged) — SAE 8; Iron	
								<b>Q</b> Port 3 — 1 1/4" Code 61 ; Ports 2 & 4 — 1" Code 61; Gage Ports (Plugged) — SAE 8; Aluminum	

**PORT AND MATERIAL DESIGNATION (N)**

<b>Q/M</b>	Port 3 — 1 1/4" Code 61 ; Ports 2 & 4 — 1" Code 61; Gage Ports (Plugged) — SAE 8; Metric Aluminum
<b>Q/S</b>	Port 3 — 1 1/4" Code 61 ; Ports 2 & 4 — 1" Code 61; Gage Ports (Plugged) — SAE 8; Iron
<b>Q/T</b>	Port 3 — 1 1/4" Code 61 ; Ports 2 & 4 — 1" Code 61; Gage Ports (Plugged) — SAE 8; Metric Iron
<b>X</b>	Ports 2, 3, 4 — 1" BSPP; Gage Ports (Plugged) — SAE 8; Aluminum
<b>X/S</b>	Ports 2, 3, 4 — 1" BSPP; Gage Ports (Plugged) — SAE 8; Iron
<b>Y</b>	Ports 2, 3, 4 — 1 1/4" BSPP; Gage Ports (Plugged) — SAE 8; Aluminum
<b>Y/S</b>	Ports 2, 3, 4 — 1 1/4" BSPP; Gage Ports (Plugged) — SAE 8; Iron

**INCLUDED COMPONENTS**

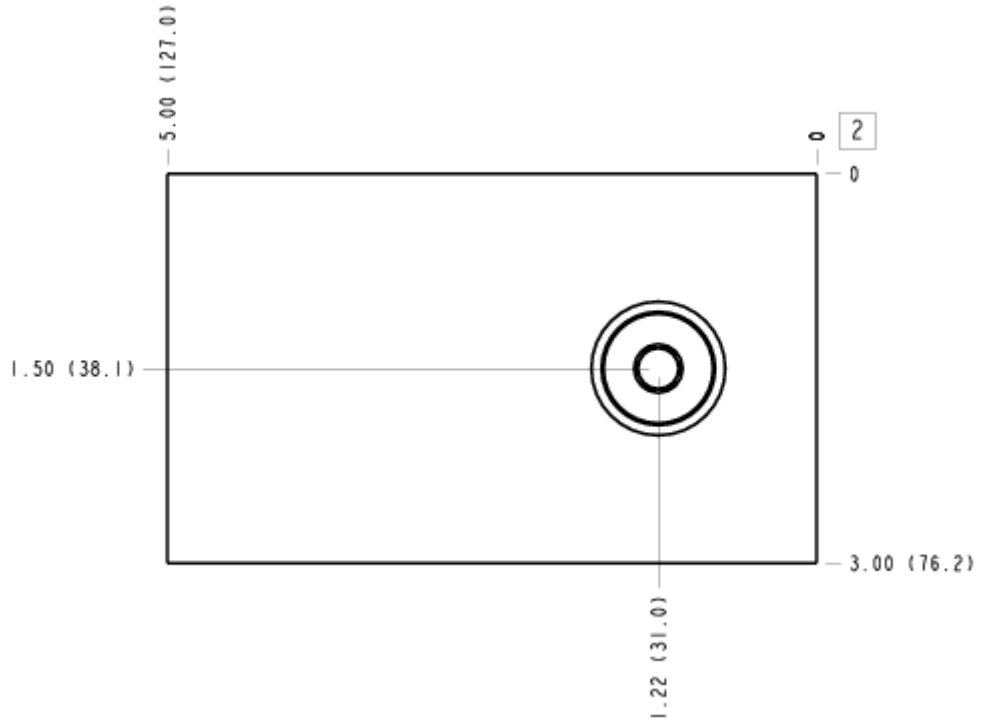
Part	Description	Quantity
280-040-094*	Orifice	2
A330-006-008*	SAE Plug	2
FSFHAN	Cartridge - Primary	1

**MANIFOLD FACES**

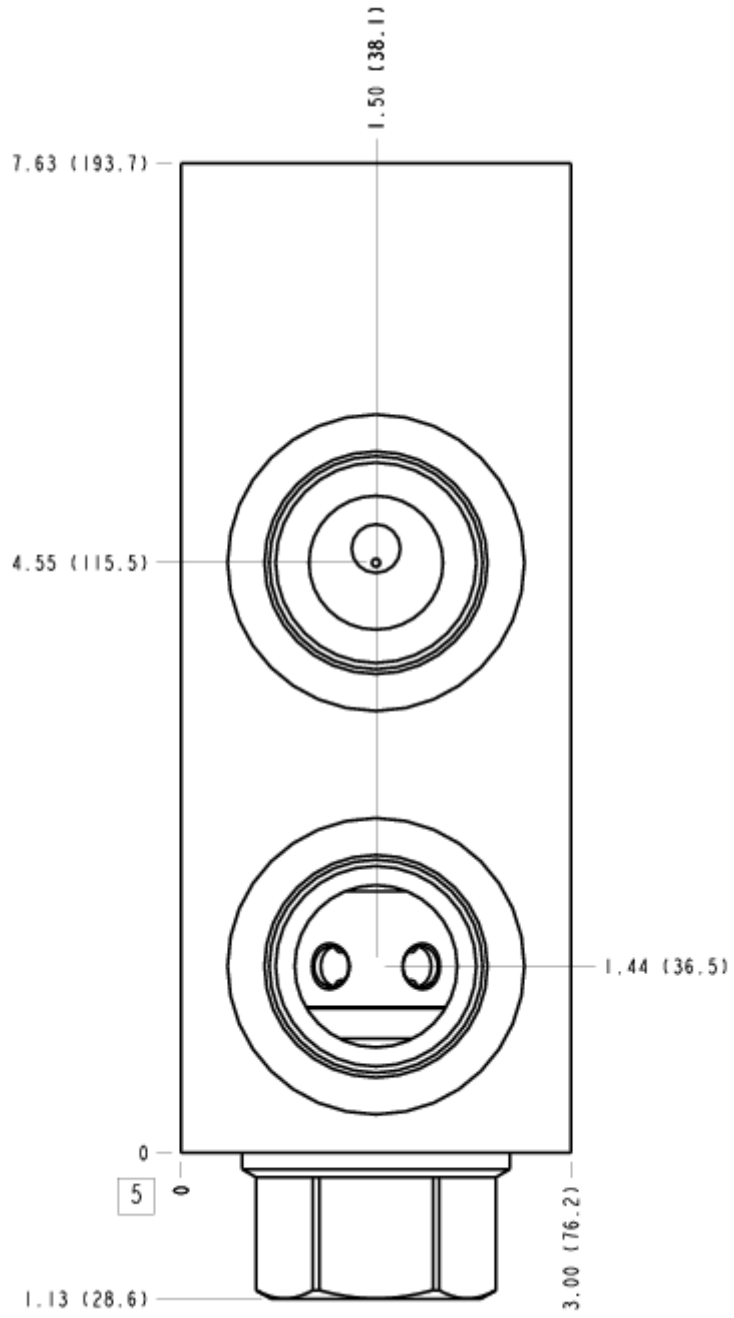
**FACE GRID**

1	2	3	4
5	6	7	8
9	10	11	12

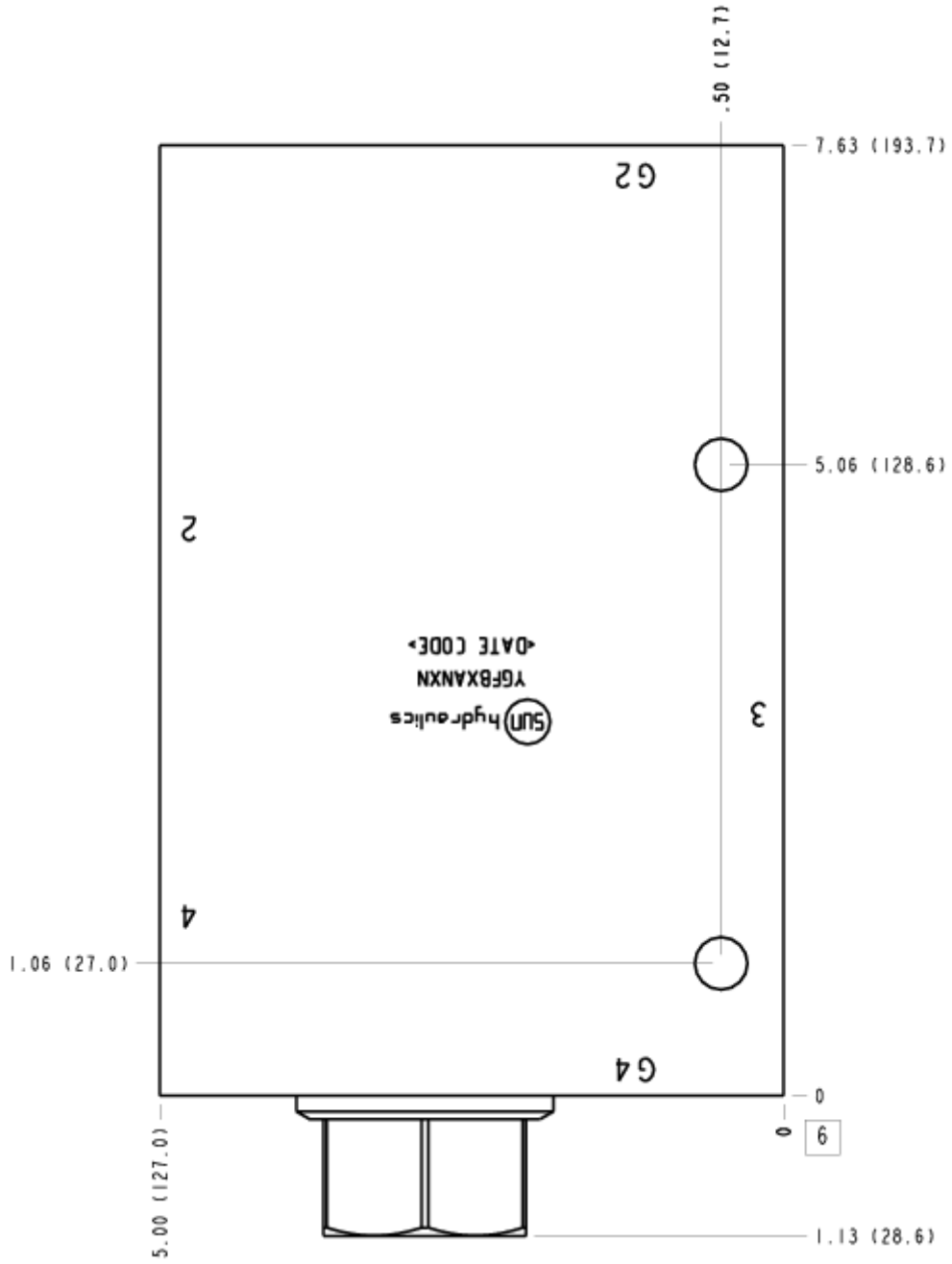
FACE 2



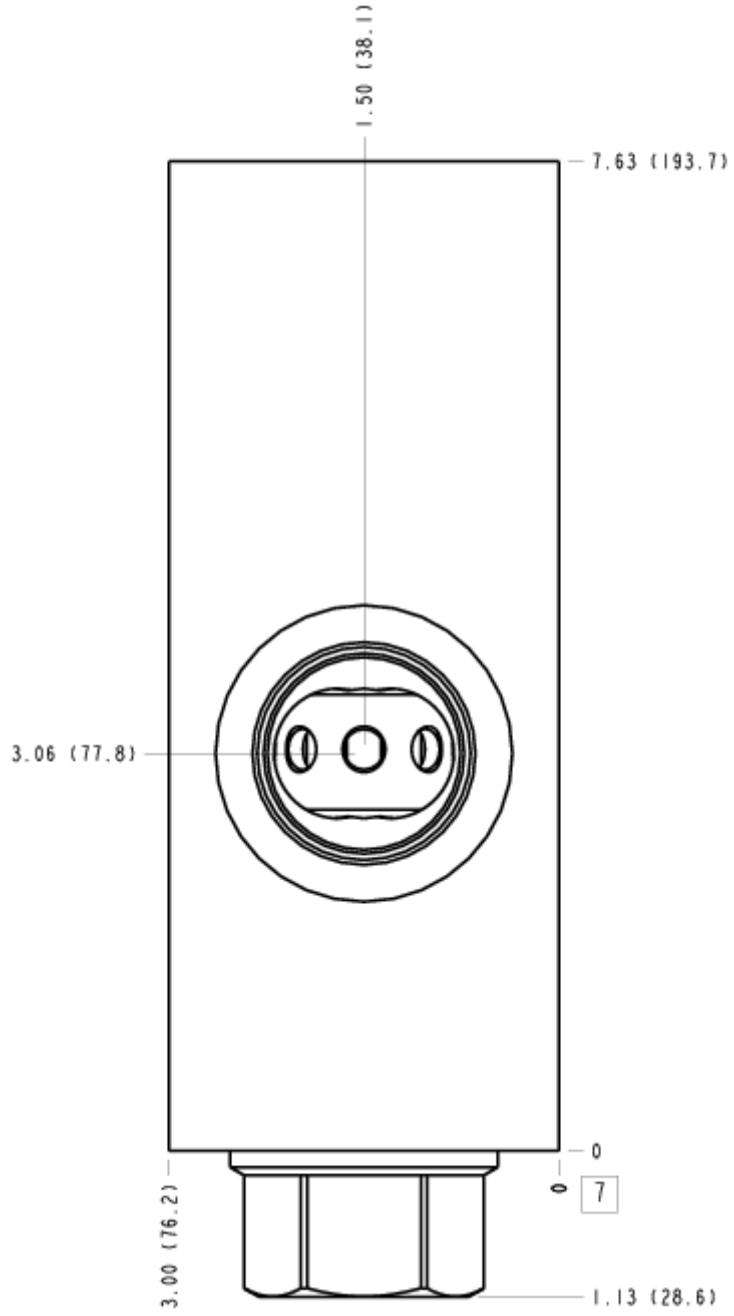
FACE 5



FACE 6

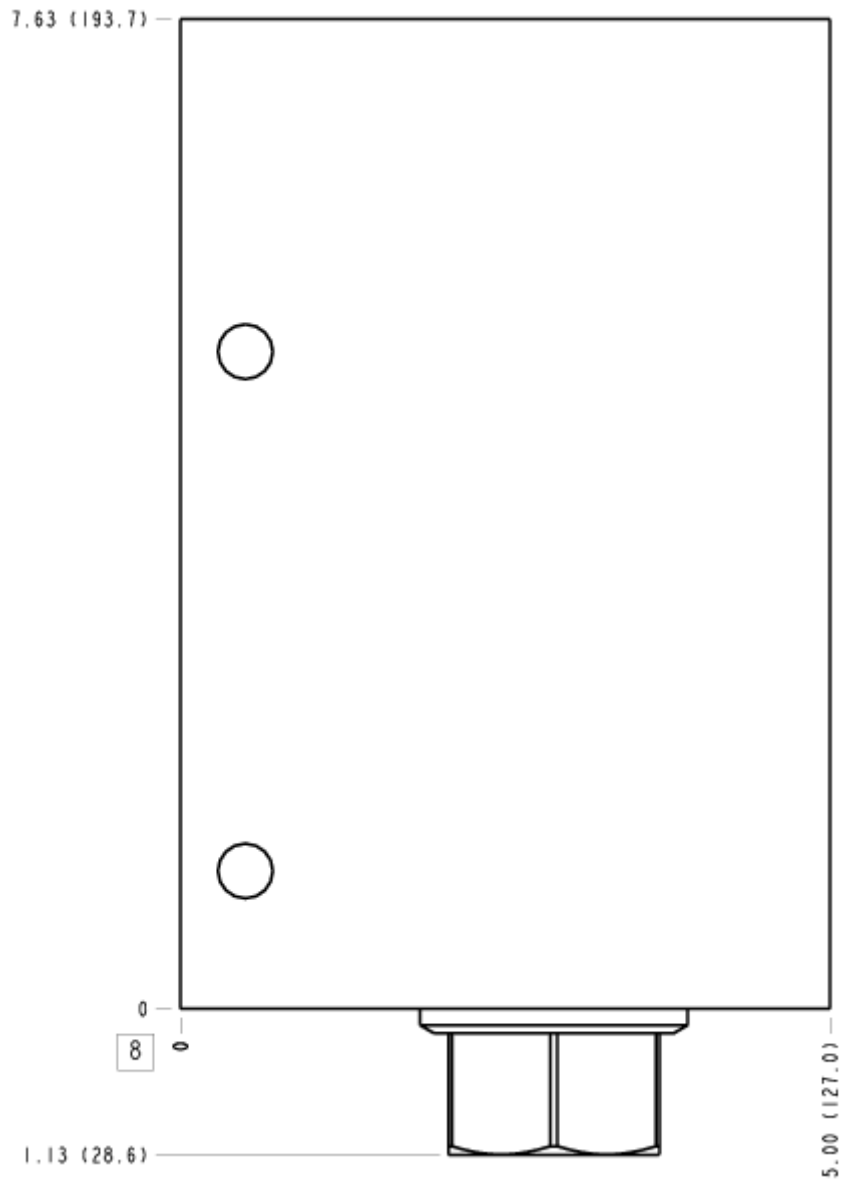


FACE 7





FACE 8



FACE 10

