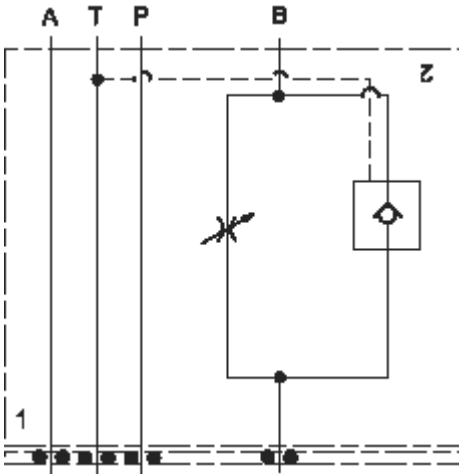


Meter in A

TECHNICAL DATA NOTE: DATA MAY VARY BY CONFIGURATION. SEE CONFIGURATION SECTION.

	ISO 03
	60 L/min.
Stack Height	44,7 mm
()	
	Meter in on A or meter out on B
	5,2 mm
	Through
	4



Meter out B

OPTION SELECTION EXAMPLE: YNCCLCNA

(L)

(C)

(N)

L	C .19 in. (4,8 mm)	N
O	D .09 in. (2,3 mm)	V

PRIMARY CARTRIDGE

(A)

A	A (with NFCB primary cartridge,)
----------	-----------------------------------