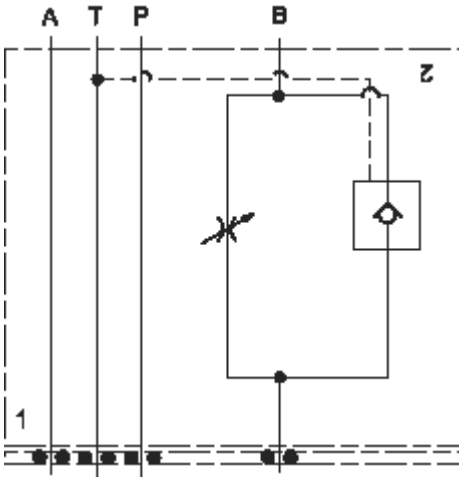


Meter in A



Meter out B

TECHNICAL DATA NOTE: DATA MAY VARY BY CONFIGURATION. SEE CONFIGURATION SECTION.

Body Type	aplilables
Interface	ISO 03
Body Features	Meter in on A or meter out on B
Seal Plate Included (see notes)	Yes
Stack Height	44,7 mm
Mounting Hole Diameter	5,2 mm
Mounting Hole Depth	Through
Mounting Hole Quantity	4

CONFIGURATION OPTIONS

Model Code Example: YNCCLCNAA

CONTROL	(L) MAXIMUM ORIFICE DIAMETER	(C) SEAL MATERIAL	(N)
L Standard Screw Adjustment	C .19 in. (4,8 mm)	N Buna-N	
K manilla	D .09 in. (2,3 mm)	V Viton	
PRIMARY CARTRIDGE			(A)
A A (with NFCB primary cartridge, Totalmente ajustable aguja válvula)			

INCLUDED COMPONENTS

Part	Description	Quantity
500-001-012*	O-Ring	4
700-002*	Seal Plate	1
811-001-006*	Pin	1
850-004-250*	Plug	2
CKCBXCN	Cartridge	1
NFCBLCN	Cartridge - Primary	1