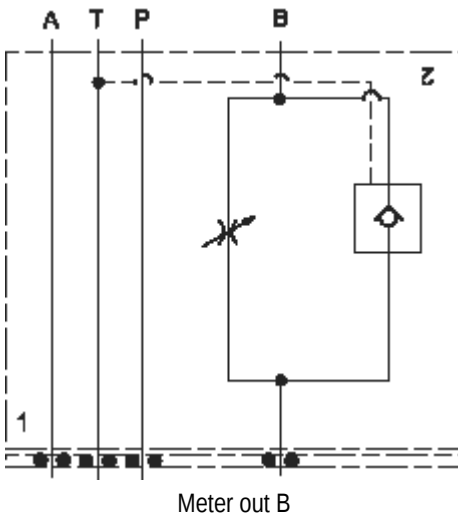
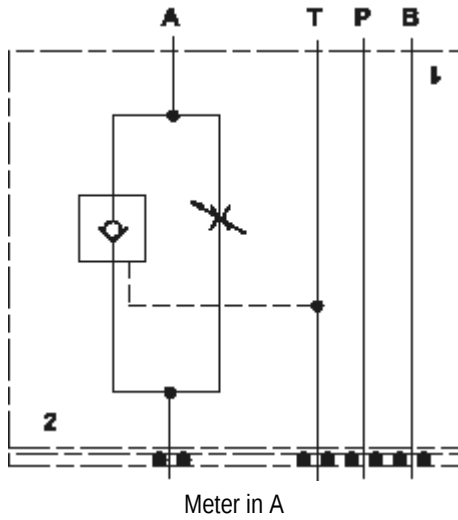




This assembly consists of a fully-adjustable, pressure-compensated flow control with reverse-flow check which provides precise flow regulation for meter-in or meter-out applications where there may be wide pressure fluctuations. It is infinitely adjustable from nearly closed up to the maximum flow. An integral high-capacity check valve provides unrestricted flow in the reverse direction. The rapid or feed rate is selected by a vented, pilot-to-open check valve with an external pilot port.

TECHNICAL DATA NOTE: DATA MAY VARY BY CONFIGURATION. SEE CONFIGURATION SECTION.

Body Type	Sandwich
Interface	ISO 03
Capacity	15 gpm
Body Features	Meter in on A or meter out on B
Seal Plate Included (see notes)	Yes
Stack Height	1.76 in.
Mounting Hole Diameter	.20 in.
Mounting Hole Depth	Through
Mounting Hole Quantity	4



- NOTES:**
- Customer to install locating pin (included) for functional orientation desired.
 - Stack height value in technical data table includes seal retainer plate.
 - For detailed information regarding the cartridges contained in this assembly, click on the models codes shown in the Included Components tab.
 - **Important:** Carefully consider the maximum system pressure. The pressure rating of the manifold is dependent on the manifold material, with the port type/size a secondary consideration. Manifolds constructed of aluminum are not rated for pressures higher than 3000 psi (210 bar), regardless of the port type/size specified.

OPTION SELECTION EXAMPLE: YNCCLCNA

CONTROL	(L) MAXIMUM ORIFICE DIAMETER	(C) SEAL MATERIAL	(N)
L Standard Screw Adjustment	C .19 in. (4,8 mm)	N Buna-N	
K Handknob	D .09 in. (2,3 mm)	V Viton	

PRIMARY CARTRIDGE (A)

A A (with NFCB primary cartridge, Fully adjustable needle valve)

INCLUDED COMPONENTS

Part	Description	Quantity
500-001-012*	O-Ring	4
700-002*	Seal Plate	1
811-001-006*	Pin	1
850-004-250*	Plug	2
CKCBXCN	Cartridge	1
NFCBLCN	Cartridge - Primary	1