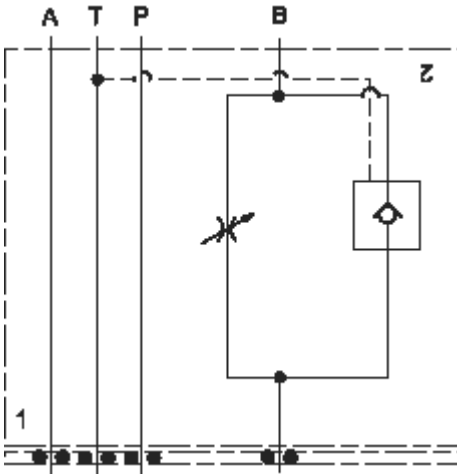


Meter in A

### TECHNICAL DATA

Body Type	Sandwich
Interface	ISO 03
Capacity	60 L/min.
Body Features	Meter in on A or meter out on B
Seal Plate Included (see notes)	Yes
Stack Height	44,7 mm
Mounting Hole Diameter	5,2 mm
Mounting Hole Depth	Through
Mounting Hole Quantity	4



Meter out B

**OPTION SELECTION EXAMPLE: YNCCLCNA**

CONTROL	(L) MAXIMUM ORIFICE DIAMETER	(C) SEAL MATERIAL	(N)
<b>L</b> Standard Screw Adjustment	<b>C</b> .19 in. (4,8 mm)	<b>N</b> Buna-N	
	<b>D</b> .09 in. (2,3 mm)	<b>V</b> Viton	

**PRIMARY CARTRIDGE** (A)

<b>A</b> A (with NFCB primary cartridge, Totalmente ajustable aguja válvula )
---

**INCLUDED COMPONENTS**

Part	Description	Quantity
500-001-012*	O-Ring	4
700-002*	Seal Plate	1
811-001-006*	Pin	1
850-004-250*	Plug	2
CKCBXCN	Cartridge	1
NFCBLCN	Cartridge - Primary	1