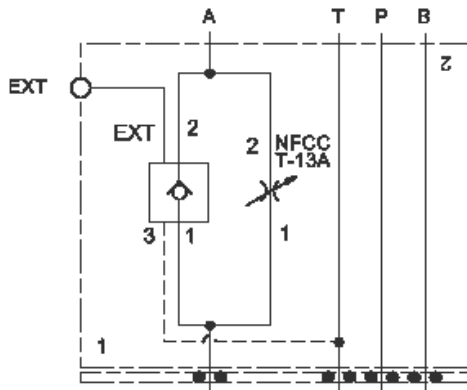


Meter in B



Meter out A

TECHNICAL DATA NOTE: DATA MAY VARY BY CONFIGURATION. SEE CONFIGURATION SECTION.

Body Type	apilables
Interface	ISO 03
Capacity	60 L/min.
Body Features	Meter in on B or meter out on A
Control Flow Range	0 - 7 gpm
Seal Plate Included (see notes)	Yes
Stack Height	44,5 mm

OPTION SELECTION EXAMPLE: YNCELCNA

CONTROL		(L) MAXIMUM ORIFICE DIAMETER	(C) SEAL MATERIAL	(N)	
L	Standard Screw Adjustment	C	.19 in. (4,8 mm)	N	Buna-N
H	Calibrated Handknob with Detent Lock	D	.09 in. (2,3 mm)	V	Viton
K	manilla				
PRIMARY CARTRIDGE				(A)	
A	A (with NFCC primary cartridge, Totalmente ajustable aguja válvula.)				

INCLUDED COMPONENTS

Part	Description	Quantity
500-001-012*	O-Ring	4
700-002*	Seal Plate	1
811-001-006*	Pin	1
850-004-250*	Plug	2
CKCHVCN	Cartridge	1
NFCCLCN	Cartridge - Primary	1