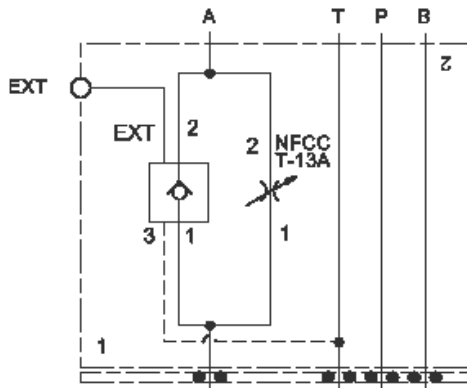


Meter in B



Meter out A

TECHNICAL DATA NOTE: DATA MAY VARY BY CONFIGURATION. SEE CONFIGURATION SECTION.

	ISO 03
	60 L/min.
Stack Height	44,5 mm
()	
	0 - 7 gpm
	Meter in on B or meter out on A

OPTION SELECTION EXAMPLE: YNCELNAA

(L)

(C)

(N)

L	C .19 in. (4,8 mm)	N
H	D .09 in. (2,3 mm)	V
K		

PRIMARY CARTRIDGE

(A)

A	A (with NFCC primary cartridge,)
----------	-----------------------------------

INCLUDED COMPONENTS

Part	Description	Quantity
500-001-012*	O-Ring	4
700-002*	Seal Plate	1
811-001-006*	Pin	1
850-004-250*	Plug	2
CKCHVCN	Cartridge	1
NFCCLCN	Cartridge - Primary	1