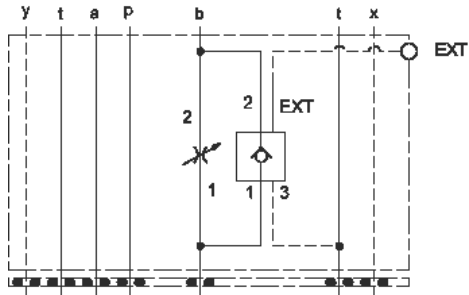


Meter in A



Meter out B

TECHNICAL DATA

Body Type	Sandwich
Interface	ISO 05 - X&Y
Capacity	120 L/min.
Body Features	Meter in on A or meter out on B
Control Flow Range	0 - 12 gpm
Seal Plate Included (see notes)	Yes
Stack Height	63 mm

OPTION SELECTION EXAMPLE: YNEMLANBB

CONTROL	(L) MAXIMUM ORIFICE DIAMETER	(A) SEAL MATERIAL	(N)
L Standard Screw Adjustment	A .25 in. (6,4 mm)	N Buna-N	
Y manilla de tres agarres	B .12 in. (3,0 mm)	V Viton	

PRIMARY CARTRIDGE (B)

B B (with NFDC primary cartridge, Totalmente ajustable aguja válvula)

INCLUDED COMPONENTS

Part	Description	Quantity
340-002*	Pipe Plug	1
CKEHVCN	Cartridge	1
NFDCLAN	Cartridge - Primary	1