

### CONFIGURATION

L	Control	Standard Screw Adjustment
A	Adjustment Range	100 - 3000 psi (7 - 210 bar), 200 psi (14 bar) Standard Setting
N	Seal Material	Buna-N
F	Solenoid Designation	740 Coil-Normally Open (with PVDA primary cartridge, Pilot-operated, pressure reducing/relieving valve with drain to port 4)
A	Port and Material Designation	A Aluminum
224	Coil	DIN 43650 4 pin (Hirschman) 24 VDC

This assembly consists of a pilot-operated pressure reducing/relieving valve with a separate drain (port 4) which reduces a high primary pressure at the inlet (port 2) to a constant reduced pressure at port 1, with a full-flow relief function from port 1 to tank (port 3). Draining the pilot section

at port 4 makes these valves insensitive to pressure at tank (port 3) and provides a means for remote control by pilot or 2-way valves. The 2-way, 2-position solenoid operated valve (normally open or closed) on the drain (port 4) allows the selection of turning the reducing/relieving function on or off.

### TECHNICAL DATA NOTE: DATA MAY VARY BY CONFIGURATION. SEE CONFIGURATION SECTION.

Body Type	Sandwich
Interface	ISO 03
Capacity	10 gpm
Body Features	On P
Seal Plate Included (see notes)	Yes
Stack Height	1.75 in.

- NOTES:**
- Stack height value in technical data table includes seal retainer plate.
  - For detailed information regarding the cartridges contained in this assembly, click on the models codes shown in the Included Components tab.
  - Important:** Carefully consider the maximum system pressure. The pressure rating of the manifold is dependent on the manifold material, with the port type/size a secondary consideration. Manifolds constructed of aluminum are not rated for pressures higher than 3000 psi (210 bar), regardless of the port type/size specified.

**OPTION SELECTION EXAMPLE: YPCILANFA224**

CONTROL	(L) ADJUSTMENT RANGE	(A) SEAL MATERIAL	(N)
<b>L</b> Standard Screw Adjustment	<b>A</b> 100 - 3000 psi (7 - 210 bar), 200 psi (14 bar) Standard Setting	<b>N</b> Buna-N	
<b>C</b> Tamper Resistant - Factory Set	<b>B</b> 50 - 1500 psi (3,5 - 105 bar), 200 psi (14 bar) Standard Setting	<b>V</b> Viton	
<b>K</b> Handknob	<b>D</b> 25 - 800 psi (1,7 - 55 bar), 200 psi (14 bar) Standard Setting		
<b>W</b> Hex Wrench Adjustment	<b>E</b> 25 - 400 psi (1,7 - 28 bar), 200 psi (14 bar) Standard Setting		
<b>Y</b> Tri-Grip Handknob	<b>N</b> 60 - 800 psi (4 - 55 bar), 200 psi (14 bar) Standard Setting		
	<b>Q</b> 60 - 400 psi (4 - 28 bar), 200 psi (14 bar) Standard Setting		
	<b>W</b> 150 - 4500 psi (10,5 - 315 bar), 200 psi (14 bar) Standard Setting		

**INCLUDED COMPONENTS**

Part	Description	Quantity
500-001-012*	O-Ring	4
700-002*	Seal Plate	1
811-001-006*	Pin	1
850-004-156*	Plug	3
850-004-218*	Plug	1
DTAFMHN224	Cartridge	1
PVDALAN	Cartridge - Primary	1

**TECHNICAL FEATURES**

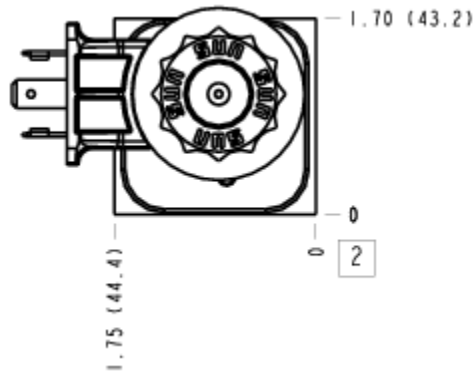
- Pressure on the drain (port 4) is directly additive to the valve setting at a 1:1 ratio and should not exceed 3000 psi (210 bar).
- Pilot operated valves exhibit exceptionally flat pressure/flow characteristics, are very stable and have low hysteresis.
- Now available with FLEx Series solenoid valves. See CONFIGURATION section, SOLENOID DESIGNATION to specify.

# MANIFOLD FACES

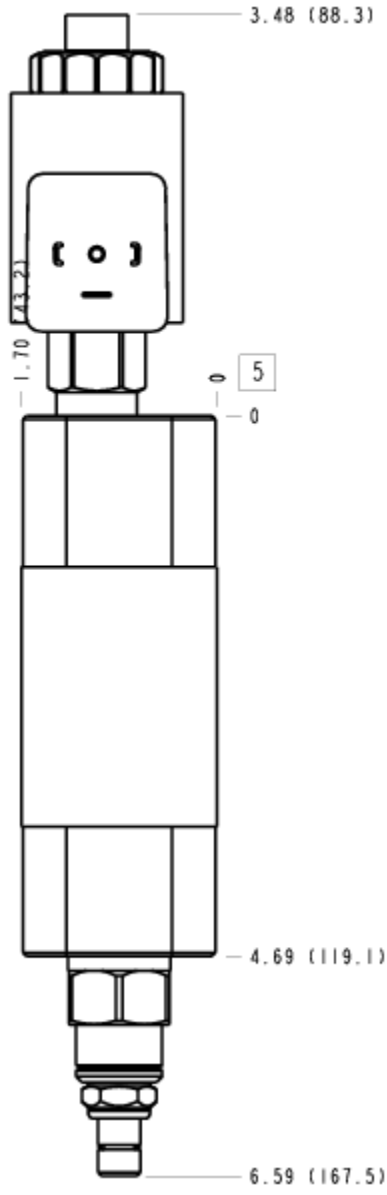
## FACE GRID

1	2	3	4
5	6	7	8
9	10	11	12

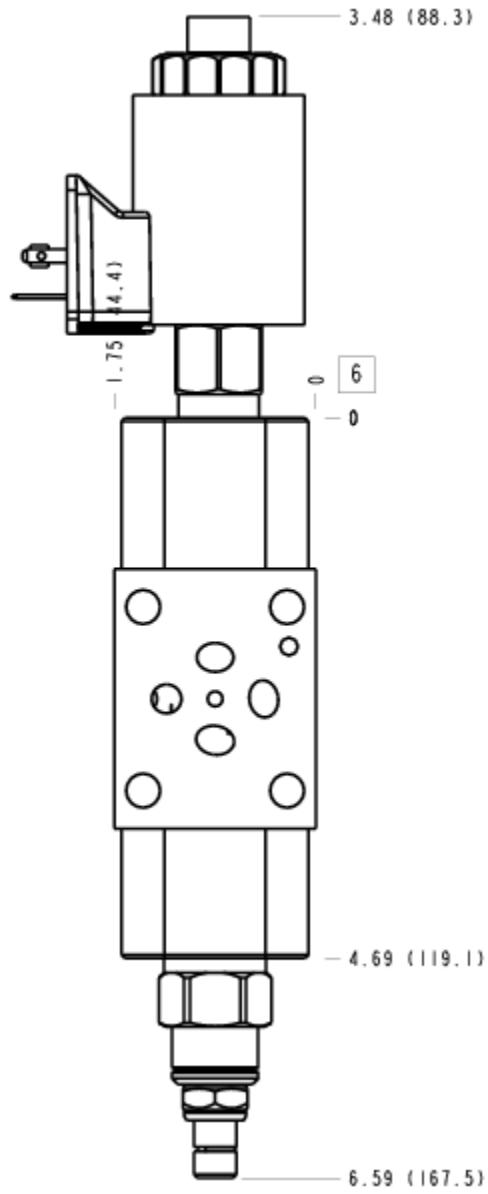
## FACE 2



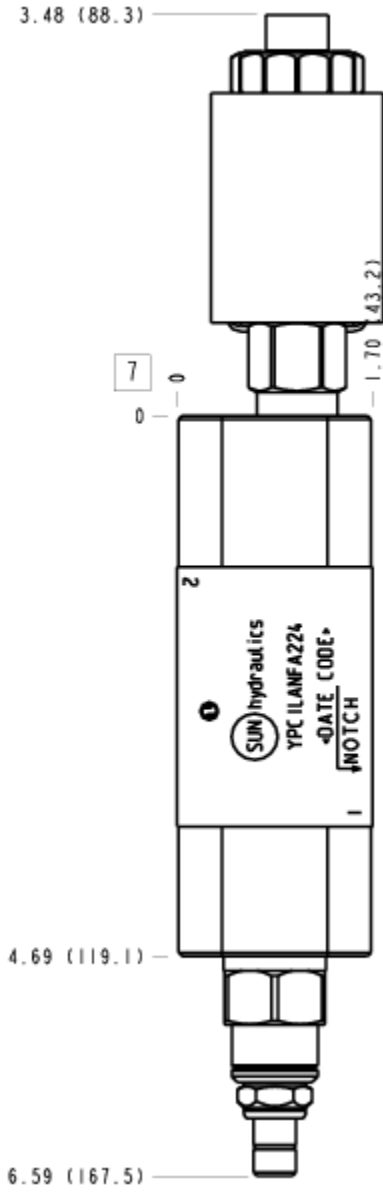
FACE 5



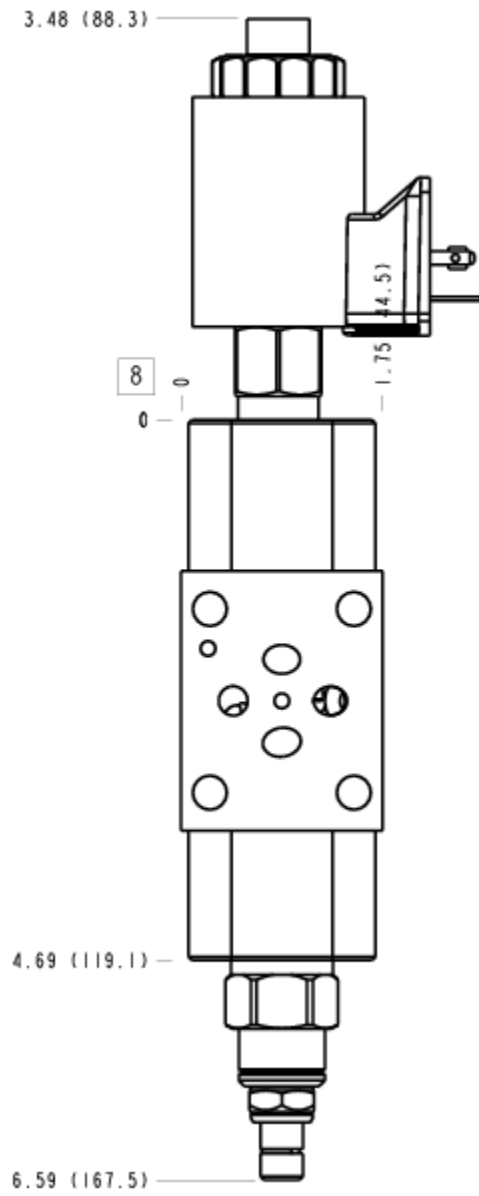
FACE 6



FACE 7



### FACE 8



### FACE 10

