

Body Type	Sandwich
Interface	ISO 03
Capacity	10 gpm
Body Features	On A with reverse flow check
Seal Plate Included (see notes)	Yes
Stack Height	1.76 in.

- 1 of 6

OPTION SELECTION EXAMPLE: YPCSLANAA

CONTROL	(L)	ADJUSTMENT RANGE	(A)	SEAL MATERIAL	(N)
L	Standard Screw Adjustment	A	100 - 3000 psi (7 - 210 bar), 200 psi (14 bar) Standard Setting	N	Buna-N
C	Tamper Resistant - Factory Set	B	50 - 1500 psi (3,5 - 105 bar), 200 psi (14 bar) Standard Setting	V	Viton
K	Handknob	C	150 - 6000 psi (10,5 - 420 bar), 200 psi (14 bar) Standard Setting		
W	Hex Wrench Adjustment	D	25 - 800 psi (1,7 - 55 bar), 200 psi (14 bar) Standard Setting		
Y	Tri-Grip Handknob	E	25 - 400 psi (1,7 - 28 bar), 200 psi (14 bar) Standard Setting		
		N	60 - 800 psi (4 - 55 bar), 200 psi (14 bar) Standard Setting		
		Q	60 - 400 psi (4 - 28 bar), 200 psi (14 bar) Standard Setting		
		W	150 - 4500 psi (10,5 - 315 bar), 200 psi (14 bar) Standard Setting		

PRIMARY CARTRIDGE (A)

A	A (with PPDB primary cartridge, Pilot-operated, pressure reducing/relieving valve)
A	A (with PPDB8 primary cartridge, Pilot-operated, pressure reducing/relieving main stage with integral T-8A control cavity)

INCLUDED COMPONENTS

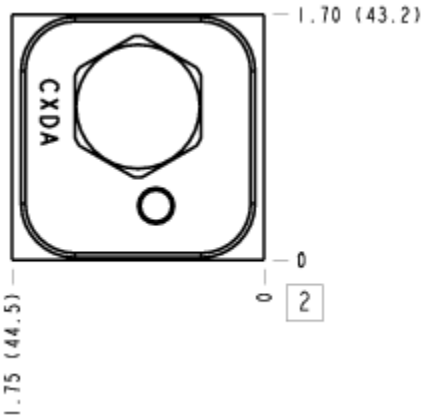
Part	Description	Quantity
500-001-012*	O-Ring	4
700-002*	Seal Plate	1
811-001-006*	Pin	1
850-004-250*	Plug	2
CXDAXCN	Cartridge	1
PPDBLAN	Cartridge - Primary	1

MANIFOLD FACES

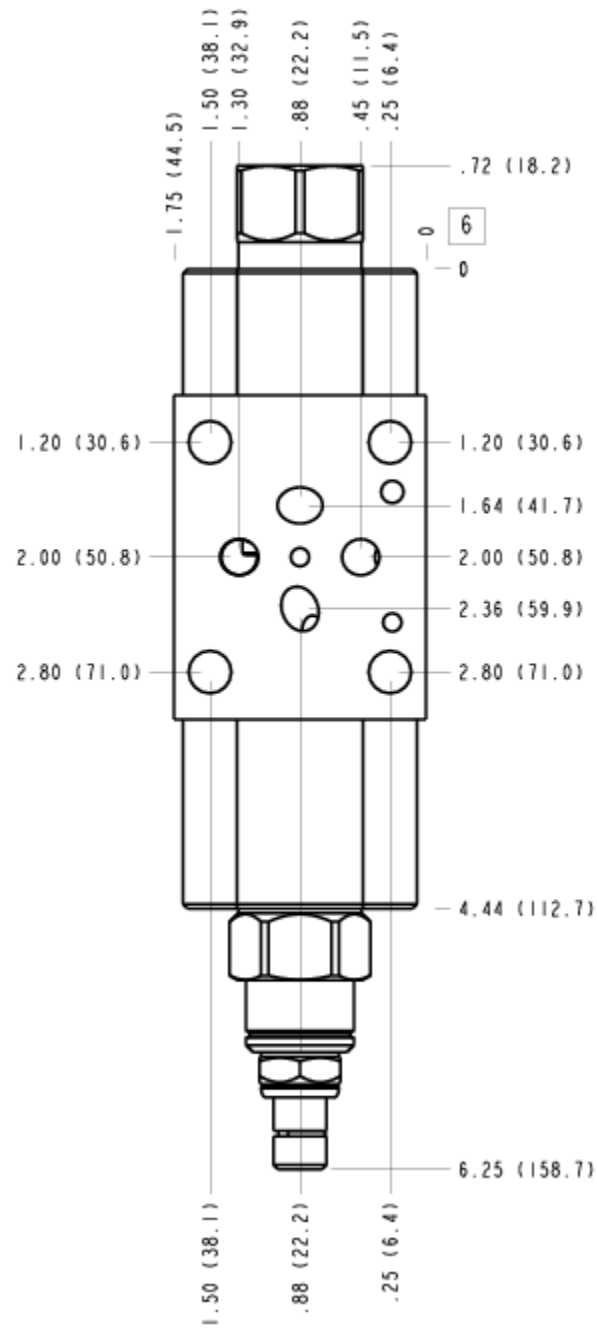
FACE GRID

1	2	3	4
5	6	7	8
9	10	11	12

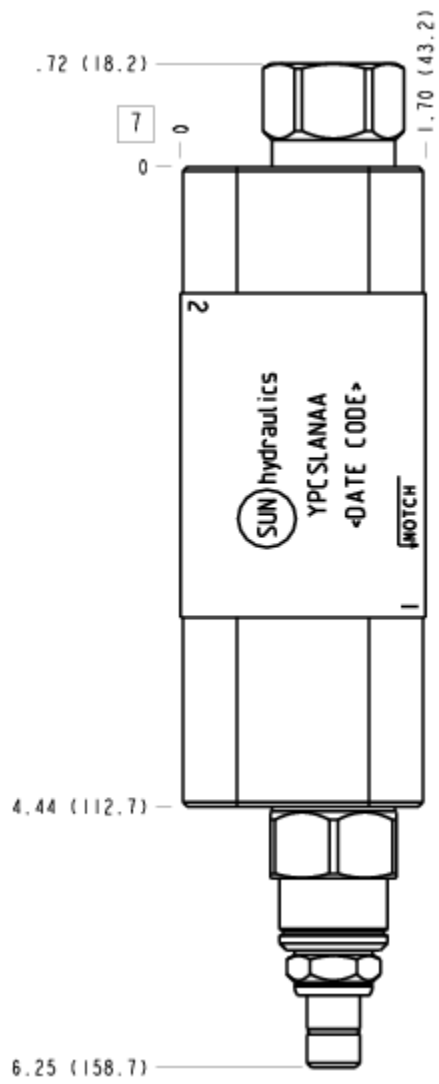
FACE 2



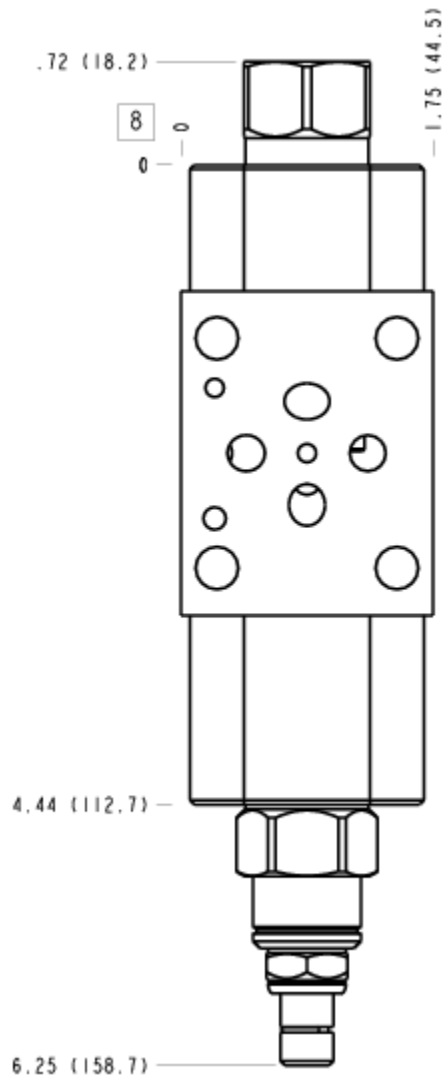
FACE 6



FACE 7



FACE 8



FACE 10

