

## TECHNICAL DATA

Body Type	Sandwich
Interface	ISO 03
Capacity	40 L/min.
Body Features	On A with reverse flow check
Seal Plate Included (see notes)	Yes
Stack Height	44,7 mm

**OPTION SELECTION EXAMPLE: YPCSLANAA**

CONTROL		(L) ADJUSTMENT RANGE	(A) SEAL MATERIAL	(N)	
<b>L</b>	Standard Screw Adjustment	<b>A</b>	100 - 3000 psi (7 - 210 bar), 200 psi (14 bar) Standard Setting	<b>N</b>	Buna-N
<b>C</b>	Tamper Resistant - Factory Set	<b>B</b>	50 - 1500 psi (3,5 - 105 bar), 200 psi (14 bar) Standard Setting	<b>V</b>	Viton
<b>W</b>	Hex Wrench Adjustment	<b>C</b>	150 - 6000 psi (10,5 - 420 bar), 200 psi (14 bar) Standard Setting		
<b>Y</b>	manilla de tres agarres	<b>D</b>	25 - 800 psi (1,7 - 55 bar), 200 psi (14 bar) Standard Setting		
		<b>E</b>	25 - 400 psi (1,7 - 28 bar), 200 psi (14 bar) Standard Setting		
		<b>N</b>	60 - 800 psi (4 - 55 bar), 200 psi (14 bar) Standard Setting		
		<b>Q</b>	60 - 400 psi (4 - 28 bar), 200 psi (14 bar) Standard Setting		
		<b>W</b>	150 - 4500 psi (10,5 - 315 bar), 200 psi (14 bar) Standard Setting		

**PRIMARY CARTRIDGE**
**(A)**

<b>A</b>	A (with PPDB primary cartridge, Pilot-operated, reductor/alivio de presión válvula )
<b>A</b>	A (with PPDB8 primary cartridge, Pilot-operated, reductor/alivio de presión módulo principal con cavidad de control T-8A integral )

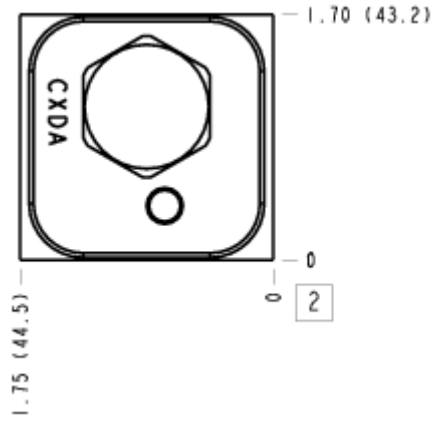
**INCLUDED COMPONENTS**

Part	Description	Quantity
500-001-012*	O-Ring	4
700-002*	Seal Plate	1
811-001-006*	Pin	1
850-004-250*	Plug	2
CXDAXCN	Cartridge	1
PPDBLAN	Cartridge - Primary	1

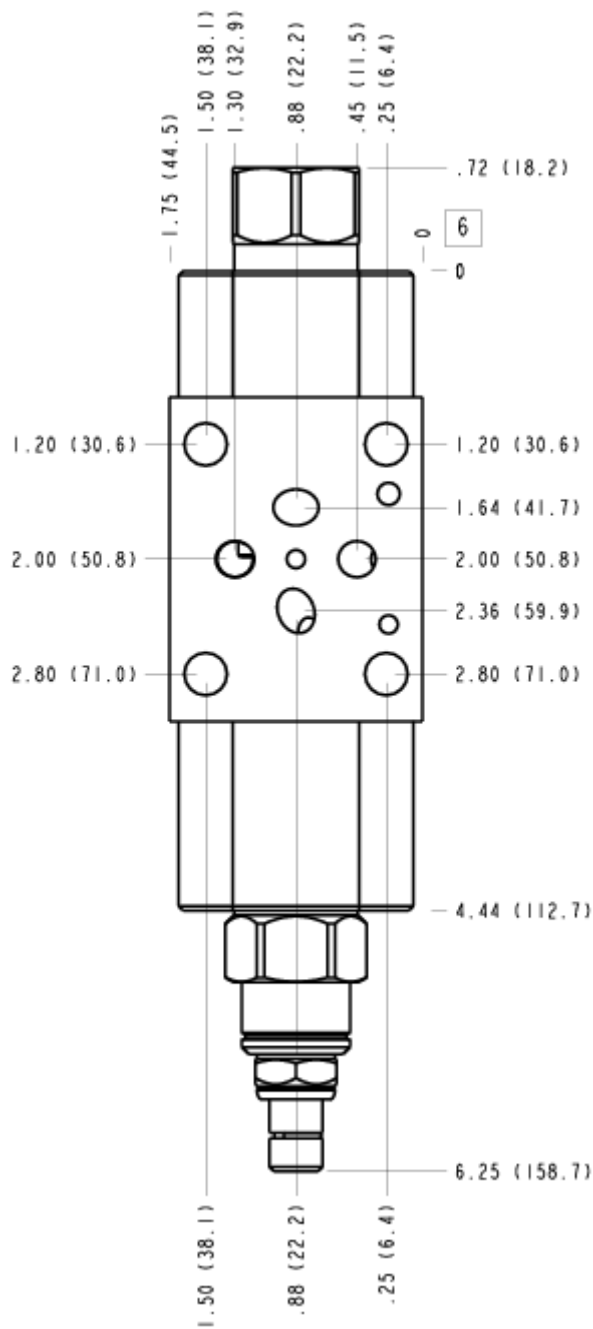
**MANIFOLD FACES**
**FACE GRID**

1	2	3	4
5	6	7	8
9	10	11	12

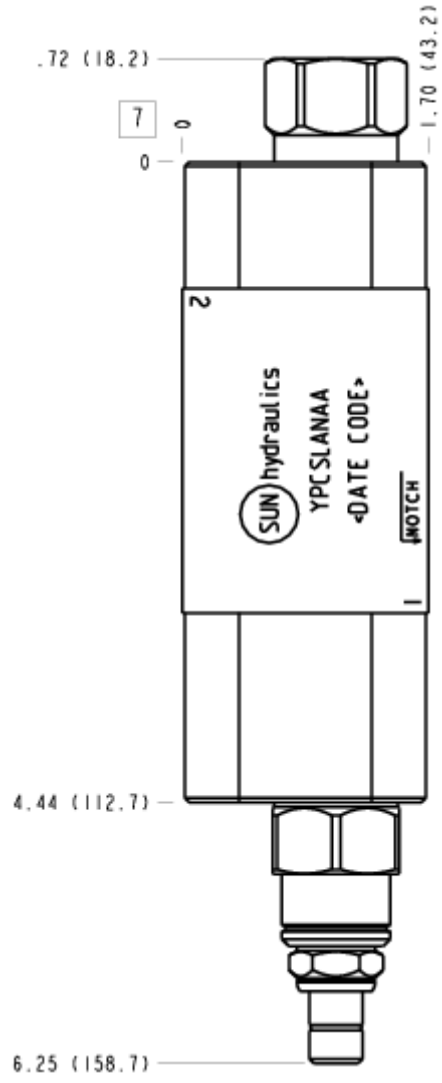
### FACE 2



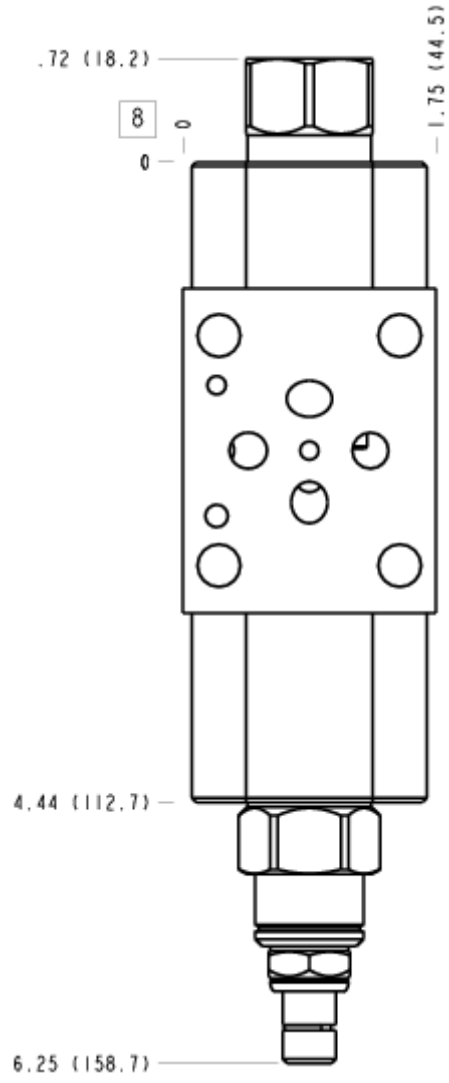
### FACE 6



FACE 7



### FACE 8



### FACE 10

