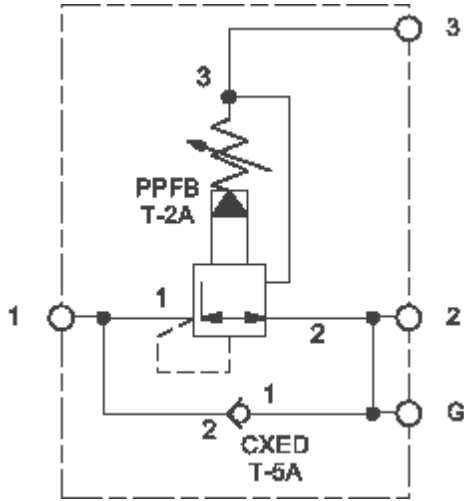




sunhydraulics.com/model/YPEK



This assembly consists of a pilot-operated pressure reducing/relieving valve which reduces a high primary pressure at the inlet (port 2) to a constant reduced pressure at port 1, with a full-flow relief function from port 1 to tank (port 3). A reverse flow check allows free flow from port 1 to port 2.

TECHNICAL DATA

NOTE:
DATA MAY VARY BY

Body Type	Line mount
Capacity	20 gpm
Mounting Hole Diameter	.28 in.
Mounting Hole Depth	Through
Mounting Hole Quantity	2

CONFIGURATION

NOTES:

- Important:** Carefully consider the maximum system pressure. The pressure rating of the manifold is dependent on the manifold material, with the port type/size a secondary consideration. Manifolds constructed of aluminum are not rated for pressures higher than 3000 psi (210 bar), regardless of the port type/size specified.
- Adjustment Range: 100 - 3000 psi (7 - 210 bar), 200 psi (14 bar) Standard Setting
- For detailed information regarding the cartridges contained in this assembly, click on the models codes shown in the Included Components tab.

L Control	Standard Screw Adjustment
N Seal Material	Buna-N
A Primary Cartridge	A (with PPFB primary cartridge, Pilot-operated, pressure reducing/relieving valve)
Port and Material Designation	Ports 1 & 2 — SAE 10; Port 3 — SAE 6; Gage Port — 1/4" NPTF; Aluminum

CONFIGURATION. SEE CONFIGURATION SECTION.

OPTION SELECTION EXAMPLE: YPEKLANAK

CONTROL	(L) ADJUSTMENT RANGE	(A) SEAL MATERIAL	(N)
L Standard Screw Adjustment	A 100 - 3000 psi (7 - 210 bar), 200 psi (14 bar) Standard Setting	N Buna-N	
C Tamper Resistant - Factory Set	B 50 - 1500 psi (3,5 - 105 bar), 200 psi (14 bar) Standard Setting	V Viton	
K Handknob	D 25 - 800 psi (1,7 - 55 bar), 200 psi (14 bar) Standard Setting		
W Hex Wrench Adjustment	E 25 - 400 psi (1,7 - 28 bar), 200 psi (14 bar) Standard Setting		
Y Tri-Grip Handknob	N 60 - 800 psi (4 - 55 bar), 200 psi (14 bar) Standard Setting		
	Q 60 - 400 psi (4 - 28 bar), 200 psi (14 bar) Standard Setting		
	W 150 - 4500 psi (10,5 - 315 bar), 200 psi (14 bar) Standard Setting		

PRIMARY CARTRIDGE (A)

A	A (with PPFB primary cartridge, Pilot-operated, pressure reducing/relieving valve)
A	A (with PPF8 primary cartridge, Pilot-operated, pressure reducing/relieving main stage with integral T-8A control cavity)

INCLUDED COMPONENTS

Part	Description	Quantity
CXEDXCN	Cartridge	1
PPFBLAN	Cartridge - Primary	1

TECHNICAL FEATURES

- Pilot operated valves exhibit exceptionally flat pressure/flow characteristics, are very stable and have low hysteresis.