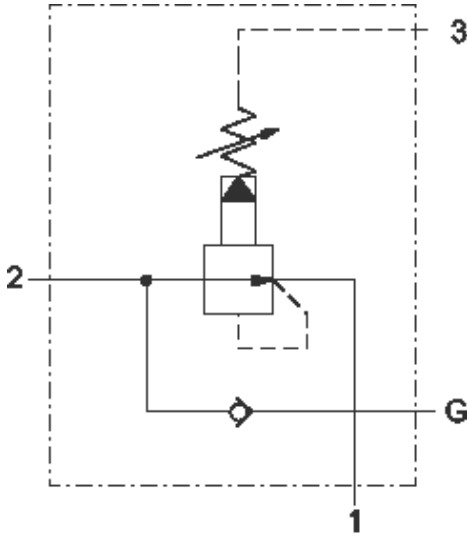




sunhydraulics.com/model/YPEL



This assembly consists of a pilot-operated pressure reducing/relieving valve which reduces a high primary pressure at the inlet (port 2) to a constant reduced pressure at port 1, with a full-flow relief function from port 1 to tank (port 3). A reverse flow check allows free flow from port 1 to port 2.

TECHNICAL DATA

CONFIGURATION

NOTES:

| | |
|--|--|
| L Control | Standard Screw Adjustment |
| A Adjustment Range | 100 - 3000 psi (7 - 210 bar), 200 psi (14 bar) Standard Setting |
| N Seal Material | Buna-N |
| Range Letter(s) of Subordinate Cartridge | |
| Port and Material Designation | |

- **Important:** Carefully consider the maximum system pressure. The pressure rating of the manifold is dependent on the manifold material, with the port type/size a secondary consideration. Manifolds constructed of aluminum are not rated for pressures higher than 3000 psi (210 bar), regardless of the port type/size specified.
- For detailed information regarding the cartridges contained in this assembly, click on the models codes shown in the Included Components tab.

CONFIGURATION OPTIONS

Model Code Example: YPELLANWNN

| CONTROL | (L) | ADJUSTMENT RANGE | (A) | SEAL MATERIAL | (N) |
|----------|-----|--|----------|---------------|----------|
| L | | Standard Screw Adjustment | A | | N |
| | | | | | Buna-N |
| | | | B | | V |
| | | | | | Viton |
| | | 100 - 3000 psi (7 - 210 bar), 200 psi (14 bar) Standard Setting | | | |
| | | 50 - 1500 psi (3,5 - 105 bar), 200 psi (14 bar) Standard Setting | | | |
| | | 25 - 800 psi (1,7 - 55 bar), 200 psi (14 bar) Standard Setting | | | |
| | | 60 - 800 psi (4 - 55 bar), 200 psi (14 bar) Standard Setting | | | |
| | | 150 - 4500 psi (10,5 - 315 bar), 200 psi (14 bar) Standard Setting | | | |

PRIMARY CARTRIDGE

(A)

| | |
|----------|--|
| A | 4 psi (0,3 bar) (with PPF8 primary cartridge, Pilot-operated, pressure reducing/relieving valve) |
| B | 15 psi (1 bar) (with PPF8 primary cartridge, Pilot-operated, pressure reducing/relieving valve) |
| C | 30 psi (2 bar) (with PPF8 primary cartridge, Pilot-operated, pressure reducing/relieving valve) |
| D | 50 psi (3,5 bar) (with PPF8 primary cartridge, Pilot-operated, pressure reducing/relieving valve) |
| E | 75 psi (5 bar) (with PPF8 primary cartridge, Pilot-operated, pressure reducing/relieving valve) |
| F | 100 psi (7 bar) (with PPF8 primary cartridge, Pilot-operated, pressure reducing/relieving valve) |
| Z | 1 psi (0,07 bar) (with PPF8 primary cartridge, Pilot-operated, pressure reducing/relieving valve) |
| F | 100 psi (7 bar) (with PPF8 primary cartridge, Pilot-operated, pressure reducing/relieving main stage with integral T-8A control cavity) |
| E | 75 psi (5 bar) (with PPF8 primary cartridge, Pilot-operated, pressure reducing/relieving main stage with integral T-8A control cavity) |
| D | 50 psi (3,5 bar) (with PPF8 primary cartridge, Pilot-operated, pressure reducing/relieving main stage with integral T-8A control cavity) |
| C | 30 psi (2 bar) (with PPF8 primary cartridge, Pilot-operated, pressure reducing/relieving main stage with integral T-8A control cavity) |
| B | 15 psi (1 bar) (with PPF8 primary cartridge, Pilot-operated, pressure reducing/relieving main stage with integral T-8A control cavity) |
| A | 4 psi (0,3 bar) (with PPF8 primary cartridge, Pilot-operated, pressure reducing/relieving main stage with integral T-8A control cavity) |
| Z | 1 psi (0,07 bar) (with PPF8 primary cartridge, Pilot-operated, pressure reducing/relieving main stage with integral T-8A control cavity) |