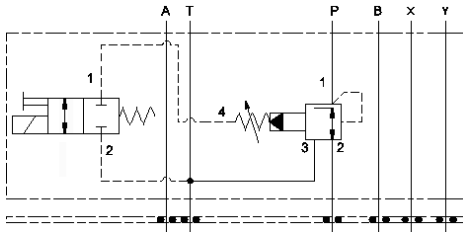
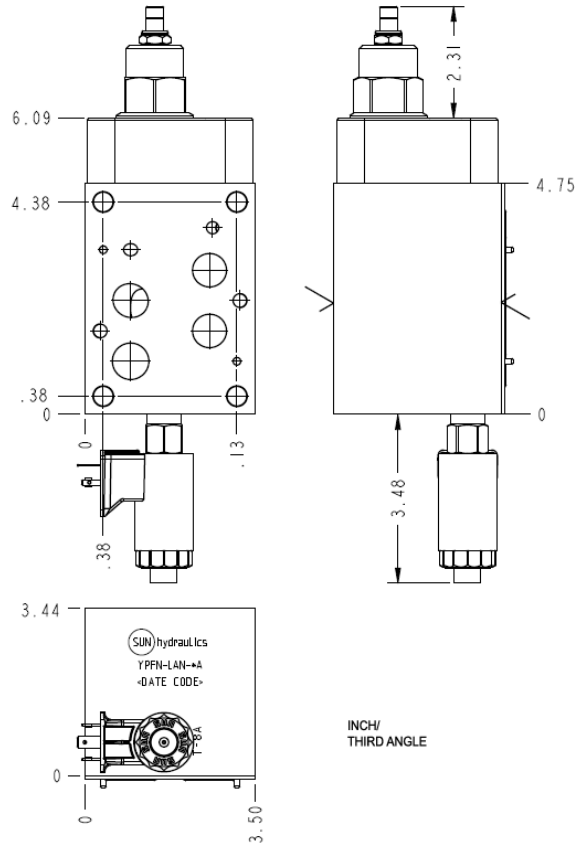


Normally open solenoid



Normally closed solenoid



TECHNICAL DATA

| | |
|---------------------------------|------------|
| Body Type | Sandwich |
| Interface | ISO 07 |
| Capacity | 160 L/min. |
| Body Features | On P |
| Seal Plate Included (see notes) | Yes |
| Stack Height | 90 mm |

OPTION SELECTION EXAMPLE: YPFNLANFA224

| CONTROL | (L) ADJUSTMENT RANGE | (A) SEAL MATERIAL | (N) |
|---|---|-------------------|-----|
| L Standard Screw Adjustment | A 100 - 3000 psi (7 - 210 bar), 200 psi (14 bar) Standard Setting | N Buna-N | |
| C Tamper Resistant - Factory Set | B 50 - 1500 psi (3,5 - 105 bar), 200 psi (14 bar) Standard Setting | V Viton | |
| | D 25 - 800 psi (1,7 - 55 bar), 200 psi (14 bar) Standard Setting | | |
| | E 25 - 400 psi (1,7 - 28 bar), 200 psi (14 bar) Standard Setting | | |
| | W 150 - 4500 psi (10,5 - 315 bar), 200 psi (14 bar) Standard Setting | | |

INCLUDED COMPONENTS

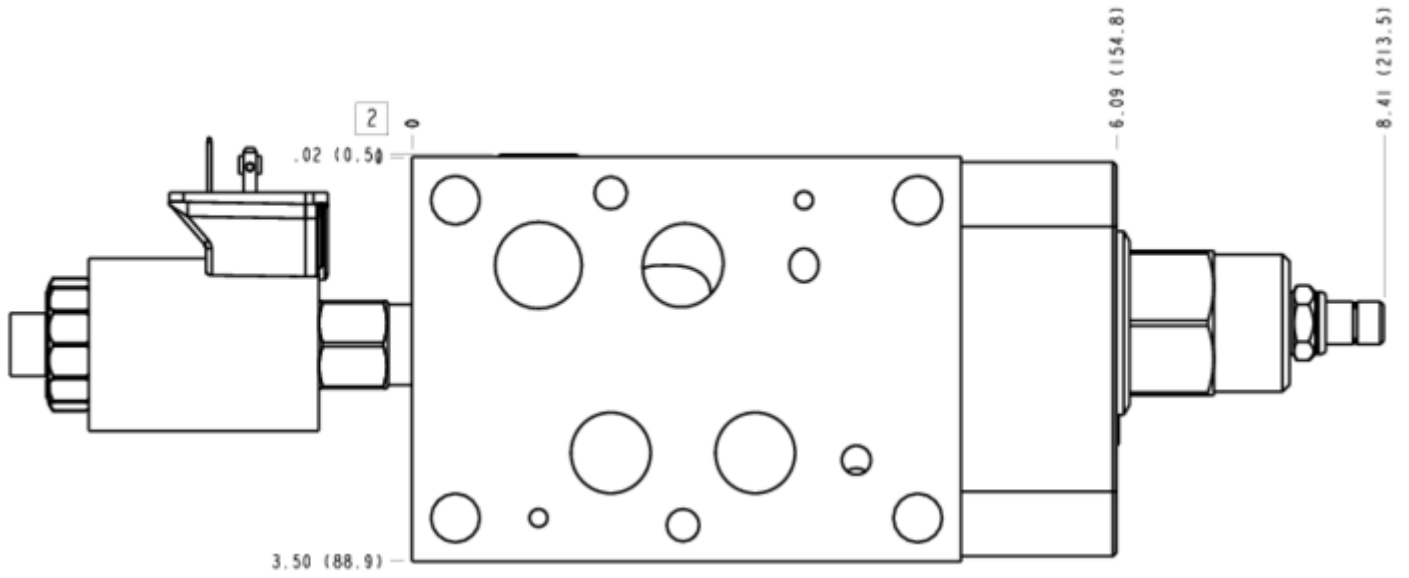
| Part | Description | Quantity |
|---------------|---------------------|----------|
| 500-001-111* | O-Ring | 2 |
| 500-001-118* | O-Ring | 4 |
| 700-006* | Seal Plate | 1 |
| 811-001-006* | Pin | 2 |
| A330-006-006* | SAE Plug | 2 |
| DTAFMHN224 | Cartridge | 1 |
| PVHALAN | Cartridge - Primary | 1 |

MANIFOLD FACES

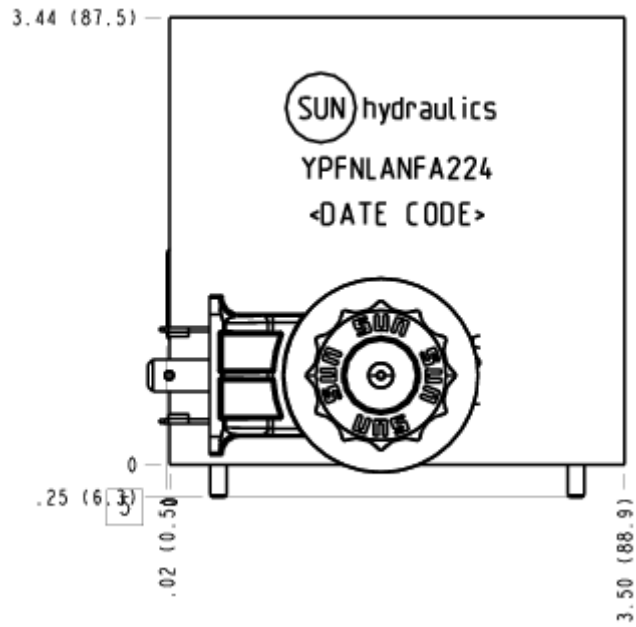
FACE GRID

| | | | |
|---|----|----|----|
| 1 | 2 | 3 | 4 |
| 5 | 6 | 7 | 8 |
| 9 | 10 | 11 | 12 |

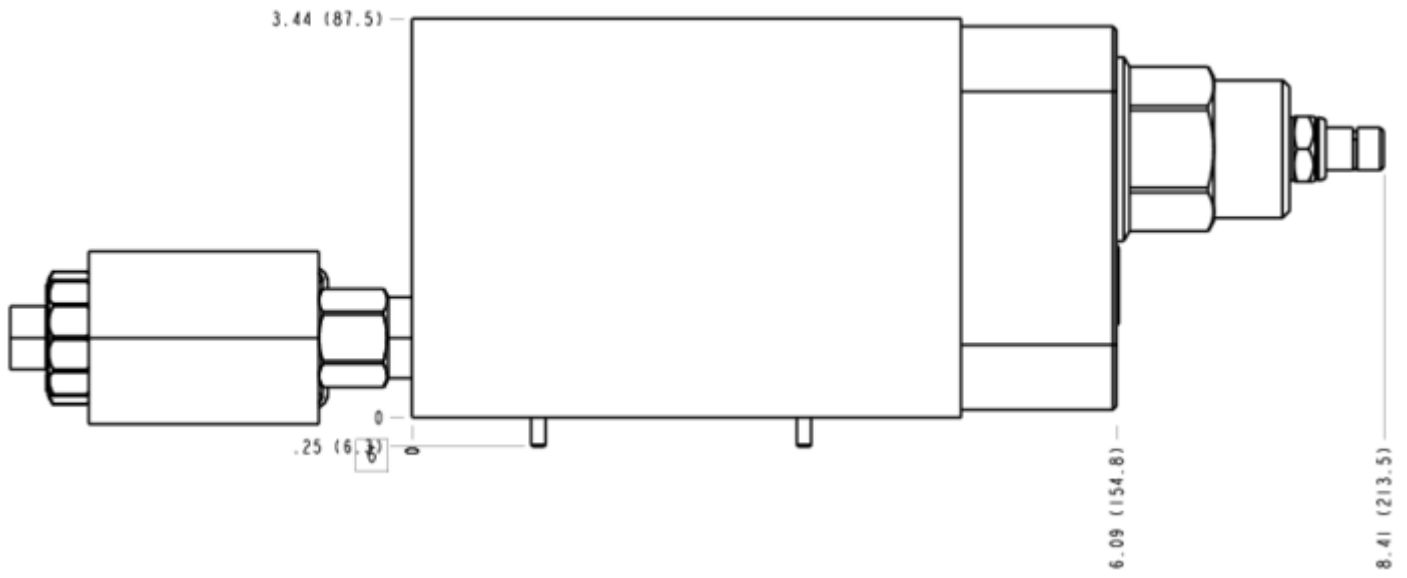
FACE 2



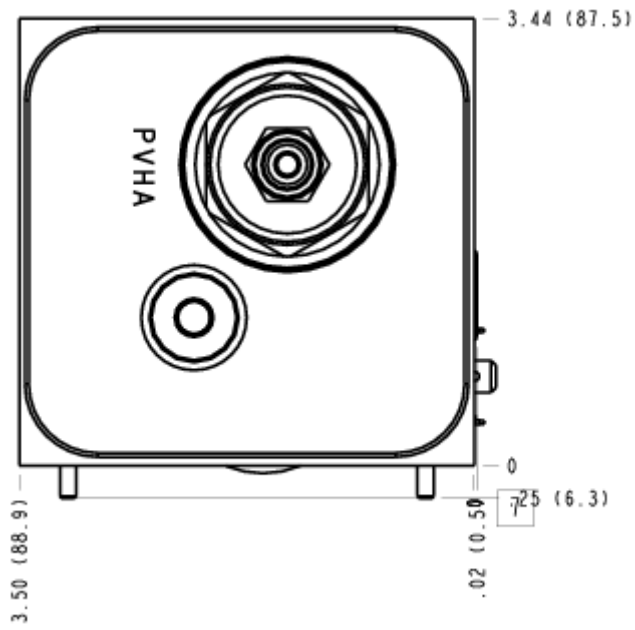
FACE 5



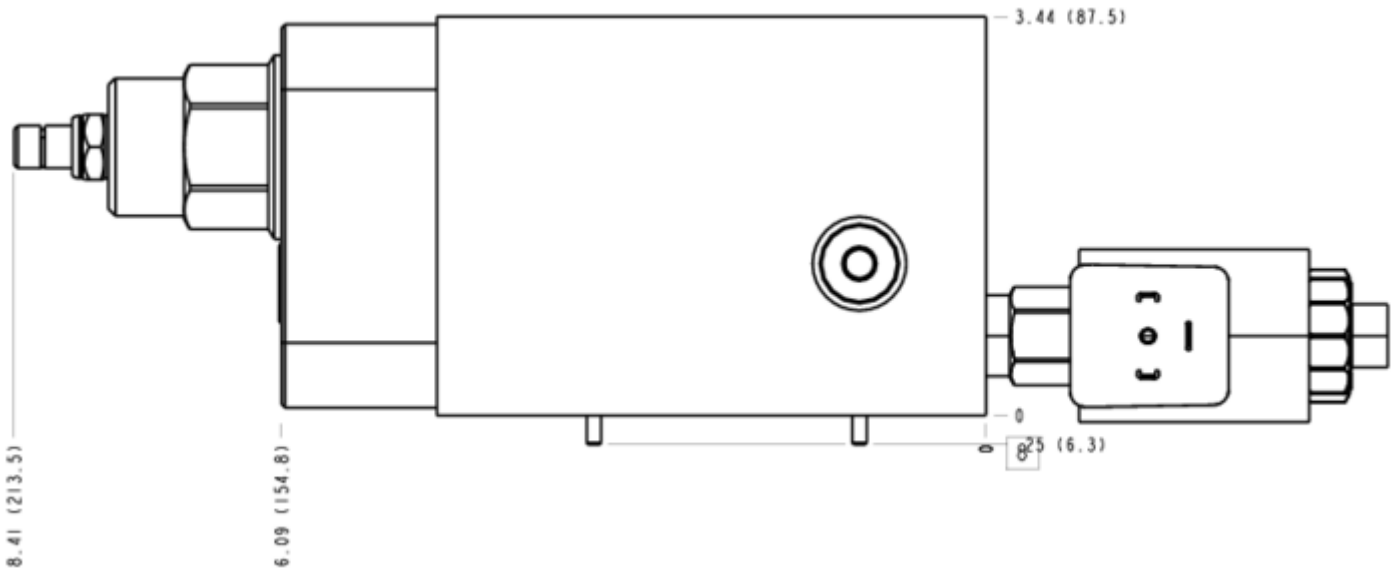
FACE 6



FACE 7



FACE 8



FACE 10

