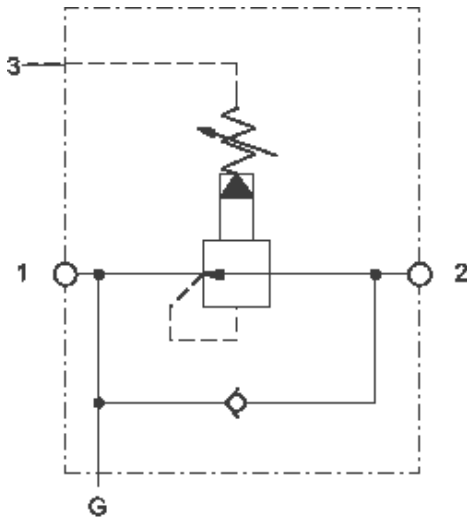




sunhydraulics.com/model/YPGA

This assembly consists of pilot-operated, pressure reducing valve which reduces a high primary pressure at the inlet (port 2) to a constant reduced pressure downstream (port 1). Additionally, the assembly provides a reverse flow check that allows free flow from port 1 to 2.



TECHNICAL DATA

NOTE:

Body Type	Line mount	DATA MAY VARY BY
Capacity	40 gpm	
Mounting Hole Diameter	.41 in.	
Mounting Hole Depth	Through	
Mounting Hole Quantity	2	

CONFIGURATION

NOTES: **Important:** Carefully consider the maximum system pressure. The pressure rating of the manifold is dependent on the manifold material, with the port type/size a secondary consideration. Manifolds constructed of aluminum are not rated for pressures higher than 3000 psi (210 bar), regardless of the port type/size specified.

- For detailed information regarding the cartridges contained in this assembly, click on the models codes shown in the Included Components tab.

L Control	Standard Screw Adjustment
A Adjustment Range	200 psi (14 bar) Standard Setting
N Seal Material	Buna-N
A Range Letter(s) of Subordinate Cartridge	4 psi (0,3 bar) (with PBHB primary cartridge, Pilot-operated, pressure reducing valve)
N Port and Material Designation	Ports 1 & 2 — SAE 20; Port 3 — SAE 6; Gage Port — 1/4" NPTF; Aluminum

CONFIGURATION. SEE CONFIGURATION SECTION.

OPTION SELECTION EXAMPLE: YPGALANAN

CONTROL	(L) ADJUSTMENT RANGE	(A) SEAL MATERIAL	(N)
L Standard Screw Adjustment	A 100 - 3000 psi (7 - 210 bar), 200 psi (14 bar) Standard Setting	N Buna-N	
C Tamper Resistant - Factory Set	B 50 - 1500 psi (3,5 - 105 bar), 200 psi (14 bar) Standard Setting	V Viton	
K Handknob	C 150 - 6000 psi (10,5 - 420 bar), 200 psi (14 bar) Standard Setting		
W Hex Wrench Adjustment	D 25 - 800 psi (1,7 - 55 bar), 200 psi (14 bar) Standard Setting		
Y Tri-Grip Handknob	E 25 - 400 psi (1,7 - 28 bar), 200 psi (14 bar) Standard Setting		
	N 60 - 800 psi (4 - 55 bar), 200 psi (14 bar) Standard Setting		
	Q 60 - 400 psi (4 - 28 bar), 200 psi (14 bar) Standard Setting		
	W 150 - 4500 psi (10,5 - 315 bar), 200 psi (14 bar) Standard Setting		

PRIMARY CARTRIDGE (A)

A 4 psi (0,3 bar) (with PBHB primary cartridge, Pilot-operated, pressure reducing valve)
B 15 psi (1 bar) (with PBHB primary cartridge, Pilot-operated, pressure reducing valve)
C 30 psi (2 bar) (with PBHB primary cartridge, Pilot-operated, pressure reducing valve)
D 50 psi (3,5 bar) (with PBHB primary cartridge, Pilot-operated, pressure reducing valve)
E 75 psi (5 bar) (with PBHB primary cartridge, Pilot-operated, pressure reducing valve)
F 100 psi (7 bar) (with PBHB primary cartridge, Pilot-operated, pressure reducing valve)
Z 1 psi (0,07 bar) (with PBHB primary cartridge, Pilot-operated, pressure reducing valve)
Z 1 psi (0,07 bar) (with PBHB8 primary cartridge, Pilot-operated, pressure reducing main stage with integral T-8A control cavity)
F 100 psi (7 bar) (with PBHB8 primary cartridge, Pilot-operated, pressure reducing main stage with integral T-8A control cavity)
E 75 psi (5 bar) (with PBHB8 primary cartridge, Pilot-operated, pressure reducing main stage with integral T-8A control cavity)
D 50 psi (3,5 bar) (with PBHB8 primary cartridge, Pilot-operated, pressure reducing main stage with integral T-8A control cavity)
C 30 psi (2 bar) (with PBHB8 primary cartridge, Pilot-operated, pressure reducing main stage with integral T-8A control cavity)
B 15 psi (1 bar) (with PBHB8 primary cartridge, Pilot-operated, pressure reducing main stage with integral T-8A control cavity)
A 4 psi (0,3 bar) (with PBHB8 primary cartridge, Pilot-operated, pressure reducing main stage with integral T-8A control cavity)

INCLUDED COMPONENTS

Part	Description	Quantity
CXGDHAN	Cartridge	1
PBHBLAN	Cartridge - Primary	1