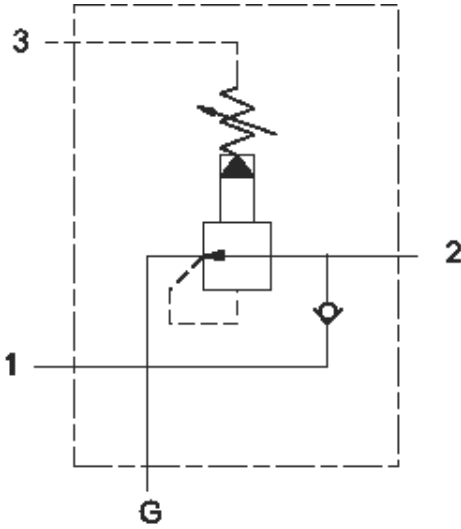




This assembly consists of pilot-operated, pressure reducing valve which reduces a high primary pressure at the inlet (port 2) to a constant reduced pressure downstream (port 1). Additionally, the assembly provides a reverse flow check that allows free flow from port 1 to 2.

## TECHNICAL DATA



## CONFIGURATION

### NOTES:

<b>L</b> Control	Standard Screw Adjustment
<b>A</b> Adjustment Range	100 - 3000 psi (7 - 210 bar), 200 psi (14 bar) Standard Setting
<b>N</b> Seal Material	Buna-N
Range Letter(s) of Subordinate Cartridge	
Port and Material Designation	

- **Important:** Carefully consider the maximum system pressure. The pressure rating of the manifold is dependent on the manifold material, with the port type/size a secondary consideration. Manifolds constructed of aluminum are not rated for pressures higher than 3000 psi (210 bar), regardless of the port type/size specified.
- For detailed information regarding the cartridges contained in this assembly, click on the models codes shown in the Included Components tab.

**CONFIGURATION OPTIONS**

Model Code Example: YPJALANWNNR

CONTROL	(L) ADJUSTMENT RANGE	(A) SEAL MATERIAL	(N)
<b>L</b> Standard Screw Adjustment	<b>A</b> 100 - 3000 psi (7 - 210 bar), 200 psi (14 bar) Standard Setting	<b>N</b> Buna-N	
	<b>B</b> 50 - 1500 psi (3,5 - 105 bar), 200 psi (14 bar) Standard Setting	<b>V</b> Viton	
	<b>C</b> 150 - 6000 psi (10,5 - 420 bar), 200 psi (14 bar) Standard Setting		
	<b>D</b> 25 - 800 psi (1,7 - 55 bar), 200 psi (14 bar) Standard Setting		
	<b>N</b> 60 - 800 psi (4 - 55 bar), 200 psi (14 bar) Standard Setting		
	<b>W</b> 150 - 4500 psi (10,5 - 315 bar), 200 psi (14 bar) Standard Setting		

**PRIMARY CARTRIDGE**

(A)

<b>A</b> 4 psi (0,3 bar) (with PBJB primary cartridge, Pilot-operated, pressure reducing valve)
<b>B</b> 15 psi (1 bar) (with PBJB primary cartridge, Pilot-operated, pressure reducing valve)
<b>C</b> 30 psi (2 bar) (with PBJB primary cartridge, Pilot-operated, pressure reducing valve)
<b>D</b> 50 psi (3,5 bar) (with PBJB primary cartridge, Pilot-operated, pressure reducing valve)
<b>E</b> 75 psi (5 bar) (with PBJB primary cartridge, Pilot-operated, pressure reducing valve)
<b>F</b> 100 psi (7 bar) (with PBJB primary cartridge, Pilot-operated, pressure reducing valve)
<b>Z</b> 1 psi (0,07 bar) (with PBJB primary cartridge, Pilot-operated, pressure reducing valve)
<b>F</b> 100 psi (7 bar) (with PBJB8 primary cartridge, Pilot-operated, pressure reducing main stage with integral T-8A control cavity)
<b>E</b> 75 psi (5 bar) (with PBJB8 primary cartridge, Pilot-operated, pressure reducing main stage with integral T-8A control cavity)
<b>D</b> 50 psi (3,5 bar) (with PBJB8 primary cartridge, Pilot-operated, pressure reducing main stage with integral T-8A control cavity)
<b>C</b> 30 psi (2 bar) (with PBJB8 primary cartridge, Pilot-operated, pressure reducing main stage with integral T-8A control cavity)
<b>B</b> 15 psi (1 bar) (with PBJB8 primary cartridge, Pilot-operated, pressure reducing main stage with integral T-8A control cavity)
<b>A</b> 4 psi (0,3 bar) (with PBJB8 primary cartridge, Pilot-operated, pressure reducing main stage with integral T-8A control cavity)
<b>Z</b> 1 psi (0,07 bar) (with PBJB8 primary cartridge, Pilot-operated, pressure reducing main stage with integral T-8A control cavity)