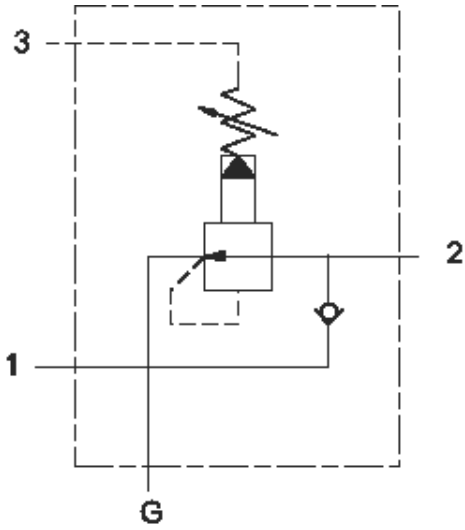




TECHNICAL DATA NOTE: DATA MAY VARY BY CONFIGURATION. SEE CONFIGURATION SECTION.



CONFIGURATION OPTIONS

Model Code Example: YPJALANWNNR

CONTROL (L)	ADJUSTMENT RANGE(A)	MINIMUM CONTROL PRESSURE (W)	SEAL MATERIAL (N)	SEAL MATERIAL (N)	PORT AND MATERIAL DESIGNATION (R)
L Standard Screw Adjustment	A 100 - 3000 psi (7 - 210 bar), 200 psi (14 bar) Standard Setting	W 100 psi (7 bar)	N Buna-N	N Buna-N	R Ports 1 & 2 — 1 1/2 in. Code 61; Port 3 — SAE 6; Gage Port — 1/4" NPTF; Aluminum
C Tamper Resistant - Factory Set	B 50 - 1500 psi (3,5 - 105 bar), 200 psi (14 bar) Standard Setting	D 25 psi (1,7 bar)	V Viton	V Viton	R/M Ports 1 & 2 — 1 1/2 in. Code 61; Port 3 — 1/4" BSPP; Gage Port — 1/4" BSPP; Metric Aluminum
K manilla	C 150 - 6000 psi (10,5 - 420 bar), 200 psi (14 bar) Standard Setting				R/S Ports 1 & 2 — 1 1/2 in. Code 61; Port 3 — SAE 6; Gage Port — 1/4" NPTF; Iron
	D 25 - 800 psi (1,7 - 55 bar), 200 psi (14 bar) Standard Setting				R/T Ports 1 & 2 — 1 1/2 in. Code 61; Port 3 — 1/4" BSPP; Gage Port — 1/4" BSPP; Metric Iron
	E 25 - 400 psi (1,7 - 28 bar), 200 psi (14 bar) Standard Setting				S Ports 1 & 2 — 2" Code 61; Port 3 — SAE 6; Gage Port — 1/4" NPTF; Aluminum
	N 60 - 800 psi (4 - 55 bar), 200 psi (14 bar) Standard Setting				S/M Ports 1 & 2 — 2" Code 61; Port 3 — 1/4" BSPP; Gage Port — 1/4" BSPP; Metric Aluminum
					S/S Ports 1 & 2 — 2" Code 61; Port 3 — SAE 6; Gage Port — 1/4" NPTF; Iron
					S/T Ports 1 & 2 — 2" Code 61; Port 3 — 1/4" BSPP; Gage Port — 1/4" BSPP; Metric Iron