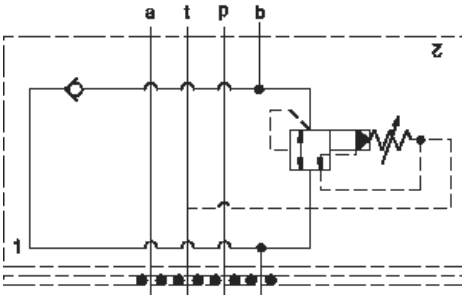




**TECHNICAL DATA**



**CONFIGURATION**

<b>F</b>	
<b>A</b>	100 - 3000 psi (7 - 210 bar), 1000 psi (70 bar)
<b>N</b>	
<b>A</b> Primary Cartridge	A (with SQDB primary cartridge, , , )
<b>A</b> Port and Material Designation	A Aluminum

**CONFIGURATION OPTIONS**

Model Code Example: YQCBFANAA

(F)

(A)

(N)

<b>F</b>	<b>A</b>	100 - 3000 psi (7 - 210 bar), 1000 psi (70 bar)	<b>N</b>
L			V

**PRIMARY CARTRIDGE**

(A)

<b>A</b>	A (with SQDB primary cartridge, , , )
----------	---------------------------------------

**INCLUDED COMPONENTS**

Part	Description	Quantity
500-001-012*	O-Ring	4
700-002*	Seal Plate	1
811-001-006*	Pin	1
850-004-250*	Plug	2
CXCDXCN	Cartridge	1
SQDBFAN	Cartridge - Primary	1