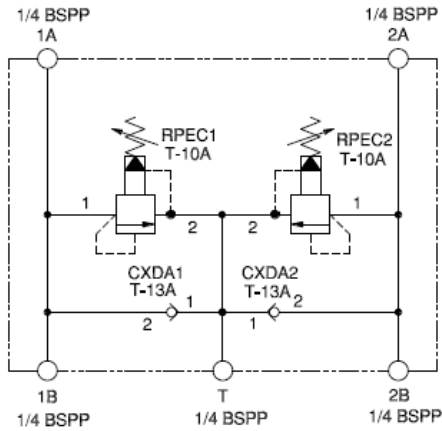




This assembly provides cross-port relief and anti-cavitation protection between ports 1 and 2.



TECHNICAL DATA NOTE: DATA MAY VARY BY CONFIGURATION. SEE CONFIGURATION SECTION.

Body Type	Line mount
Capacity	25 gpm
Mounting Hole Diameter	.34 in.
Mounting Hole Quantity	2

- NOTES:**
- **Important:** Carefully consider the maximum system pressure. The pressure rating of the manifold is dependent on the manifold material, with the port type/size a secondary consideration. Manifolds constructed of aluminum are not rated for pressures higher than 3000 psi (210 bar), regardless of the port type/size specified.
 - For detailed information regarding the cartridges contained in this assembly, click on the models codes shown in the Included Components tab.

OPTION SELECTION EXAMPLE: YRDKLANAJ

CONTROL	(L) ADJUSTMENT RANGE	(A) SEAL MATERIAL	(N)
L Standard Screw Adjustment	A 100 - 3000 psi (7 - 210 bar), 1000 psi (70 bar) Standard Setting	N Buna-N	
C Tamper Resistant - Factory Set	B 50 - 1500 psi (3,5 - 105 bar), 1000 psi (70 bar) Standard Setting	V Viton	
F Hex Head Screw with Locknut	C 150 - 6000 psi (10,5 - 420 bar), 1000 psi (70 bar) Standard Setting		
W Hex Wrench Adjustment	D 25 - 800 psi (1,7 - 55 bar), 400 psi (28 bar) Standard Setting		
Y Tri-Grip Handknob	E 25 - 400 psi (1,7 - 28 bar), 200 psi (14 bar) Standard Setting		
	N 60 - 800 psi (4 - 55 bar), 400 psi (28 bar) Standard Setting		
	Q 60 - 400 psi (4 - 28 bar), 200 psi (14 bar) Standard Setting		
	W 150 - 4500 psi (10,5 - 315 bar), 1000 psi (70 bar) Standard Setting		

PRIMARY CARTRIDGE (A)

A 4 psi (0,3 bar) (with RPEC primary cartridge, Pilot-operated, balanced piston relief valve)
B 15 psi (1 bar) (with RPEC primary cartridge, Pilot-operated, balanced piston relief valve)
C 30 psi (2 bar) (with RPEC primary cartridge, Pilot-operated, balanced piston relief valve)
D 50 psi (3,5 bar) (with RPEC primary cartridge, Pilot-operated, balanced piston relief valve)
E 75 psi (5 bar) (with RPEC primary cartridge, Pilot-operated, balanced piston relief valve)
F 100 psi (7 bar) (with RPEC primary cartridge, Pilot-operated, balanced piston relief valve)
Z 1 psi (0,07 bar) (with RPEC primary cartridge, Pilot-operated, balanced piston relief valve)
Z 1 psi (0,07 bar) (with RPEC8 primary cartridge, Pilot-operated, balanced piston relief main stage with integral T-8A control cavity)
F 100 psi (7 bar) (with RPEC8 primary cartridge, Pilot-operated, balanced piston relief main stage with integral T-8A control cavity)
E 75 psi (5 bar) (with RPEC8 primary cartridge, Pilot-operated, balanced piston relief main stage with integral T-8A control cavity)
D 50 psi (3,5 bar) (with RPEC8 primary cartridge, Pilot-operated, balanced piston relief main stage with integral T-8A control cavity)
C 30 psi (2 bar) (with RPEC8 primary cartridge, Pilot-operated, balanced piston relief main stage with integral T-8A control cavity)
B 15 psi (1 bar) (with RPEC8 primary cartridge, Pilot-operated, balanced piston relief main stage with integral T-8A control cavity)
A 4 psi (0,3 bar) (with RPEC8 primary cartridge, Pilot-operated, balanced piston relief main stage with integral T-8A control cavity)

INCLUDED COMPONENTS

Part	Description	Quantity
CXDAXAN	Cartridge	2
RPECLAN	Cartridge - Primary	2