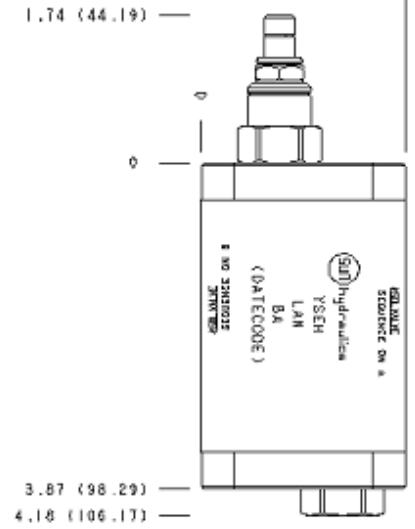
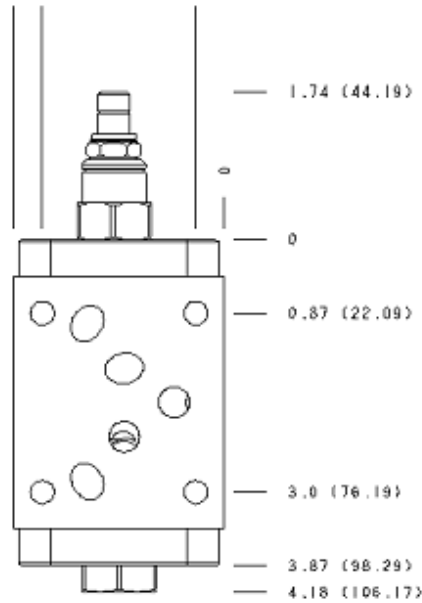


2.5 (63.5)
2.15 (54.60)

0.34 (8.63)

2.43 (61.72)



TECHNICAL DATA NOTE: DATA MAY VARY BY CONFIGURATION. SEE CONFIGURATION SECTION.

Body Type	aplilables
Interface	ISO 05
Capacity	40 L/min.
Body Features	A or B to External Port with Free Flow Check
Seal Plate Included (see notes)	Yes
Stack Height	63 mm

OPTION SELECTION EXAMPLE: YSEHLANBA

CONTROL	(L) ADJUSTMENT RANGE	(A) SEAL MATERIAL	(N)
L Standard Screw Adjustment	A 100 - 3000 psi (7 - 210 bar), 1000 psi (70 bar) Standard Setting	N Buna-N	
C Tamper Resistant - Factory Set	B 50 - 1500 psi (3,5 - 105 bar), 1000 psi (70 bar) Standard Setting	V Viton	
J Capped Screw Adjustment	D 25 - 800 psi (1,7 - 55 bar), 400 psi (28 bar) Standard Setting		
K manilla	E 25 - 400 psi (1,7 - 28 bar), 200 psi (14 bar) Standard Setting		
	W 150 - 4500 psi (10,5 - 315 bar), 1000 psi (70 bar) Standard Setting		

PRIMARY CARTRIDGE	(B)
B B (with RSDC primary cartridge, Pilot-operated, pistón balanceado secuencia válvula)	
B B (with RSDC8 primary cartridge, Pilot-operated, pistón balanceado secuencia módulo principal con cavidad de control T-8A integral)	

INCLUDED COMPONENTS

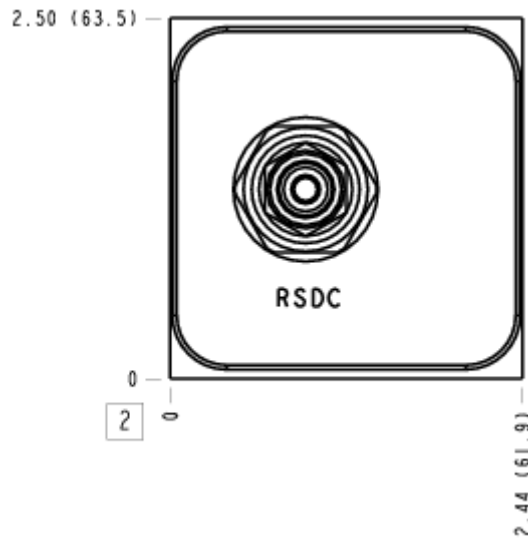
Part	Description	Quantity
500-001-014*	O-Ring	5
700-001*	Seal Plate	1
CXDAXCN	Cartridge	1
RSDCLAN	Cartridge - Primary	1

MANIFOLD FACES

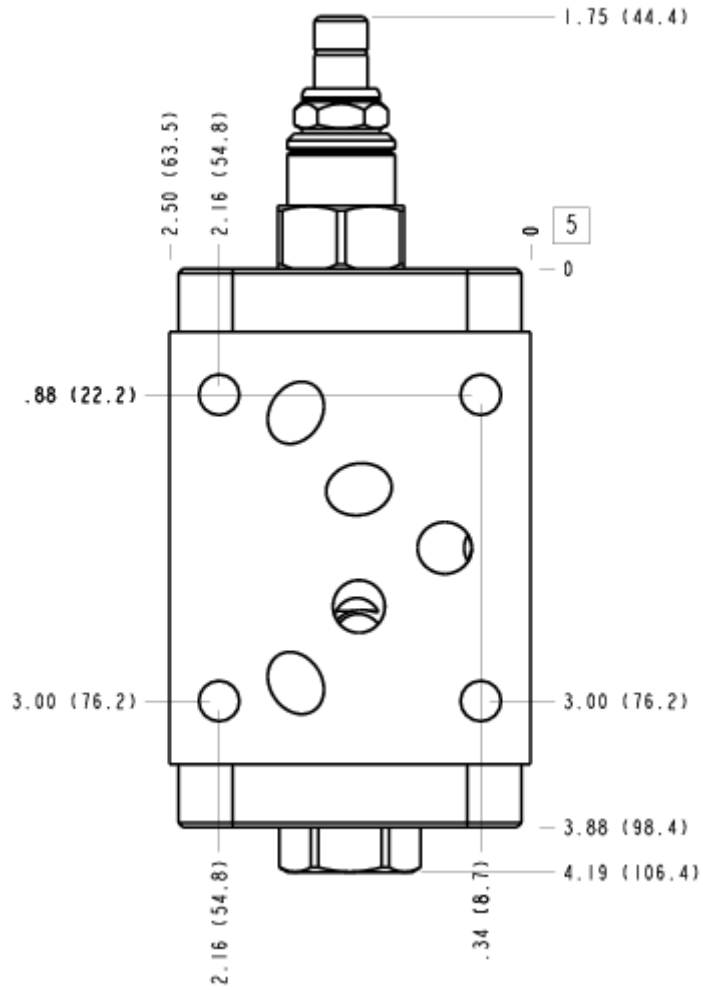
FACE GRID

1	2	3	4
5	6	7	8
9	10	11	12

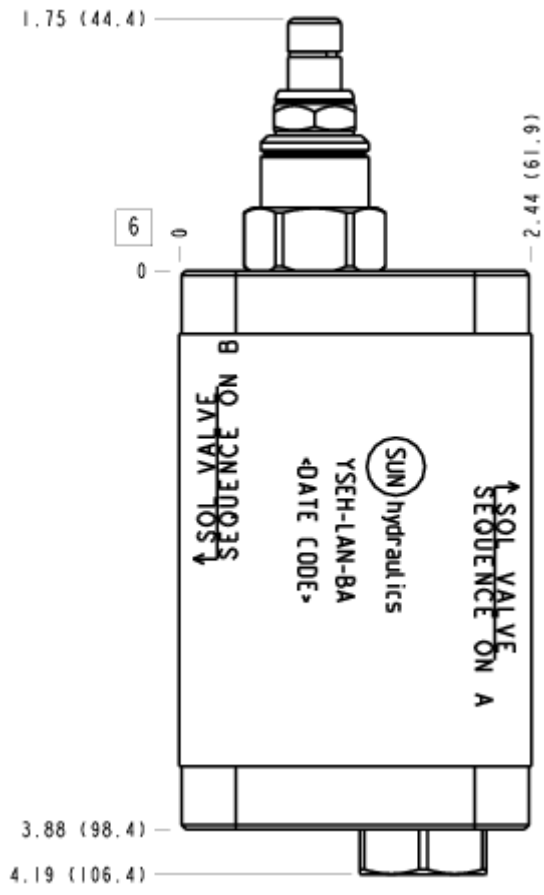
FACE 2



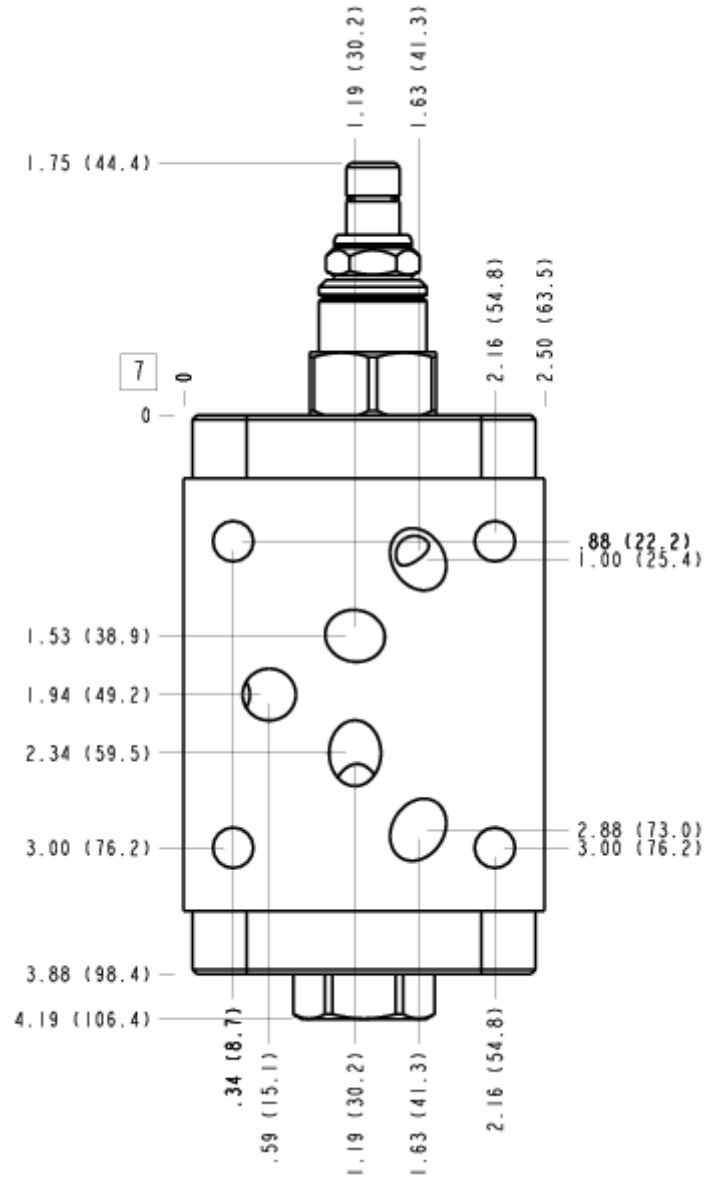
FACE 5



FACE 6



FACE 7



FACE 10

