

This assembly consists of a pilot-operated, balanced piston sequence valve that will supply a secondary circuit with flow once the pressure at the inlet (port 1) has exceeded the valve setting. The pressure setting of a sequence valve controls the pressure at port 1 relative to the pressure at the drain (port 3). These valves are insensitive to back pressure at port 2 (sequence), up to the valve setting. They may be used to regulate pressure in place of 2-port relief valves if there is pressure in the return line. Additionally the assembly also provides a reverse flow check valve.

TECHNICAL DATA NOTE: DATA MAY VARY BY CONFIGURATION. SEE CONFIGURATION SECTION.

Body Type	Line mount
Capacity	60 gpm

- NOTES:**
- **Important:** Carefully consider the maximum system pressure. The pressure rating of the manifold is dependent on the manifold material, with the port type/size a secondary consideration. Manifolds constructed of aluminum are not rated for pressures higher than 3000 psi (210 bar), regardless of the port type/size specified.
 - For detailed information regarding the cartridges contained in this assembly, click on the models codes shown in the Included Components tab.

OPTION SELECTION EXAMPLE: YSHBLANAN

CONTROL	(L) ADJUSTMENT RANGE	(A) SEAL MATERIAL	(N)
L Standard Screw Adjustment	A 100 - 3000 psi (7 - 210 bar), 1000 psi (70 bar) Standard Setting	N Buna-N	
C Tamper Resistant - Factory Set	B 50 - 1500 psi (3,5 - 105 bar), 1000 psi (70 bar) Standard Setting	V Viton	
K Handknob	C 150 - 6000 psi (10,5 - 420 bar), 1000 psi (70 bar) Standard Setting		
Y Tri-Grip Handknob	D 25 - 800 psi (1,7 - 55 bar), 400 psi (28 bar) Standard Setting		
	E 25 - 400 psi (1,7 - 28 bar), 200 psi (14 bar) Standard Setting		
	N 60 - 800 psi (4 - 55 bar), 400 psi (28 bar) Standard Setting		
	W 150 - 4500 psi (10,5 - 315 bar), 1000 psi (70 bar) Standard Setting		

PRIMARY CARTRIDGE (A)

A 4 psi (0,3 bar) (with RSHC primary cartridge, Pilot-operated, balanced piston sequence valve)
B 15 psi (1 bar) (with RSHC primary cartridge, Pilot-operated, balanced piston sequence valve)
C 30 psi (2 bar) (with RSHC primary cartridge, Pilot-operated, balanced piston sequence valve)
D 50 psi (3,5 bar) (with RSHC primary cartridge, Pilot-operated, balanced piston sequence valve)
E 75 psi (5 bar) (with RSHC primary cartridge, Pilot-operated, balanced piston sequence valve)
F 100 psi (7 bar) (with RSHC primary cartridge, Pilot-operated, balanced piston sequence valve)
Z 1 psi (0,07 bar) (with RSHC primary cartridge, Pilot-operated, balanced piston sequence valve)
Z 1 psi (0,07 bar) (with RSHC8 primary cartridge, Pilot-operated, balanced piston sequence main stage with integral T-8A control cavity)
F 100 psi (7 bar) (with RSHC8 primary cartridge, Pilot-operated, balanced piston sequence main stage with integral T-8A control cavity)
E 75 psi (5 bar) (with RSHC8 primary cartridge, Pilot-operated, balanced piston sequence main stage with integral T-8A control cavity)
D 50 psi (3,5 bar) (with RSHC8 primary cartridge, Pilot-operated, balanced piston sequence main stage with integral T-8A control cavity)
C 30 psi (2 bar) (with RSHC8 primary cartridge, Pilot-operated, balanced piston sequence main stage with integral T-8A control cavity)
B 15 psi (1 bar) (with RSHC8 primary cartridge, Pilot-operated, balanced piston sequence main stage with integral T-8A control cavity)
A 4 psi (0,3 bar) (with RSHC8 primary cartridge, Pilot-operated, balanced piston sequence main stage with integral T-8A control cavity)

INCLUDED COMPONENTS

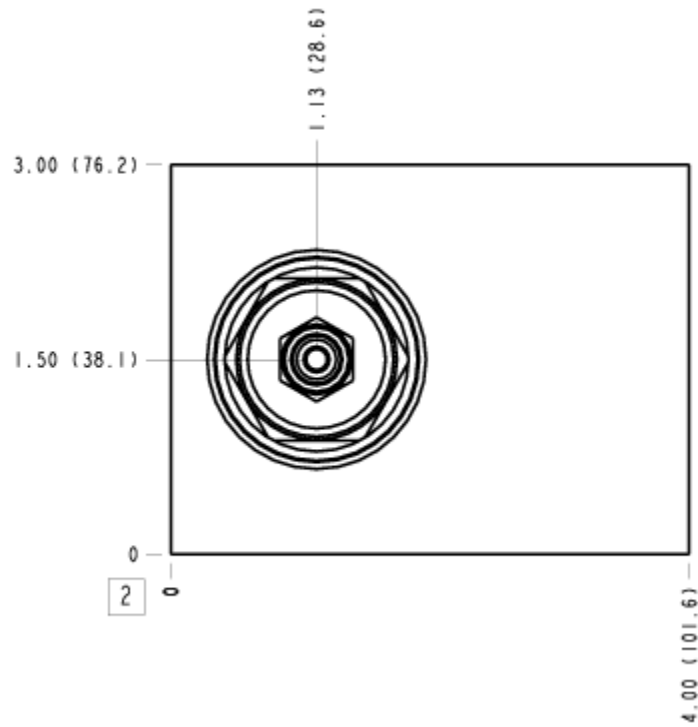
Part	Description	Quantity
CXHAXAN	Cartridge	1
RSHCLAN	Cartridge - Primary	1

MANIFOLD FACES

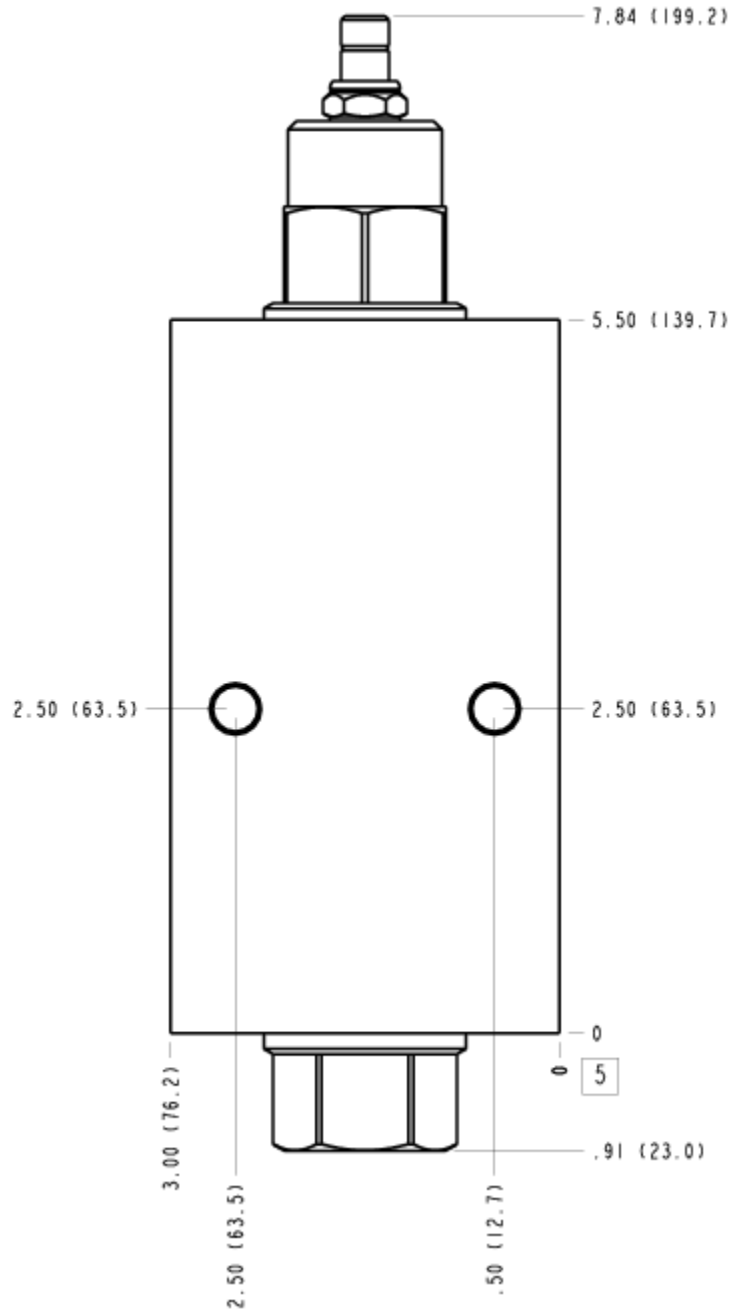
FACE GRID

1	2	3	4
5	6	7	8
9	10	11	12

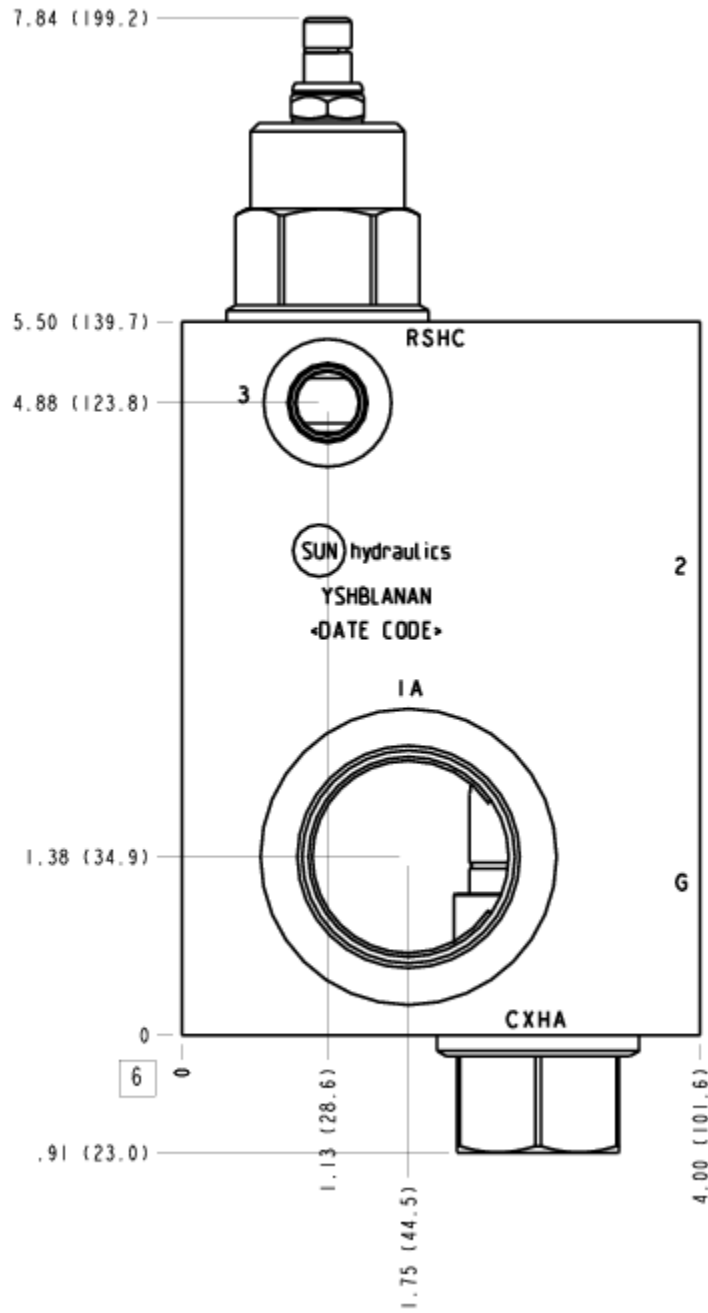
FACE 2



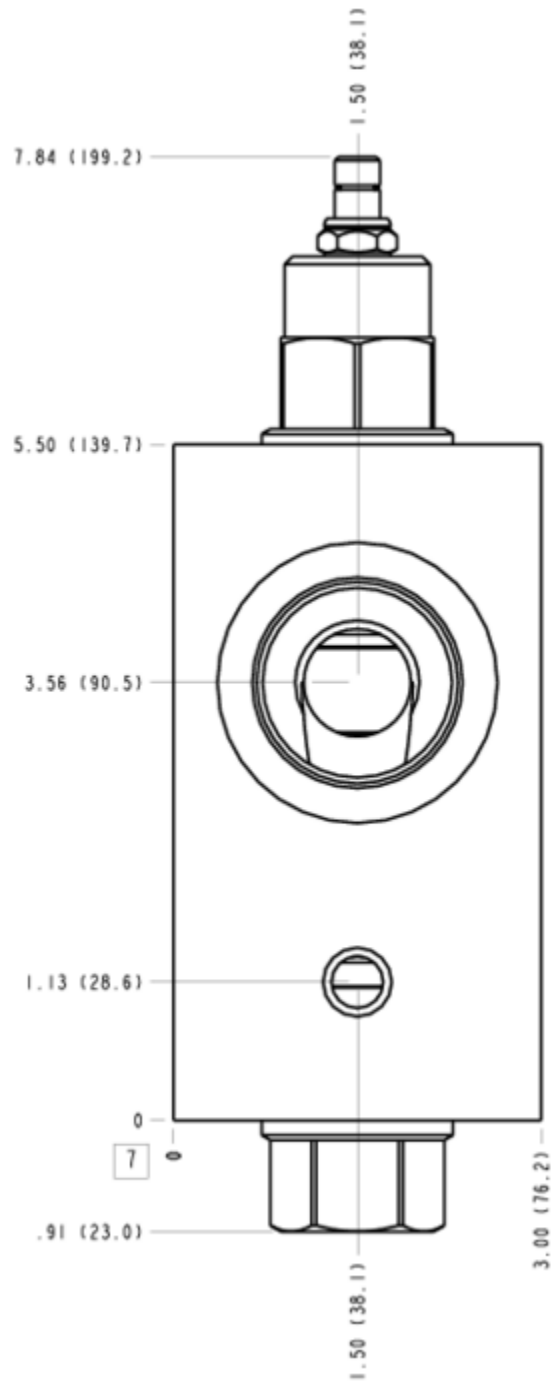
FACE 5



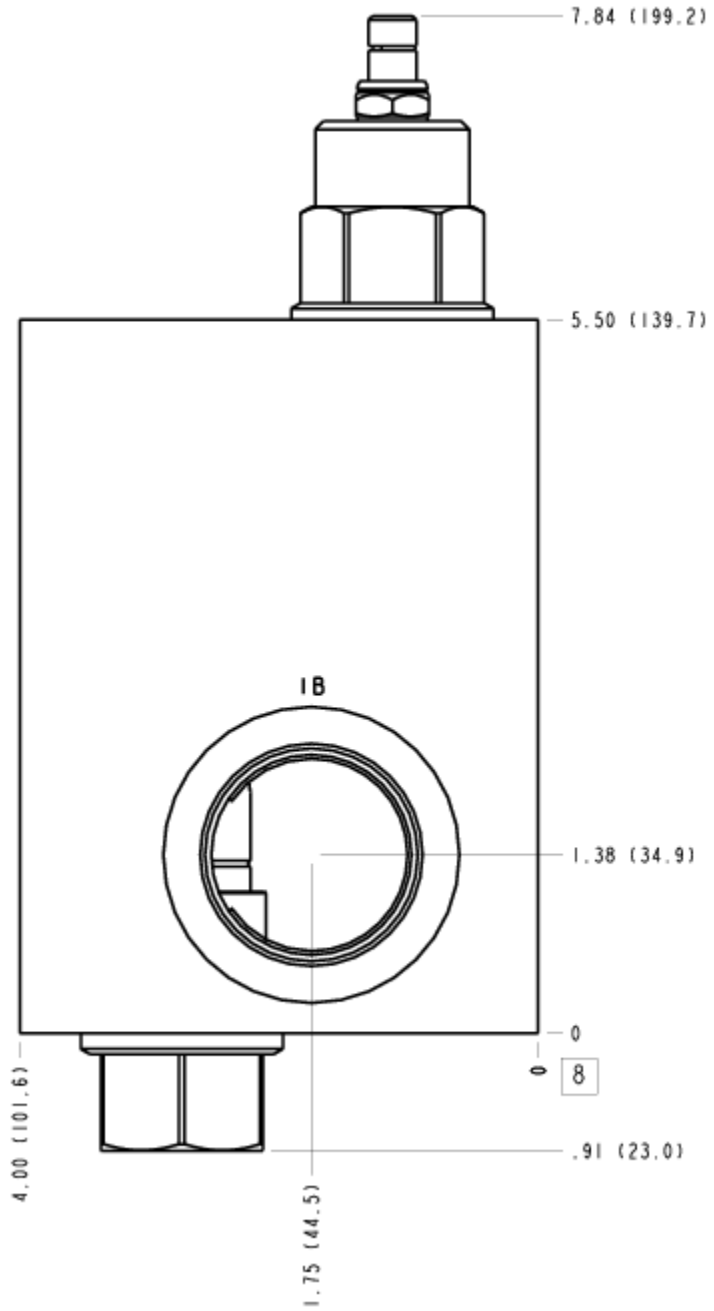
FACE 6



FACE 7



FACE 8



FACE 10

