

This assembly consists of dual pilot-operated, balanced piston sequence valves, each with a separate reverse flow check. It can be used to sequence the operation of two cylinders.

TECHNICAL DATA NOTE: DATA MAY VARY BY CONFIGURATION. SEE CONFIGURATION SECTION.

Body Type	Line mount
Capacity	60 gpm
Mounting Hole Diameter	.42 in.
Mounting Hole Depth	Through
Mounting Hole Quantity	2

- NOTES:**
- **Important:** Carefully consider the maximum system pressure. The pressure rating of the manifold is dependent on the manifold material, with the port type/size a secondary consideration. Manifolds constructed of aluminum are not rated for pressures higher than 3000 psi (210 bar), regardless of the port type/size specified.
 - For detailed information regarding the cartridges contained in this assembly, click on the models codes shown in the Included Components tab.

OPTION SELECTION EXAMPLE: YSHCLANAN

CONTROL		(L) ADJUSTMENT RANGE	(A) SEAL MATERIAL	(N)
L	Standard Screw Adjustment	A 100 - 3000 psi (7 - 210 bar), 1000 psi (70 bar) Standard Setting	N Buna-N	
C	Tamper Resistant - Factory Set	B 50 - 1500 psi (3,5 - 105 bar), 1000 psi (70 bar) Standard Setting	V Viton	
K	Handknob	C 150 - 6000 psi (10,5 - 420 bar), 1000 psi (70 bar) Standard Setting		
Y	Tri-Grip Handknob	D 25 - 800 psi (1,7 - 55 bar), 400 psi (28 bar) Standard Setting		
		E 25 - 400 psi (1,7 - 28 bar), 200 psi (14 bar) Standard Setting		
		N 60 - 800 psi (4 - 55 bar), 400 psi (28 bar) Standard Setting		
		W 150 - 4500 psi (10,5 - 315 bar), 1000 psi (70 bar) Standard Setting		

PRIMARY CARTRIDGE (A)

A	4 psi (0,3 bar) (with RSHC primary cartridge, Pilot-operated, balanced piston sequence valve)
B	15 psi (1 bar) (with RSHC primary cartridge, Pilot-operated, balanced piston sequence valve)
C	30 psi (2 bar) (with RSHC primary cartridge, Pilot-operated, balanced piston sequence valve)
D	50 psi (3,5 bar) (with RSHC primary cartridge, Pilot-operated, balanced piston sequence valve)
E	75 psi (5 bar) (with RSHC primary cartridge, Pilot-operated, balanced piston sequence valve)
F	100 psi (7 bar) (with RSHC primary cartridge, Pilot-operated, balanced piston sequence valve)
Z	1 psi (0,07 bar) (with RSHC primary cartridge, Pilot-operated, balanced piston sequence valve)
Z	1 psi (0,07 bar) (with RSHC8 primary cartridge, Pilot-operated, balanced piston sequence main stage with integral T-8A control cavity)
F	100 psi (7 bar) (with RSHC8 primary cartridge, Pilot-operated, balanced piston sequence main stage with integral T-8A control cavity)
E	75 psi (5 bar) (with RSHC8 primary cartridge, Pilot-operated, balanced piston sequence main stage with integral T-8A control cavity)
D	50 psi (3,5 bar) (with RSHC8 primary cartridge, Pilot-operated, balanced piston sequence main stage with integral T-8A control cavity)
C	30 psi (2 bar) (with RSHC8 primary cartridge, Pilot-operated, balanced piston sequence main stage with integral T-8A control cavity)
B	15 psi (1 bar) (with RSHC8 primary cartridge, Pilot-operated, balanced piston sequence main stage with integral T-8A control cavity)
A	4 psi (0,3 bar) (with RSHC8 primary cartridge, Pilot-operated, balanced piston sequence main stage with integral T-8A control cavity)

INCLUDED COMPONENTS

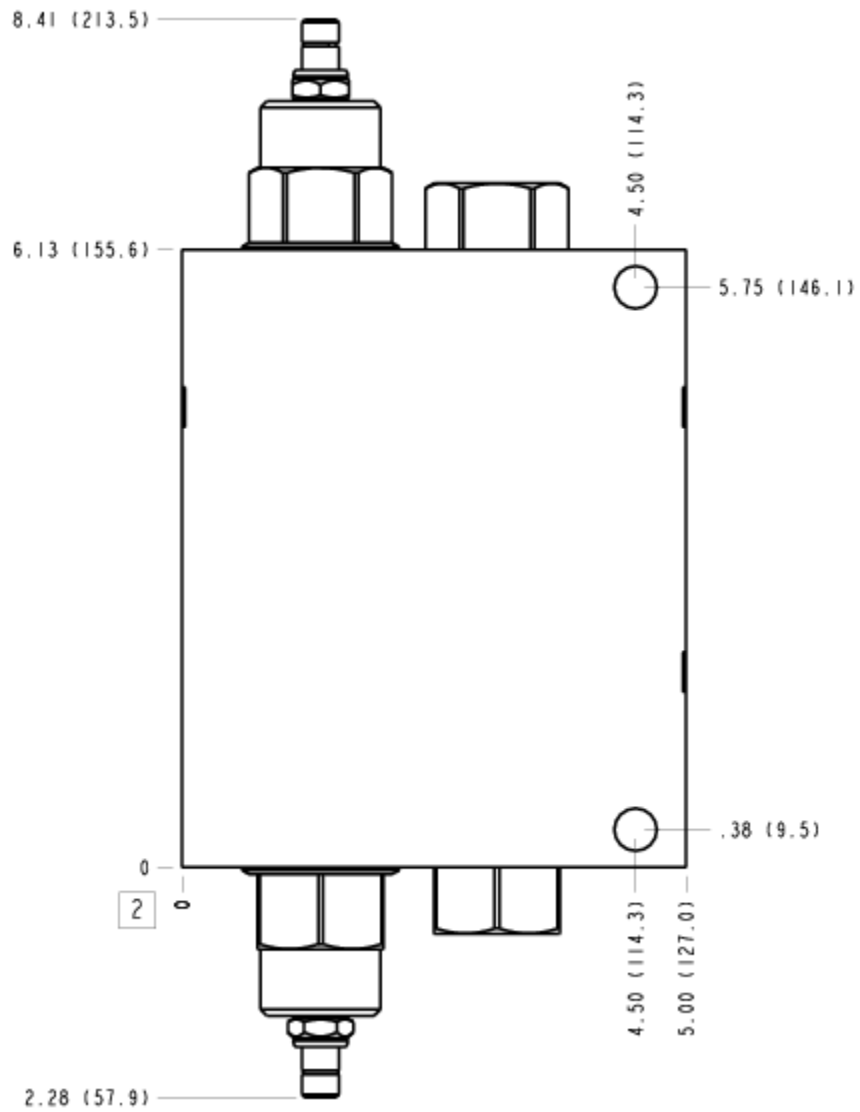
Part	Description	Quantity
CXHAXAN	Cartridge	2
RSHCLAN	Cartridge - Primary	2

MANIFOLD FACES

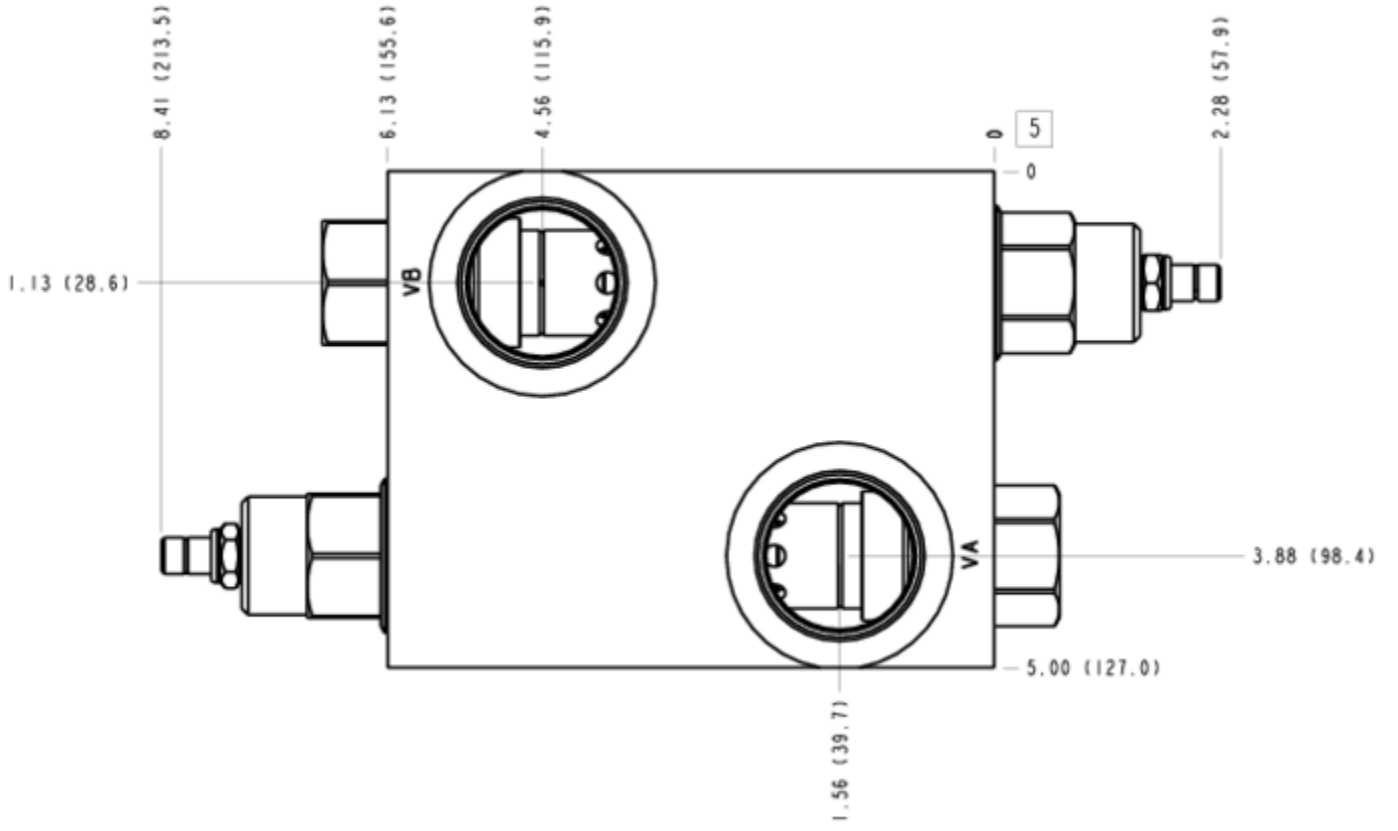
FACE GRID

1	2	3	4
5	6	7	8
9	10	11	12

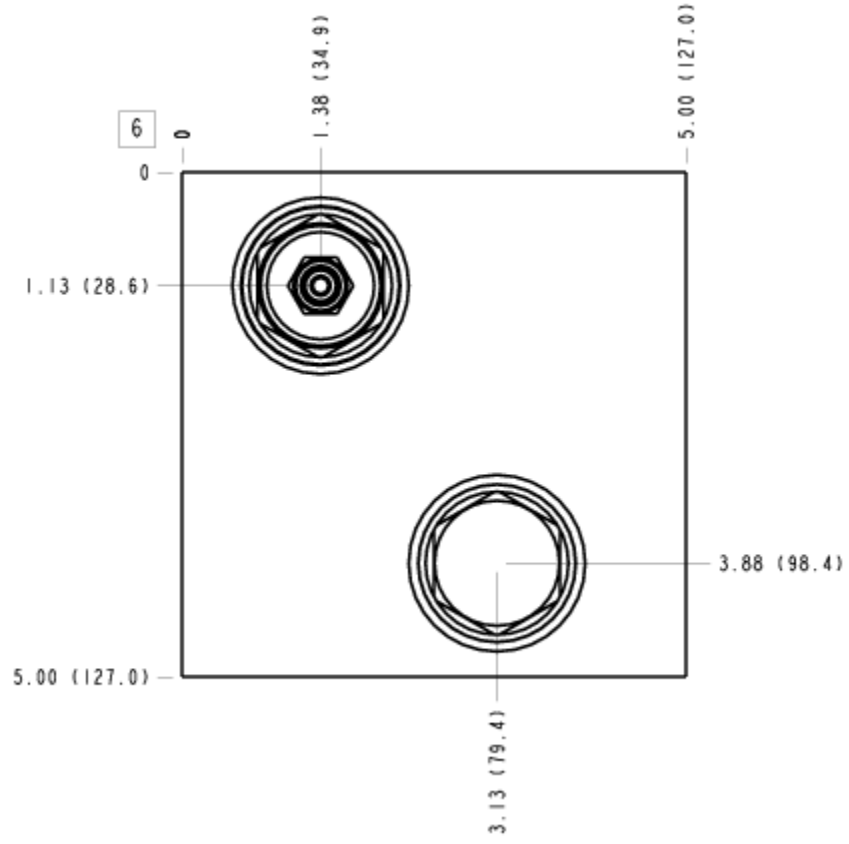
FACE 2



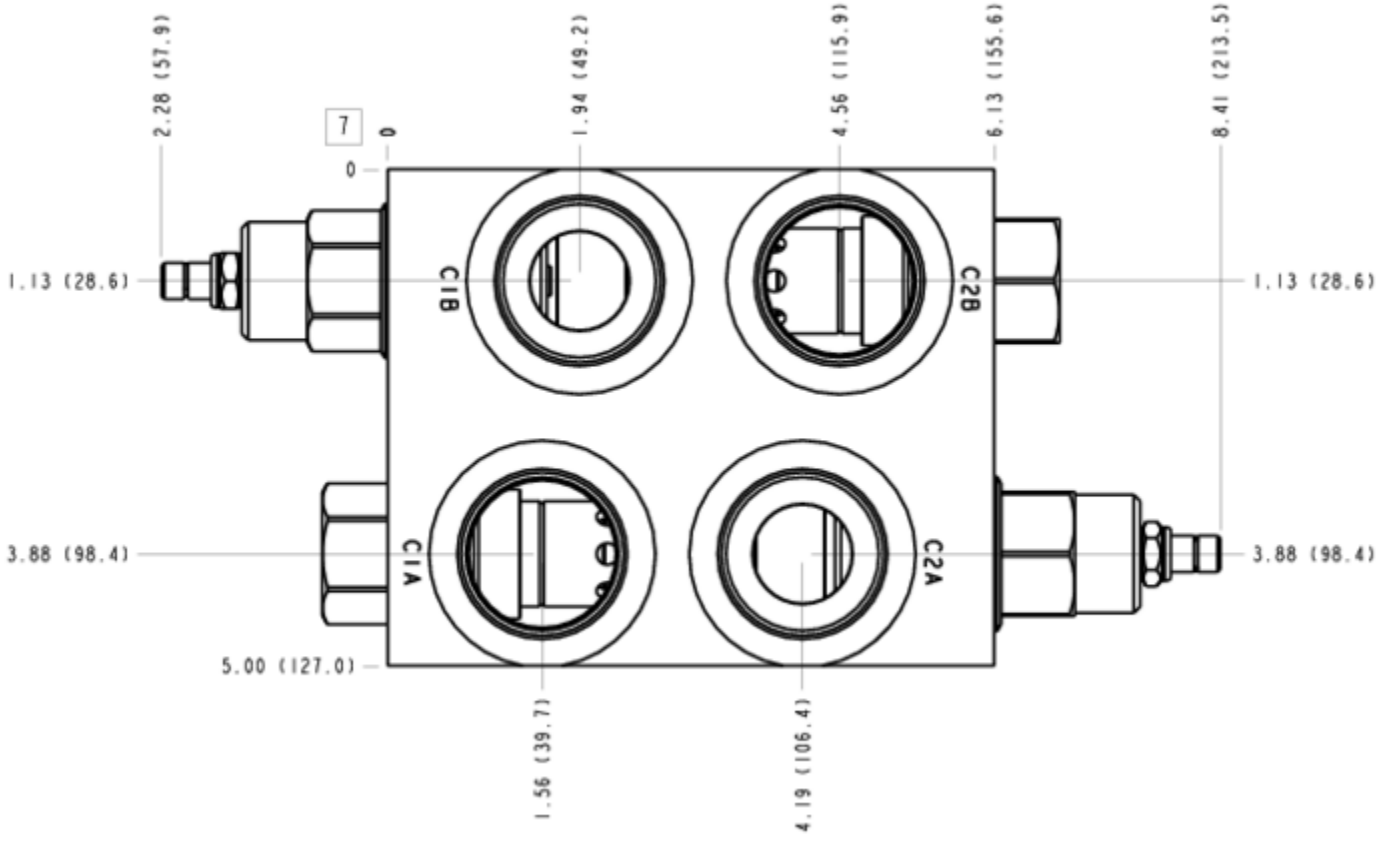
FACE 5



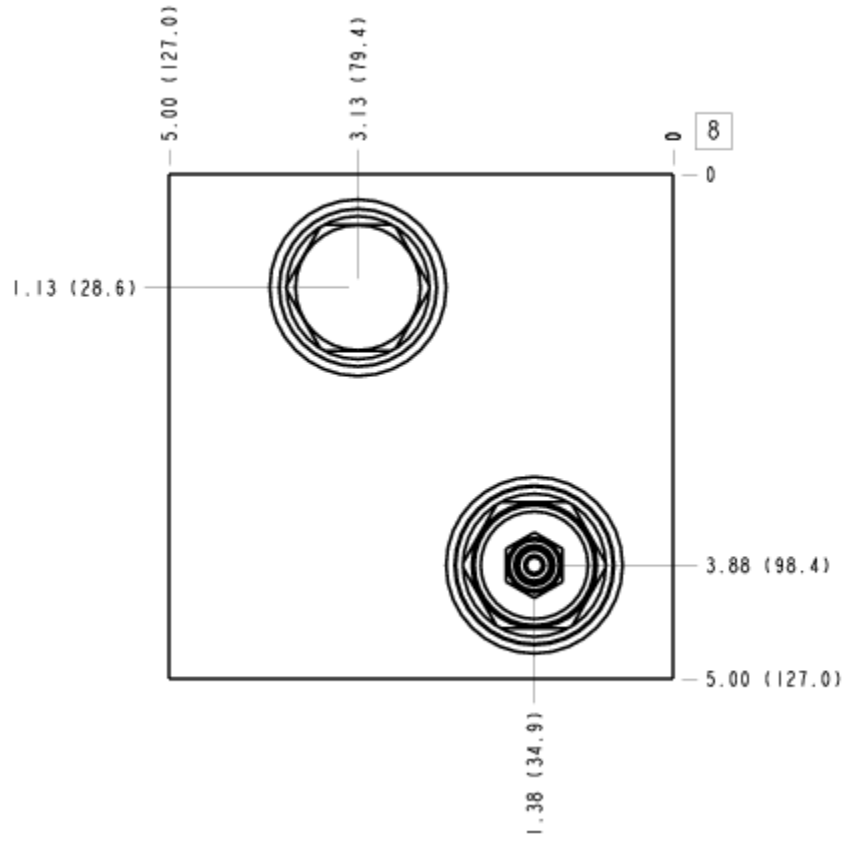
FACE 6



FACE 7



FACE 8



FACE 10

