

**TECHNICAL DATA** NOTE: DATA MAY VARY BY CONFIGURATION. SEE CONFIGURATION SECTION.

	120 L/min.

**OPTION SELECTION EXAMPLE: YVEBLANCL**

(L) (A) (N)

<b>L</b>	<b>A</b>	100 - 3000 psi (7 - 210 bar), 1000 psi (70 bar)	<b>N</b>
<b>C</b>			<b>V</b>
<b>W</b>	<b>B</b>	50 - 1500 psi (3,5 - 105 bar), 1000 psi (70 bar)	
<b>Y</b>	<b>C</b>	150 - 6000 psi (10,5 - 420 bar), 1000 psi (70 bar)	
	<b>D</b>	25 - 800 psi (1,7 - 55 bar), 400 psi (28 bar)	
	<b>E</b>	25 - 400 psi (1,7 - 28 bar), 200 psi (14 bar)	
	<b>N</b>	60 - 800 psi (4 - 55 bar), 400 psi (28 bar)	
	<b>Q</b>	60 - 400 psi (4 - 28 bar), 200 psi (14 bar)	
	<b>W</b>	150 - 4500 psi (10,5 - 315 bar), 1000 psi (70 bar)	

**PRIMARY CARTRIDGE**

(C)

<b>C</b>	30 psi (2 bar) (with RVEA primary cartridge, , pilot-operated, )
<b>A</b>	4 psi (0,3 bar) (with RVEA primary cartridge, , pilot-operated, )
<b>B</b>	15 psi (1 bar) (with RVEA primary cartridge, , pilot-operated, )
<b>D</b>	50 psi (3,5 bar) (with RVEA primary cartridge, , pilot-operated, )
<b>E</b>	75 psi (5 bar) (with RVEA primary cartridge, , pilot-operated, )
<b>F</b>	100 psi (7 bar) (with RVEA primary cartridge, , pilot-operated, )
<b>Z</b>	1 psi (0,07 bar) (with RVEA primary cartridge, , pilot-operated, )

**INCLUDED COMPONENTS**

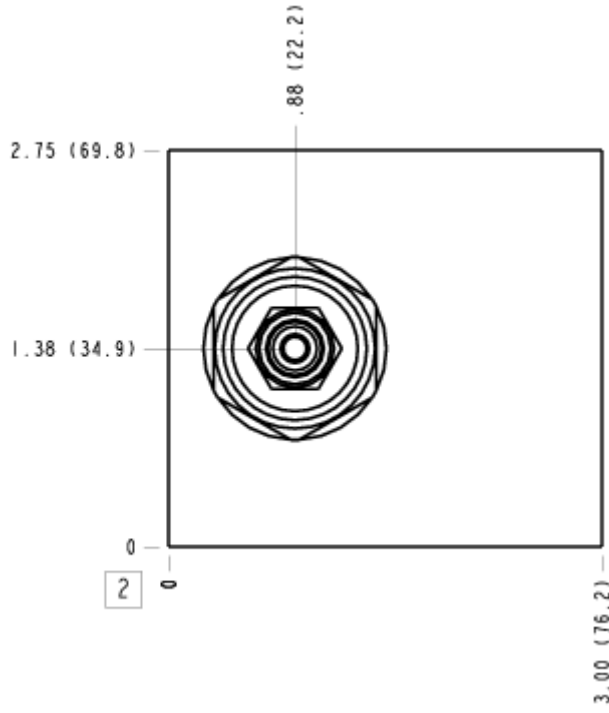
Part	Description	Quantity
CXFAXCN	Cartridge	1
RVEALAN	Cartridge - Primary	1

**MANIFOLD FACES**

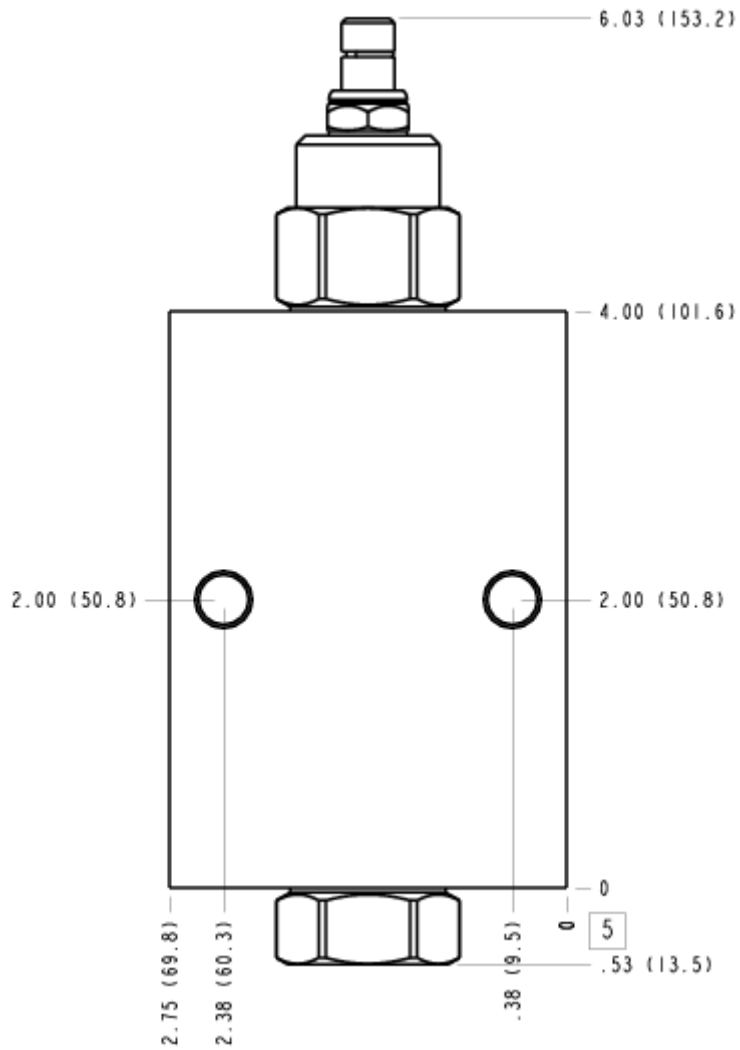
**FACE GRID**

1	2	3	4
5	6	7	8
9	10	11	12

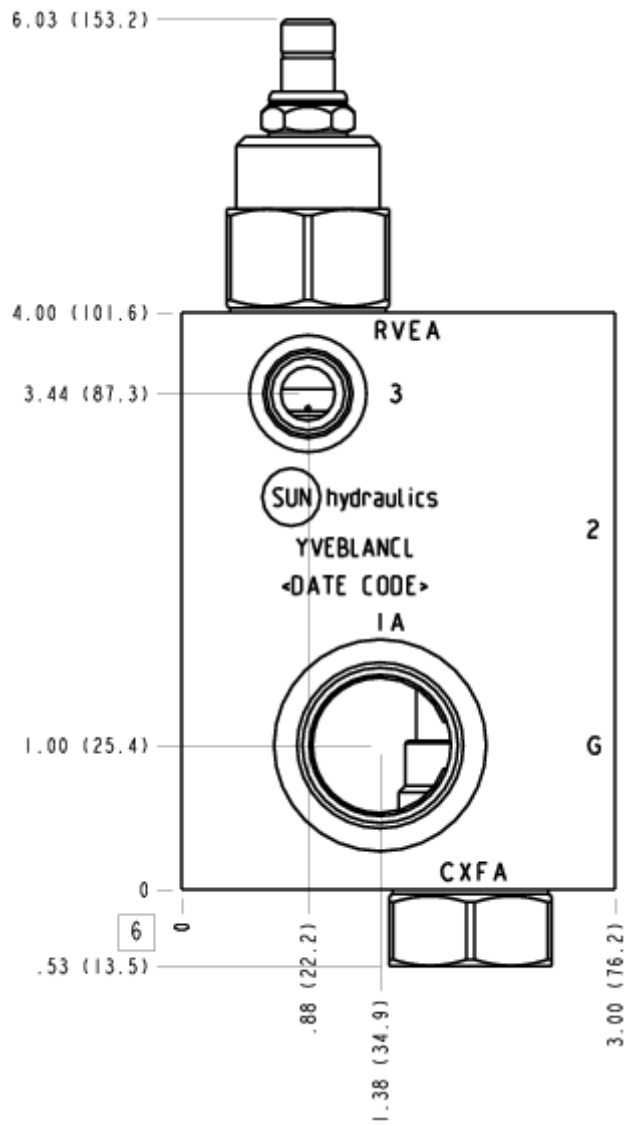
### FACE 2



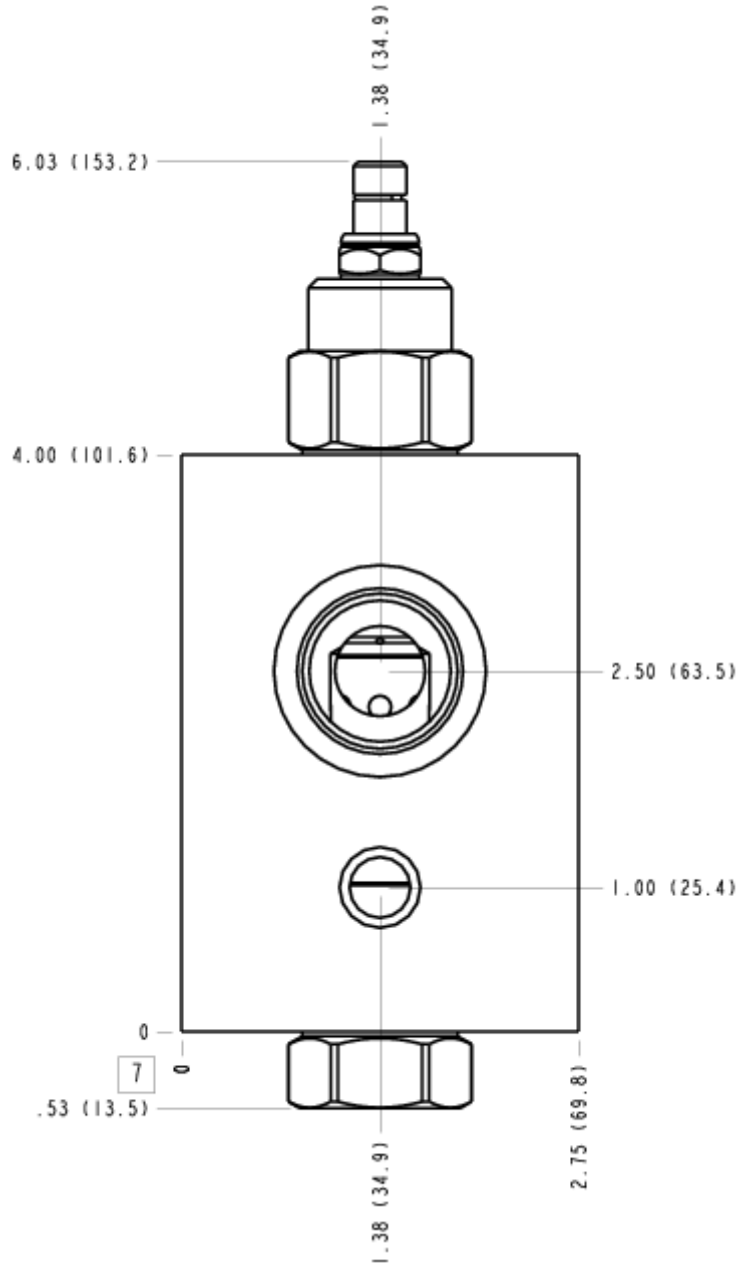
### FACE 5



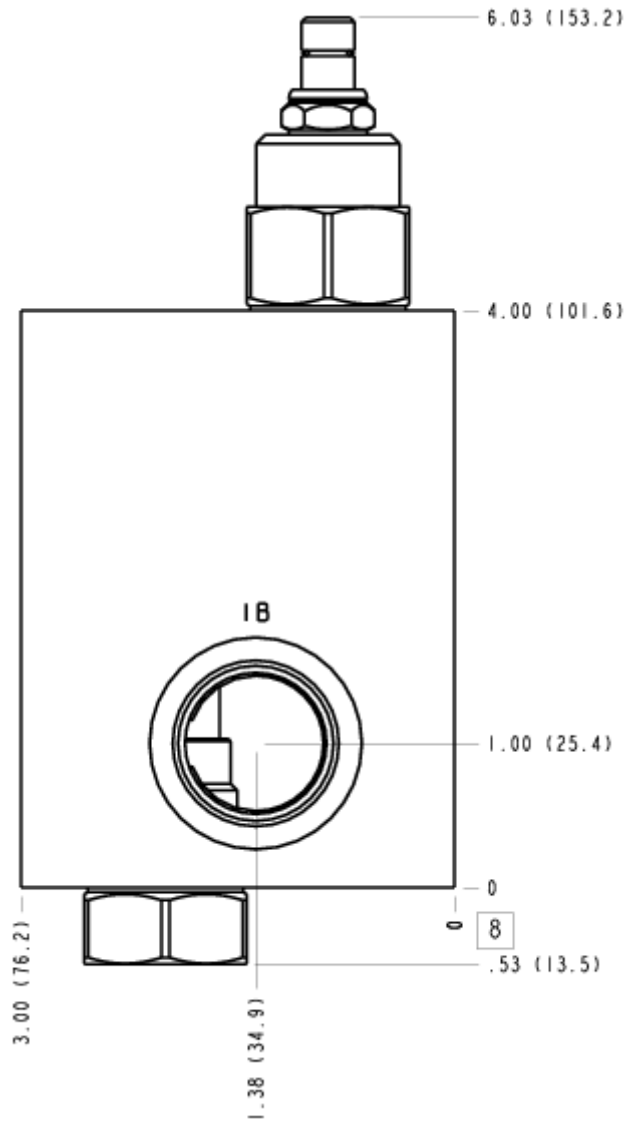
FACE 6



# FACE 7



### FACE 8



### FACE 10

