

TECHNICAL DATA NOTE: DATA MAY VARY BY CONFIGURATION. SEE CONFIGURATION SECTION.

| | |
|------------------------|------------------|
| Body Type | montaje en línea |
| Capacity | 120 L/min. |
| Mounting Hole Diameter | 7,1 mm |
| Mounting Hole Depth | Through |
| Mounting Hole Quantity | 2 |

OPTION SELECTION EXAMPLE: YVELLANCK

| CONTROL | (L) ADJUSTMENT RANGE | (A) SEAL MATERIAL | (N) |
|---|--|-------------------|-----|
| L Standard Screw Adjustment | A 100 - 3000 psi (7 - 210 bar), 1000 psi (70 bar) Standard Setting | N Buna-N | |
| C Tamper Resistant - Factory Set | B 50 - 1500 psi (3,5 - 105 bar), 1000 psi (70 bar) Standard Setting | V Viton | |
| K manilla | D 25 - 800 psi (1,7 - 55 bar), 400 psi (28 bar) Standard Setting | | |
| | E 25 - 400 psi (1,7 - 28 bar), 200 psi (14 bar) Standard Setting | | |
| | J 25 - 1500 psi (1,7 - 105 bar), 1000 psi (70 bar) Standard Setting | | |
| | K 75 - 1500 psi (5 - 105 bar), 1000 psi (70 bar) Standard Setting | | |
| | S 25 - 200 psi (1,7 - 14 bar), 100 psi (7 bar) Standard Setting | | |
| | W 150 - 4500 psi (10,5 - 315 bar), 1000 psi (70 bar) Standard Setting | | |

PRIMARY CARTRIDGE

(C)

| | |
|----------|--|
| C | 30 psi (2 bar) (with RVEA primary cartridge, De venteo, pilot-operated, pistón balanceado alivio válvula) |
| A | 4 psi (0,3 bar) (with RVEA primary cartridge, De venteo, pilot-operated, pistón balanceado alivio válvula) |
| B | 15 psi (1 bar) (with RVEA primary cartridge, De venteo, pilot-operated, pistón balanceado alivio válvula) |
| D | 50 psi (3,5 bar) (with RVEA primary cartridge, De venteo, pilot-operated, pistón balanceado alivio válvula) |
| E | 75 psi (5 bar) (with RVEA primary cartridge, De venteo, pilot-operated, pistón balanceado alivio válvula) |
| F | 100 psi (7 bar) (with RVEA primary cartridge, De venteo, pilot-operated, pistón balanceado alivio válvula) |
| Z | 1 psi (0,07 bar) (with RVEA primary cartridge, De venteo, pilot-operated, pistón balanceado alivio válvula) |

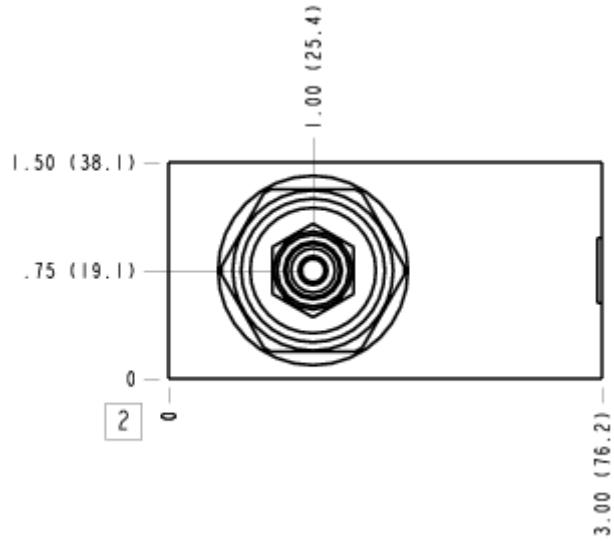
INCLUDED COMPONENTS

| Part | Description | Quantity |
|---------|---------------------|----------|
| CXFAXCN | Cartridge | 1 |
| RVEALAN | Cartridge - Primary | 1 |

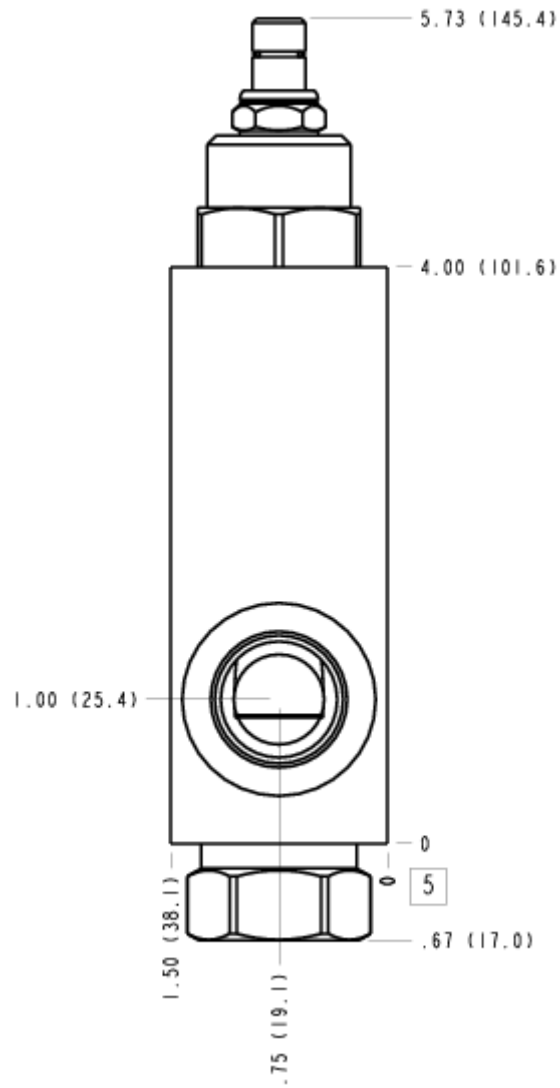
MANIFOLD FACES
FACE GRID

| | | | |
|---|----|----|----|
| 1 | 2 | 3 | 4 |
| 5 | 6 | 7 | 8 |
| 9 | 10 | 11 | 12 |

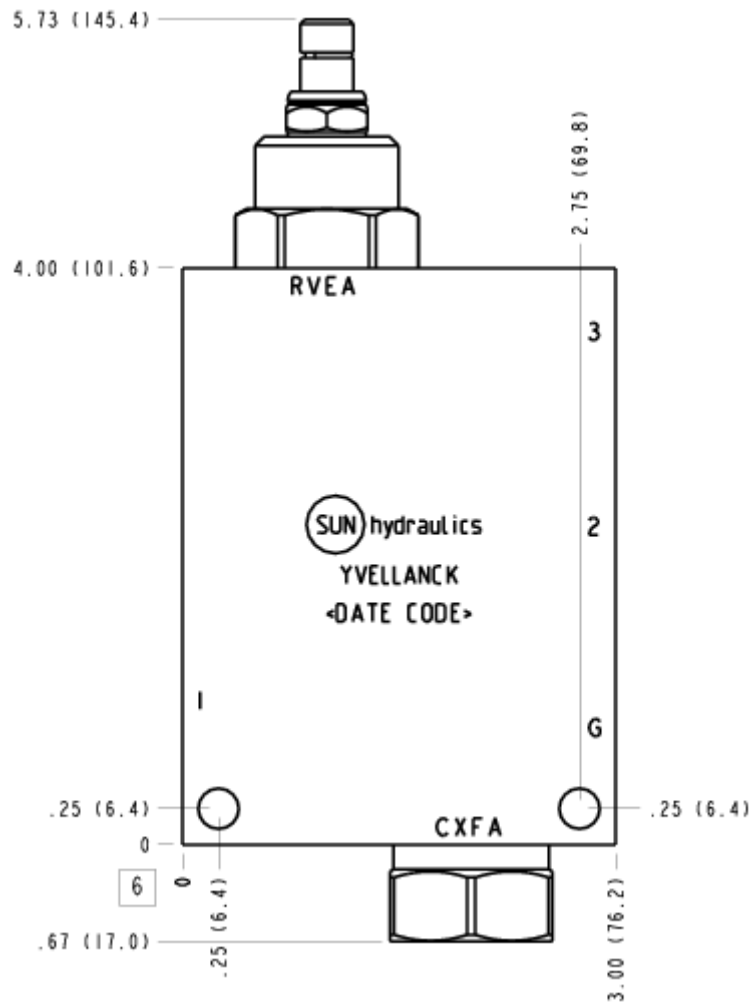
FACE 2



FACE 5



FACE 6



FACE 10

